

## **NSEP1 Antibody (monoclonal) (M01)**

**Mouse monoclonal antibody raised against a partial recombinant YBX1.**

**Catalog # AT3119a**

### **Specification**

---

#### **NSEP1 Antibody (monoclonal) (M01) - Product Information**

Application	IF, WB, E
Primary Accession	<a href="#">P67809</a>
Other Accession	<a href="#">NM_004559</a>
Reactivity	Human
Host	Mouse
Clonality	Monoclonal
Isotype	IgG2a Kappa
Calculated MW	35924

#### **NSEP1 Antibody (monoclonal) (M01) - Additional Information**

**Gene ID** 4904

##### **Other Names**

Nuclease-sensitive element-binding protein 1, CCAAT-binding transcription factor I subunit A, CBF-A, DNA-binding protein B, DBPB, Enhancer factor I subunit A, EFI-A, Y-box transcription factor, Y-box-binding protein 1, YB-1, YBX1, NSEP1, YB1

##### **Target/Specificity**

YBX1 (NP\_004550, 51 a.a. ~ 139 a.a) partial recombinant protein with GST tag. MW of the GST tag alone is 26 KDa.

##### **Dilution**

WB~~1:500~1000

##### **Format**

Clear, colorless solution in phosphate buffered saline, pH 7.2 .

##### **Storage**

Store at -20°C or lower. Aliquot to avoid repeated freezing and thawing.

##### **Precautions**

NSEP1 Antibody (monoclonal) (M01) is for research use only and not for use in diagnostic or therapeutic procedures.

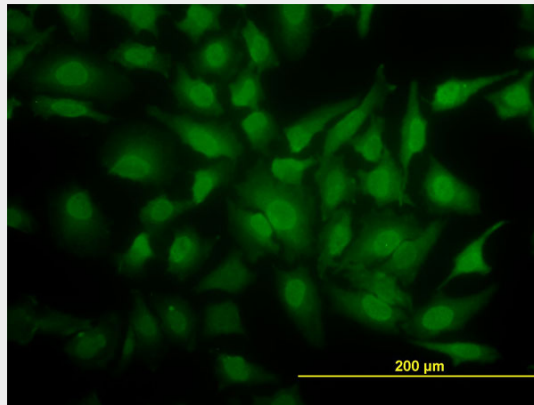
#### **NSEP1 Antibody (monoclonal) (M01) - Protocols**

Provided below are standard protocols that you may find useful for product applications.

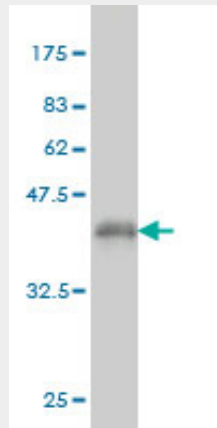
- [Western Blot](#)
- [Blocking Peptides](#)

- [Dot Blot](#)
- [Immunohistochemistry](#)
- [Immunofluorescence](#)
- [Immunoprecipitation](#)
- [Flow Cytometry](#)
- [Cell Culture](#)

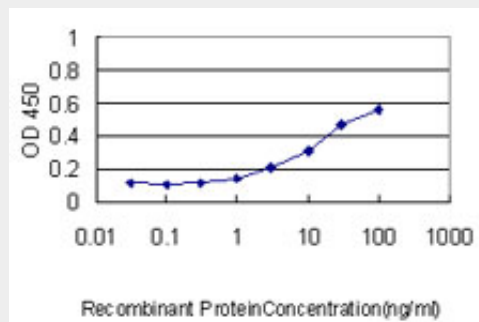
**NSEP1 Antibody (monoclonal) (M01) - Images**



Immunofluorescence of monoclonal antibody to YBX1 on HeLa cell. [antibody concentration 20 ug/ml]



Antibody Reactive Against Recombinant Protein. Western Blot detection against Immunogen (35.53 KDa) .



Detection limit for recombinant GST tagged YBX1 is approximately 0.3ng/ml as a capture antibody.

**NSEP1 Antibody (monoclonal) (M01) - References**

YB-1 alters MT1-MMP trafficking and stimulates MCF-7 breast tumor invasion and metastasis. Lovett DH, et al. *Biochem Biophys Res Commun*, 2010 Jul 30. PMID 20599698. Y-box binding protein-1 is a novel molecular target for tumor vessels. Takahashi M, et al. *Cancer Sci*, 2010 Jun. PMID 20398058. Y-box binding protein-1 induces the expression of CD44 and CD49f leading to enhanced self-renewal, mammosphere growth, and drug resistance. To K, et al. *Cancer Res*, 2010 Apr 1. PMID 20332234. Upregulated c-myc expression in multiple myeloma by internal ribosome entry results from increased interactions with and expression of PTB-1 and YB-1. Cobbold LC, et al. *Oncogene*, 2010 May 13. PMID 20190818. [Effect of YB-1 gene knockdown on human leukemia cell line K562/A02] Xu WL, et al. *Zhonghua Yi Xue Yi Chuan Xue Za Zhi*, 2009 Aug. PMID 20017303.