

## **NPEPL1 Antibody (monoclonal) (M01)**

Mouse monoclonal antibody raised against a full length recombinant NPEPL1.

Catalog # AT3084a

### **Specification**

---

#### **NPEPL1 Antibody (monoclonal) (M01) - Product Information**

Application	IF, WB
Primary Accession	<a href="#">O8NDH3</a>
Other Accession	<a href="#">BC020507</a>
Reactivity	Human
Host	Mouse
Clonality	Monoclonal
Isotype	IgG3 kappa
Calculated MW	55861

#### **NPEPL1 Antibody (monoclonal) (M01) - Additional Information**

**Gene ID** 79716

##### **Other Names**

Probable aminopeptidase NPEPL1, 3411-, Aminopeptidase-like 1, NPEPL1, KIAA1974

##### **Target/Specificity**

NPEPL1 (AAH20507, 1 a.a. ~ 523 a.a) full-length recombinant protein with GST tag. MW of the GST tag alone is 26 KDa.

##### **Dilution**

WB ~ ~ 1:500 ~ 1000

##### **Format**

Clear, colorless solution in phosphate buffered saline, pH 7.2 .

##### **Storage**

Store at -20°C or lower. Aliquot to avoid repeated freezing and thawing.

##### **Precautions**

NPEPL1 Antibody (monoclonal) (M01) is for research use only and not for use in diagnostic or therapeutic procedures.

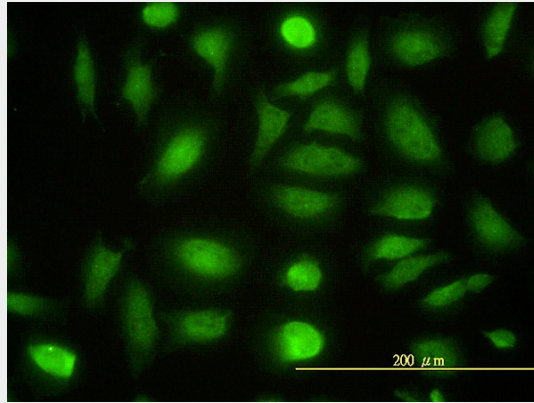
#### **NPEPL1 Antibody (monoclonal) (M01) - Protocols**

Provided below are standard protocols that you may find useful for product applications.

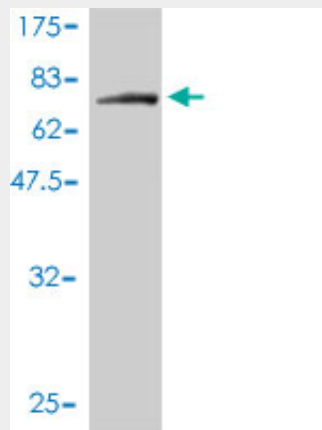
- [Western Blot](#)
- [Blocking Peptides](#)
- [Dot Blot](#)
- [Immunohistochemistry](#)

- [Immunofluorescence](#)
- [Immunoprecipitation](#)
- [Flow Cytometry](#)
- [Cell Culture](#)

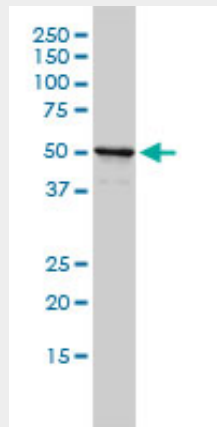
### NPEPL1 Antibody (monoclonal) (M01) - Images



Immunofluorescence of monoclonal antibody to NPEPL1 on HeLa cell. [antibody concentration 10 ug/ml]



Antibody Reactive Against Recombinant Protein. Western Blot detection against Immunogen (83.27 KDa) .



NPEPL1 monoclonal antibody (M01), clone 3F8-1A6 Western Blot analysis of NPEPL1 expression in MCF-7 ( (Cat # AT3084a )

### **NPEPL1 Antibody (monoclonal) (M01) - References**

The status, quality, and expansion of the NIH full-length cDNA project: the Mammalian Gene Collection (MGC). Gerhard DS, et al. *Genome Res*, 2004 Oct. PMID 15489334. Complete sequencing and characterization of 21,243 full-length human cDNAs. Ota T, et al. *Nat Genet*, 2004 Jan. PMID 14702039. Generation and initial analysis of more than 15,000 full-length human and mouse cDNA sequences. Strausberg RL, et al. *Proc Natl Acad Sci U S A*, 2002 Dec 24. PMID 12477932. Prediction of the coding sequences of unidentified human genes. XXII. The complete sequences of 50 new cDNA clones which code for large proteins. Nagase T, et al. *DNA Res*, 2001 Dec 31. PMID 11853319. The DNA sequence and comparative analysis of human chromosome 20. Deloukas P, et al. *Nature*, 2001 Dec 20-27. PMID 11780052.