

## **NOVA1 Antibody (monoclonal) (M10)**

Mouse monoclonal antibody raised against a partial recombinant NOVA1.

Catalog # AT3082a

### **Specification**

---

#### **NOVA1 Antibody (monoclonal) (M10) - Product Information**

Application	WB
Primary Accession	<a href="#">P51513</a>
Other Accession	<a href="#">NM_002515</a>
Reactivity	Human, Rat
Host	mouse
Clonality	Monoclonal
Isotype	IgG1 Kappa
Calculated MW	51727

#### **NOVA1 Antibody (monoclonal) (M10) - Additional Information**

**Gene ID** 4857

##### **Other Names**

RNA-binding protein Nova-1, Neuro-oncological ventral antigen 1, Onconeural ventral antigen 1, Paraneoplastic Ri antigen, Ventral neuron-specific protein 1, NOVA1

##### **Target/Specificity**

NOVA1 (NP\_002506, 408 a.a. ~ 507 a.a) partial recombinant protein with GST tag. MW of the GST tag alone is 26 KDa.

##### **Dilution**

WB~~1:500~1000

##### **Format**

Clear, colorless solution in phosphate buffered saline, pH 7.2 .

##### **Storage**

Store at -20°C or lower. Aliquot to avoid repeated freezing and thawing.

##### **Precautions**

NOVA1 Antibody (monoclonal) (M10) is for research use only and not for use in diagnostic or therapeutic procedures.

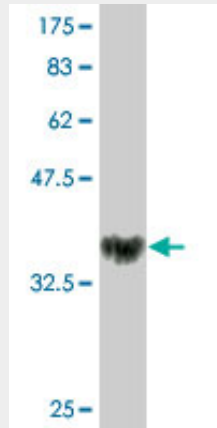
#### **NOVA1 Antibody (monoclonal) (M10) - Protocols**

Provided below are standard protocols that you may find useful for product applications.

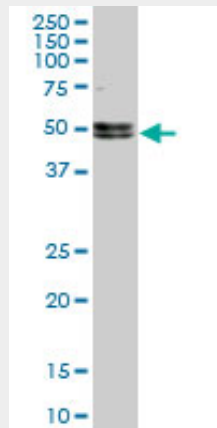
- [Western Blot](#)
- [Blocking Peptides](#)
- [Dot Blot](#)

- [Immunohistochemistry](#)
- [Immunofluorescence](#)
- [Immunoprecipitation](#)
- [Flow Cytometry](#)
- [Cell Culture](#)

### **NOVA1 Antibody (monoclonal) (M10) - Images**



Antibody Reactive Against Recombinant Protein. Western Blot detection against Immunogen (36.52 KDa) .



NOVA1 monoclonal antibody (M10), clone 5D9. Western Blot analysis of NOVA1 expression in PC-12 ( (Cat # AT3082a )

### **NOVA1 Antibody (monoclonal) (M10) - Background**

This gene encodes a neuron-specific RNA-binding protein, a member of the Nova family of paraneoplastic disease antigens, that is recognized and inhibited by paraneoplastic antibodies. These antibodies are found in the sera of patients with paraneoplastic opsoclonus-ataxia, breast cancer, and small cell lung cancer. Alternatively spliced transcripts encoding distinct isoforms have been described.

### **NOVA1 Antibody (monoclonal) (M10) - References**

Genome-wide association study of antipsychotic-induced parkinsonism severity among schizophrenia patients. Alkelai A, et al. *Psychopharmacology (Berl)*, 2009 Oct. PMID 19680635. Genetic variants associated with cardiac structure and function: a meta-analysis and replication of genome-wide association data. Vasan RS, et al. *JAMA*, 2009 Jul 8. PMID

19584346. Conduct disorder and ADHD: evaluation of conduct problems as a categorical and quantitative trait in the international multicentre ADHD genetics study. Anney RJ, et al. *Am J Med Genet B Neuropsychiatr Genet*, 2008 Dec 5. PMID 18951430. Paraneoplastic antibody during follow-up of a patient with anti-Ri-associated paraneoplastic neurological syndrome. Stich O, et al. *Acta Neurol Scand*, 2009 May. PMID 18822086. Post-transcriptional regulation of neuro-oncological ventral antigen 1 by the neuronal RNA-binding proteins ELAV. Ratti A, et al. *J Biol Chem*, 2008 Mar 21. PMID 18218628.