

NOLC1 Antibody (monoclonal) (M02)

Mouse monoclonal antibody raised against a partial recombinant NOLC1.

Catalog # AT3077a

Specification

NOLC1 Antibody (monoclonal) (M02) - Product Information

| | |
|-------------------|---------------------------|
| Application | WB, IHC, E |
| Primary Accession | Q14978 |
| Other Accession | NM_004741 |
| Reactivity | Human |
| Host | mouse |
| Clonality | Monoclonal |
| Isotype | IgG3 Kappa |
| Calculated MW | 73603 |

NOLC1 Antibody (monoclonal) (M02) - Additional Information

Gene ID 9221

Other Names

Nucleolar and coiled-body phosphoprotein 1, 140 kDa nucleolar phosphoprotein, Nopp140, Hepatitis C virus NS5A-transactivated protein 13, HCV NS5A-transactivated protein 13, Nucleolar 130 kDa protein, Nucleolar phosphoprotein p130, NOLC1, KIAA0035, NS5ATP13

Target/Specificity

NOLC1 (NP_004732, 590 a.a. ~ 699 a.a) partial recombinant protein with GST tag. MW of the GST tag alone is 26 kDa.

Dilution

WB~~1:500~1000

Format

Clear, colorless solution in phosphate buffered saline, pH 7.2 .

Storage

Store at -20°C or lower. Aliquot to avoid repeated freezing and thawing.

Precautions

NOLC1 Antibody (monoclonal) (M02) is for research use only and not for use in diagnostic or therapeutic procedures.

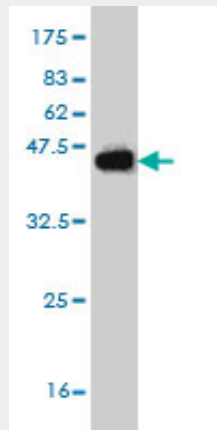
NOLC1 Antibody (monoclonal) (M02) - Protocols

Provided below are standard protocols that you may find useful for product applications.

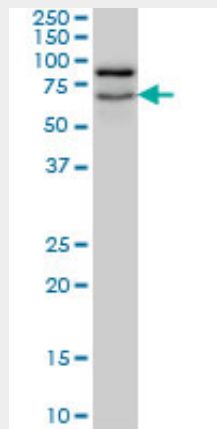
- [Western Blot](#)
- [Blocking Peptides](#)

- [Dot Blot](#)
- [Immunohistochemistry](#)
- [Immunofluorescence](#)
- [Immunoprecipitation](#)
- [Flow Cytometry](#)
- [Cell Culture](#)

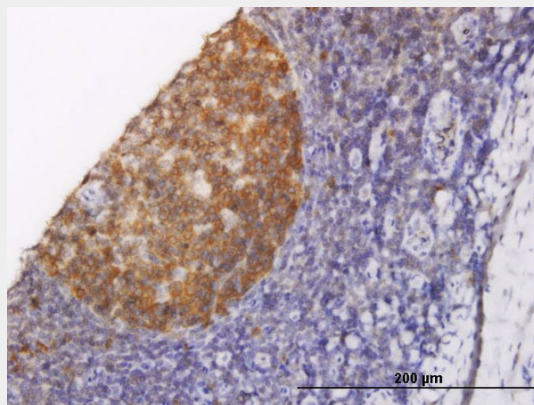
NOLC1 Antibody (monoclonal) (M02) - Images



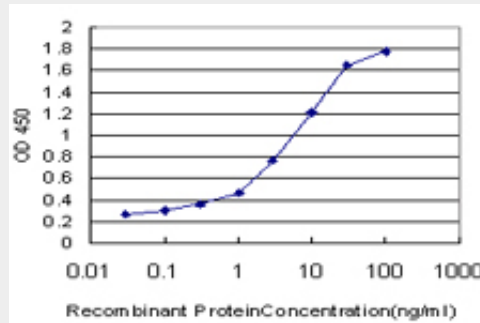
Antibody Reactive Against Recombinant Protein. Western Blot detection against Immunogen (37.84 KDa) .



NOLC1 monoclonal antibody (M02), clone 6B4 Western Blot analysis of NOLC1 expression in HepG2 ((Cat # AT3077a)



Immunoperoxidase of monoclonal antibody to NOLC1 on formalin-fixed paraffin-embedded human tonsil. [antibody concentration 1.5 ug/ml]



Detection limit for recombinant GST tagged NOLC1 is approximately 0.03ng/ml as a capture antibody.

NOLC1 Antibody (monoclonal) (M02) - References

NOLC1, an enhancer of nasopharyngeal carcinoma progression, is essential for TP53 to regulate MDM2 expression. Hwang YC, et al. *Am J Pathol*, 2009 Jul. PMID 19541936. Localization of Nopp140 within mammalian cells during interphase and mitosis. Thiry M, et al. *Histochem Cell Biol*, 2009 Aug. PMID 19381672. The loss of the snoRNP chaperone Nopp140 from Cajal bodies of patient fibroblasts correlates with the severity of spinal muscular atrophy. Renvois B, et al. *Hum Mol Genet*, 2009 Apr 1. PMID 19129172. Characterization of the InsP6-dependent interaction between CK2 and Nopp140. Lee WK, et al. *Biochem Biophys Res Commun*, 2008 Nov 14. PMID 18790693. Chromatin tethering effects of hNopp140 are involved in the spatial organization of nucleolus and the rRNA gene transcription. Tsai YT, et al. *J Biomed Sci*, 2008 Jul. PMID 18253863.