

## **NOLC1 Antibody (monoclonal) (M01)**

Mouse monoclonal antibody raised against a partial recombinant NOLC1.

Catalog # AT3076a

### **Specification**

---

#### **NOLC1 Antibody (monoclonal) (M01) - Product Information**

Application	WB, E
Primary Accession	<a href="#">O14978</a>
Other Accession	<a href="#">NM_004741</a>
Reactivity	Human
Host	mouse
Clonality	Monoclonal
Isotype	IgG3 Kappa
Calculated MW	73603

#### **NOLC1 Antibody (monoclonal) (M01) - Additional Information**

**Gene ID** 9221

##### **Other Names**

Nucleolar and coiled-body phosphoprotein 1, 140 kDa nucleolar phosphoprotein, Nopp140, Hepatitis C virus NS5A-transactivated protein 13, HCV NS5A-transactivated protein 13, Nucleolar 130 kDa protein, Nucleolar phosphoprotein p130, NOLC1, KIAA0035, NS5ATP13

##### **Target/Specificity**

NOLC1 (NP\_004732, 590 a.a. ~ 699 a.a) partial recombinant protein with GST tag. MW of the GST tag alone is 26 kDa.

##### **Dilution**

WB~~1:500~1000

##### **Format**

Clear, colorless solution in phosphate buffered saline, pH 7.2 .

##### **Storage**

Store at -20°C or lower. Aliquot to avoid repeated freezing and thawing.

##### **Precautions**

NOLC1 Antibody (monoclonal) (M01) is for research use only and not for use in diagnostic or therapeutic procedures.

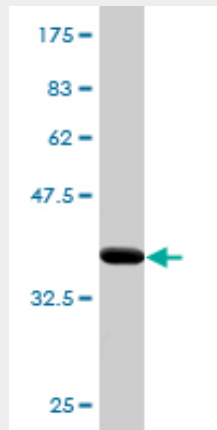
#### **NOLC1 Antibody (monoclonal) (M01) - Protocols**

Provided below are standard protocols that you may find useful for product applications.

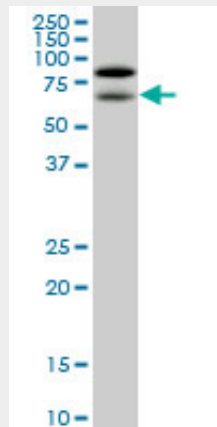
- [Western Blot](#)
- [Blocking Peptides](#)

- [Dot Blot](#)
- [Immunohistochemistry](#)
- [Immunofluorescence](#)
- [Immunoprecipitation](#)
- [Flow Cytometry](#)
- [Cell Culture](#)

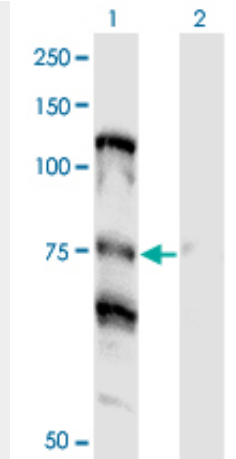
### **NOLC1 Antibody (monoclonal) (M01) - Images**



Antibody Reactive Against Recombinant Protein. Western Blot detection against Immunogen (37.84 KDa) .

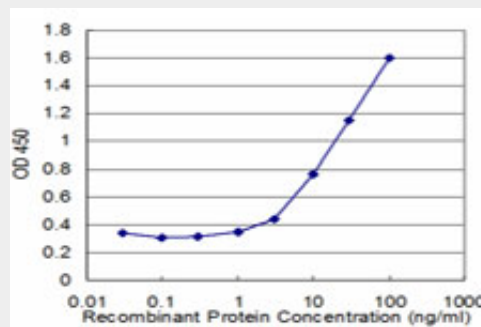


NOLC1 monoclonal antibody (M01), clone 3F8. Western Blot analysis of NOLC1 expression in HepG2 ( (Cat # AT3076a )



Western Blot analysis of NOLC1 expression in transfected 293T cell line by NOLC1 monoclonal antibody (M01), clone 3F8.

Lane 1: NOLC1 transfected lysate (Predicted MW: 73.7 KDa).  
Lane 2: Non-transfected lysate.



Detection limit for recombinant GST tagged NOLC1 is approximately 1ng/ml as a capture antibody.

### **NOLC1 Antibody (monoclonal) (M01) - References**

NOLC1, an enhancer of nasopharyngeal carcinoma progression, is essential for TP53 to regulate MDM2 expression. Hwang YC, et al. *Am J Pathol*, 2009 Jul. PMID 19541936. Localization of Nopp140 within mammalian cells during interphase and mitosis. Thiry M, et al. *Histochem Cell Biol*, 2009 Aug. PMID 19381672. The loss of the snoRNP chaperone Nopp140 from Cajal bodies of patient fibroblasts correlates with the severity of spinal muscular atrophy. Renvois? B, et al. *Hum Mol Genet*, 2009 Apr 1. PMID 19129172. Characterization of the InsP6-dependent interaction between CK2 and Nopp140. Lee WK, et al. *Biochem Biophys Res Commun*, 2008 Nov 14. PMID 18790693. Chromatin tethering effects of hNopp140 are involved in the spatial organization of nucleolus and the rRNA gene transcription. Tsai YT, et al. *J Biomed Sci*, 2008 Jul. PMID 18253863.