

**NODAL Antibody (monoclonal) (M03)**

Mouse monoclonal antibody raised against a partial recombinant NODAL.

Catalog # AT3074a

**Specification**

---

**NODAL Antibody (monoclonal) (M03) - Product Information**

Application	IF, WB, IHC, E
Primary Accession	<a href="#">O96S42</a>
Other Accession	<a href="#">NM_018055</a>
Reactivity	Human, Mouse, Rat
Host	mouse
Clonality	Monoclonal
Isotype	IgG1 Kappa
Calculated MW	39561

**NODAL Antibody (monoclonal) (M03) - Additional Information****Gene ID** 4838**Other Names**

Nodal homolog, NODAL

**Target/Specificity**

NODAL (NP\_060525, 275 a.a. ~ 346 a.a) partial recombinant protein with GST tag. MW of the GST tag alone is 26 KDa.

**Dilution**

WB~~1:500~1000

**Format**

Clear, colorless solution in phosphate buffered saline, pH 7.2 .

**Storage**

Store at -20°C or lower. Aliquot to avoid repeated freezing and thawing.

**Precautions**

NODAL Antibody (monoclonal) (M03) is for research use only and not for use in diagnostic or therapeutic procedures.

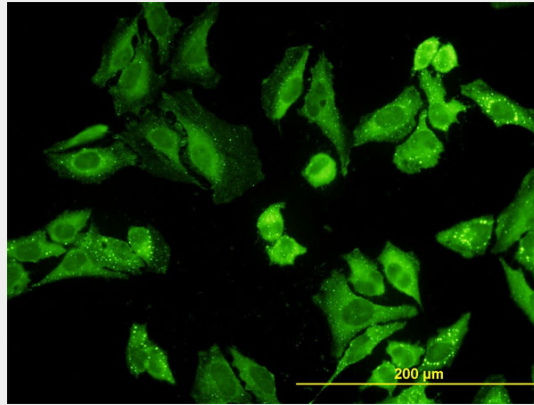
**NODAL Antibody (monoclonal) (M03) - Protocols**

Provided below are standard protocols that you may find useful for product applications.

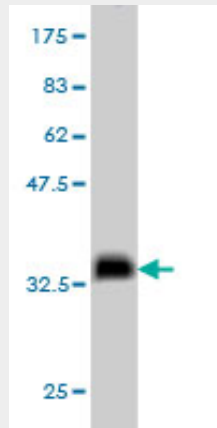
- [Western Blot](#)
- [Blocking Peptides](#)
- [Dot Blot](#)
- [Immunohistochemistry](#)

- [Immunofluorescence](#)
- [Immunoprecipitation](#)
- [Flow Cytometry](#)
- [Cell Culture](#)

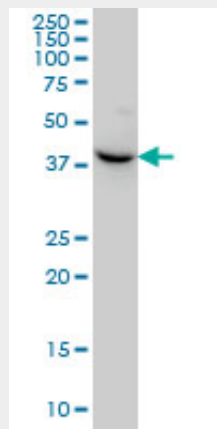
### NODAL Antibody (monoclonal) (M03) - Images



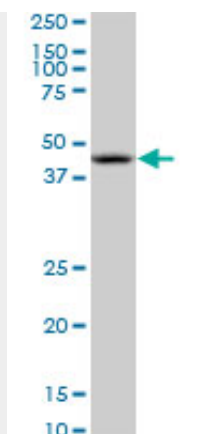
Immunofluorescence of monoclonal antibody to NODAL on HeLa cell. [antibody concentration 10 ug/ml]



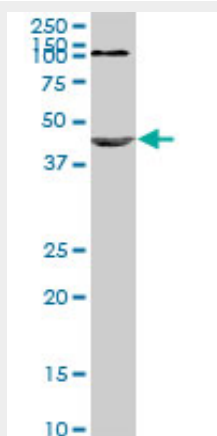
Antibody Reactive Against Recombinant Protein. Western Blot detection against Immunogen (33.66 KDa) .



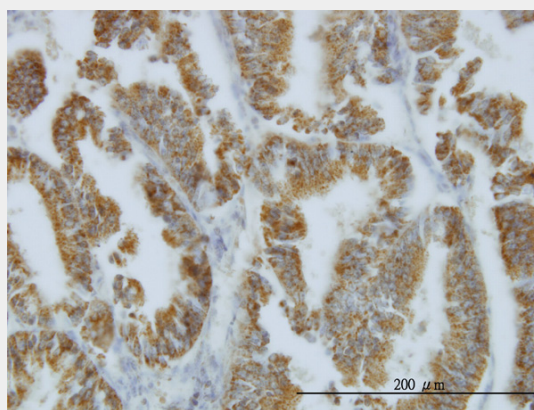
NODAL monoclonal antibody (M03), clone 5C3 Western Blot analysis of NODAL expression in HeLa ( (Cat # AT3074a )



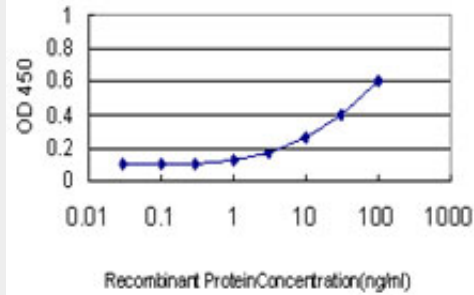
NODAL monoclonal antibody (M03), clone 5C3. Western Blot analysis of NODAL expression in PC-12 ( (Cat # AT3074a )



NODAL monoclonal antibody (M03), clone 5C3. Western Blot analysis of NODAL expression in Raw 264.7 ( (Cat # AT3074a )



Immunoperoxidase of monoclonal antibody to NODAL on formalin-fixed paraffin-embedded human endometrium cancer. [antibody concentration 3 ug/ml]



Detection limit for recombinant GST tagged NODAL is approximately 0.3ng/ml as a capture antibody.

### **NODAL Antibody (monoclonal) (M03) - Background**

The protein encoded by this gene is a member of the TGF-beta superfamily. Studies of the mouse counterpart suggested that this gene may be essential for mesoderm formation and subsequent organization of axial structures in early embryonic development.

### **NODAL Antibody (monoclonal) (M03) - References**

1.Reactivation of embryonic nodal signaling is associated with tumor progression and promotes the growth of prostate cancer cells.Lawrence MG, Margaryan NV, Loessner D, Collins A, Kerr KM, Turner M, Seftor EA, Stephens CR, Lai J, Postovit LM, Clements JA, Hendrix MJ; APC BioResource.Prostate. 2011 Jan 12. [Epub ahead of print]