

NME2 Antibody (monoclonal) (M06)**Mouse monoclonal antibody raised against a partial recombinant NME2.****Catalog # AT3066a****Specification**

NME2 Antibody (monoclonal) (M06) - Product Information

Application	IF, WB, IHC, E
Primary Accession	P22392
Other Accession	NM_002512
Reactivity	Human, Mouse, Rat
Host	mouse
Clonality	Monoclonal
Isotype	IgG3 Kappa
Calculated MW	17298

NME2 Antibody (monoclonal) (M06) - Additional Information**Gene ID** 4831;654364**Other Names**

Nucleoside diphosphate kinase B, NDK B, NDP kinase B, C-myc purine-binding transcription factor PUF, Histidine protein kinase NDKB, nm23-H2, NME2, NM23B

Target/Specificity

NME2 (NP_002503, 51 a.a. ~ 152 a.a) partial recombinant protein with GST tag. MW of the GST tag alone is 26 KDa.

Dilution

WB~~1:500~1000

Format

Clear, colorless solution in phosphate buffered saline, pH 7.2 .

Storage

Store at -20°C or lower. Aliquot to avoid repeated freezing and thawing.

Precautions

NME2 Antibody (monoclonal) (M06) is for research use only and not for use in diagnostic or therapeutic procedures.

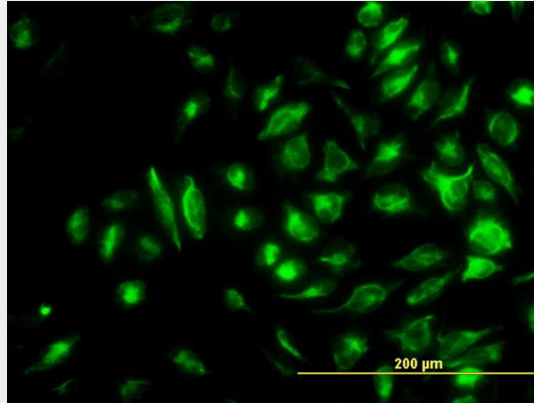
NME2 Antibody (monoclonal) (M06) - Protocols

Provided below are standard protocols that you may find useful for product applications.

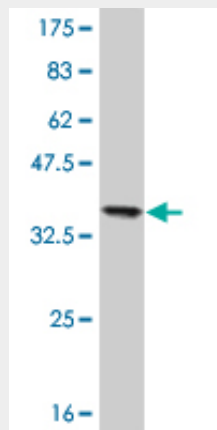
- [Western Blot](#)
- [Blocking Peptides](#)
- [Dot Blot](#)

- [Immunohistochemistry](#)
- [Immunofluorescence](#)
- [Immunoprecipitation](#)
- [Flow Cytometry](#)
- [Cell Culture](#)

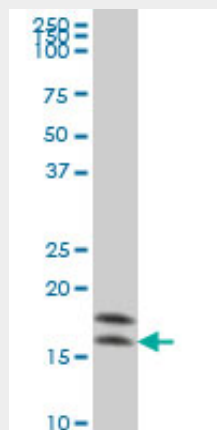
NME2 Antibody (monoclonal) (M06) - Images



Immunofluorescence of monoclonal antibody to NME2 on HeLa cell. [antibody concentration 10 ug/ml]

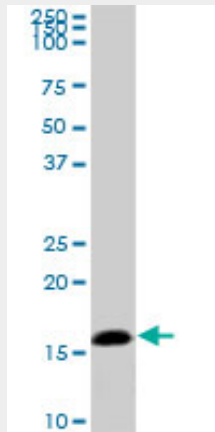


Antibody Reactive Against Recombinant Protein. Western Blot detection against Immunogen (36.96 KDa) .

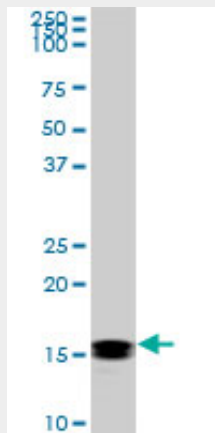


NME2 monoclonal antibody (M06), clone 1D3 Western Blot analysis of NME2 expression in HeLa (

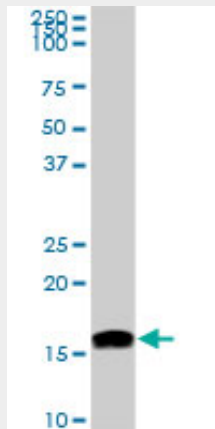
(Cat # AT3066a)



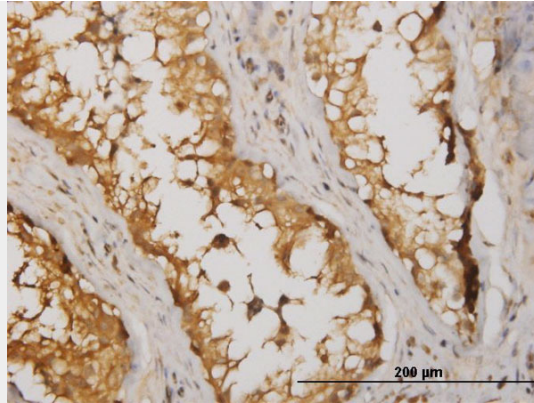
NME2 monoclonal antibody (M06), clone 1D3. Western Blot analysis of NME2 expression in PC-12
((Cat # AT3066a)



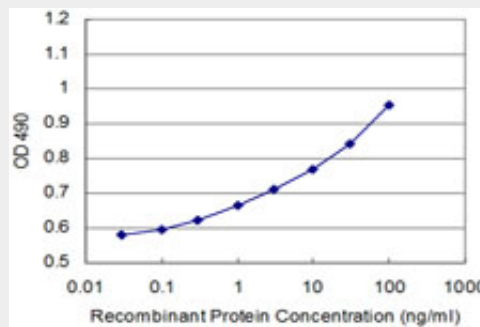
NME2 monoclonal antibody (M06), clone 1D3. Western Blot analysis of NME2 expression in Raw
264.7 ((Cat # AT3066a)



NME2 monoclonal antibody (M06), clone 1D3. Western Blot analysis of NME2 expression in
NIH/3T3 ((Cat # AT3066a)



Immunoperoxidase of monoclonal antibody to NME2 on formalin-fixed paraffin-embedded human testis. [antibody concentration 1.5 ug/ml]



Detection limit for recombinant GST tagged NME2 is 0.3 ng/ml as a capture antibody.

NME2 Antibody (monoclonal) (M06) - Background

Nucleoside diphosphate kinase (NDK) exists as a hexamer composed of 'A' (encoded by NME1) and 'B' (encoded by this gene) isoforms. Multiple alternatively spliced transcript variants encoding the same isoform have been found for this gene. Co-transcription of this gene and the neighboring upstream gene (NME1) generates naturally-occurring transcripts (NME1-NME2) which encode a fusion protein comprised of sequence sharing identity with each individual gene product.

NME2 Antibody (monoclonal) (M06) - References

1. Early Insights into the Function of KIAA1199, a Markedly Overexpressed Protein in Human Colorectal Tumors. Tiwari A, Schneider M, Fiorino A, Haider R, Okoniewski MJ, Roschitzki B, Uzozie A, Menigatti M, Jiricny J, Marra G. PLoS One. 2013 Jul 23;8(7):e69473