

NEFH Antibody (monoclonal) (M01)

Mouse monoclonal antibody raised against a partial recombinant NEFH.

Catalog # AT3010a

Specification

NEFH Antibody (monoclonal) (M01) - Product Information

| | |
|-------------------|---------------------------|
| Application | WB, E |
| Primary Accession | P12036 |
| Other Accession | NM_021076 |
| Reactivity | Human |
| Host | mouse |
| Clonality | Monoclonal |
| Isotype | IgG2a Kappa |
| Calculated MW | 111838 |

NEFH Antibody (monoclonal) (M01) - Additional Information**Gene ID** 4744**Other Names**

Neurofilament heavy polypeptide, NF-H, 200 kDa neurofilament protein, Neurofilament triplet H protein, NEFH, KIAA0845, NFH

Target/Specificity

NEFH (NP_066554, 263 a.a. ~ 363 a.a) partial recombinant protein with GST tag. MW of the GST tag alone is 26 kDa.

Dilution

WB~~1:500~1000

Format

Clear, colorless solution in phosphate buffered saline, pH 7.2 .

Storage

Store at -20°C or lower. Aliquot to avoid repeated freezing and thawing.

Precautions

NEFH Antibody (monoclonal) (M01) is for research use only and not for use in diagnostic or therapeutic procedures.

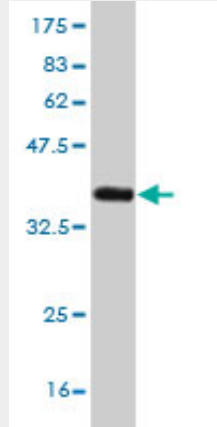
NEFH Antibody (monoclonal) (M01) - Protocols

Provided below are standard protocols that you may find useful for product applications.

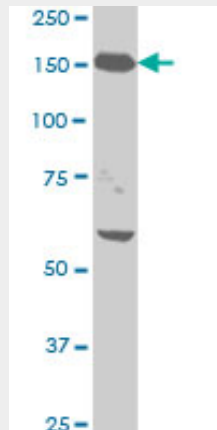
- [Western Blot](#)
- [Blocking Peptides](#)
- [Dot Blot](#)

- [Immunohistochemistry](#)
- [Immunofluorescence](#)
- [Immunoprecipitation](#)
- [Flow Cytometry](#)
- [Cell Culture](#)

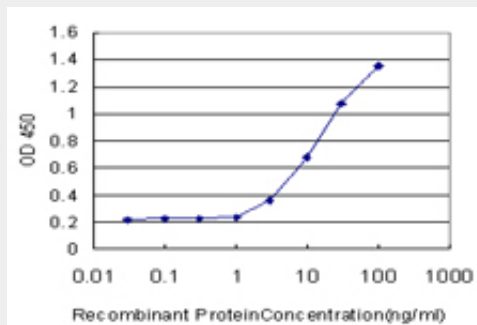
NEFH Antibody (monoclonal) (M01) - Images



Antibody Reactive Against Recombinant Protein. Western Blot detection against Immunogen (36.85 KDa) .



NEFH monoclonal antibody (M01), clone 2E8 Western Blot analysis of NEFH expression in HeLa (Cat # AT3010a)



Detection limit for recombinant GST tagged NEFH is approximately 0.03ng/ml as a capture antibody.

NEFH Antibody (monoclonal) (M01) - Background

Neurofilaments are type IV intermediate filament heteropolymers composed of light, medium, and heavy chains. Neurofilaments comprise the axoskeleton and functionally maintain neuronal caliber. They may also play a role in intracellular transport to axons and dendrites. This gene encodes the heavy neurofilament protein. This protein is commonly used as a biomarker of neuronal damage and susceptibility to amyotrophic lateral sclerosis (ALS) has been associated with mutations in this gene.

NEFH Antibody (monoclonal) (M01) - References

A genome-wide association study of carotid atherosclerosis in HIV-infected men. Shrestha S, et al. AIDS, 2010 Feb 20. PMID 20009918. Comparative study of CSF neurofilaments in HTLV-1-associated myelopathy/tropical spastic paraparesis and other neurological disorders. Alberti C, et al. AIDS Res Hum Retroviruses, 2009 Aug. PMID 19678766. Phosphorylated neurofilament heavy chain is a marker of neurodegeneration in Leber hereditary optic neuropathy (LHON). Guy J, et al. Mol Vis, 2008. PMID 19104679. Polymorphisms in genes involved in neurodevelopment may be associated with altered brain morphology in schizophrenia: preliminary evidence. Gregorio SP, et al. Psychiatry Res, 2009 Jan 30. PMID 19054571. Pin1-dependent prolyl isomerization modulates the stress-induced phosphorylation of high molecular weight neurofilament protein. Rudrabhatla P, et al. J Biol Chem, 2008 Sep 26. PMID 18635547.