

## **NDUFB5 Antibody (monoclonal) (M01)**

Mouse monoclonal antibody raised against a partial recombinant NDUFB5.

Catalog # AT3004a

### **Specification**

---

#### **NDUFB5 Antibody (monoclonal) (M01) - Product Information**

Application	WB
Primary Accession	<a href="#">O43674</a>
Other Accession	<a href="#">NM_002492</a>
Reactivity	Human
Host	mouse
Clonality	Monoclonal
Isotype	IgG1 Kappa
Calculated MW	21750

#### **NDUFB5 Antibody (monoclonal) (M01) - Additional Information**

**Gene ID** 4711

##### **Other Names**

NADH dehydrogenase [ubiquinone] 1 beta subcomplex subunit 5, mitochondrial, Complex I-SGDH, CI-SGDH, NADH-ubiquinone oxidoreductase SGDH subunit, NDUFB5

##### **Target/Specificity**

NDUFB5 (NP\_002483, 95 a.a. ~ 189 a.a) partial recombinant protein with GST tag. MW of the GST tag alone is 26 KDa.

##### **Dilution**

WB~~1:500~1000

##### **Format**

Clear, colorless solution in phosphate buffered saline, pH 7.2 .

##### **Storage**

Store at -20°C or lower. Aliquot to avoid repeated freezing and thawing.

##### **Precautions**

NDUFB5 Antibody (monoclonal) (M01) is for research use only and not for use in diagnostic or therapeutic procedures.

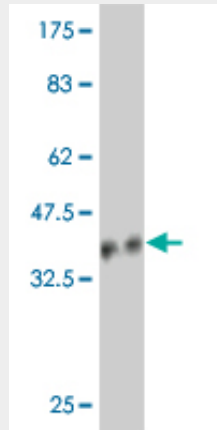
#### **NDUFB5 Antibody (monoclonal) (M01) - Protocols**

Provided below are standard protocols that you may find useful for product applications.

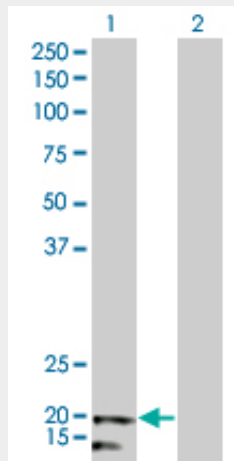
- [Western Blot](#)
- [Blocking Peptides](#)
- [Dot Blot](#)

- [Immunohistochemistry](#)
- [Immunofluorescence](#)
- [Immunoprecipitation](#)
- [Flow Cytometry](#)
- [Cell Culture](#)

### NDUFB5 Antibody (monoclonal) (M01) - Images



Antibody Reactive Against Recombinant Protein. Western Blot detection against Immunogen (36.19 kDa) .



Western Blot analysis of NDUFB5 expression in transfected 293T cell line by NDUFB5 monoclonal antibody (M01), clone 5G5.

Lane 1: NDUFB5 transfected lysate(21.8 kDa).

Lane 2: Non-transfected lysate.

### NDUFB5 Antibody (monoclonal) (M01) - Background

The protein encoded by this gene is a subunit of the multisubunit NADH:ubiquinone oxidoreductase (complex I). Mammalian complex I is composed of 45 different subunits. It locates at the mitochondrial inner membrane. This protein has NADH dehydrogenase activity and oxidoreductase activity. It transfers electrons from NADH to the respiratory chain. The immediate electron acceptor for the enzyme is believed to be ubiquinone.

### NDUFB5 Antibody (monoclonal) (M01) - References

Association study between single-nucleotide polymorphisms in 199 drug-related genes and commonly measured quantitative traits of 752 healthy Japanese subjects. Saito A, et al. *J Hum Genet*, 2009 Jun. PMID 19343046. Polymorphisms in mitochondrial genes and prostate cancer risk. Wang L, et al. *Cancer Epidemiol Biomarkers Prev*, 2008 Dec. PMID 19064571. Alterations in oligodendrocyte proteins, calcium homeostasis and new potential markers in schizophrenia anterior temporal lobe are revealed by shotgun proteome analysis. Martins-de-Souza D, et al. *J Neural Transm*, 2009 Mar. PMID 19034380. Oxidative stress, telomere length and biomarkers of physical aging in a cohort aged 79 years from the 1932 Scottish Mental Survey. Starr JM, et al. *Mech Ageing Dev*, 2008 Dec. PMID 18977241. Toward a confocal subcellular atlas of the human proteome. Barbe L, et al. *Mol Cell Proteomics*, 2008 Mar. PMID 18029348.