

**MYL1 Antibody (monoclonal) (M01)**

Mouse monoclonal antibody raised against a partial recombinant MYL1.

Catalog # AT2951a

**Specification**

---

**MYL1 Antibody (monoclonal) (M01) - Product Information**

Application	WB, IHC, E
Primary Accession	<a href="#">P05976</a>
Other Accession	<a href="#">NM_079422</a>
Reactivity	Human
Host	mouse
Clonality	Monoclonal
Isotype	IgG2a Kappa
Calculated MW	21145

**MYL1 Antibody (monoclonal) (M01) - Additional Information****Gene ID** 4632**Other Names**

Myosin light chain 1/3, skeletal muscle isoform, MLC1/MLC3, MLC1F/MLC3F, Myosin light chain alkali 1/2, Myosin light chain A1/A2, MYL1

**Target/Specificity**

MYL1 (NP\_524146, 1 a.a. ~ 80 a.a) partial recombinant protein with GST tag. MW of the GST tag alone is 26 KDa.

**Dilution**

WB~~1:500~1000

**Format**

Clear, colorless solution in phosphate buffered saline, pH 7.2 .

**Storage**

Store at -20°C or lower. Aliquot to avoid repeated freezing and thawing.

**Precautions**

MYL1 Antibody (monoclonal) (M01) is for research use only and not for use in diagnostic or therapeutic procedures.

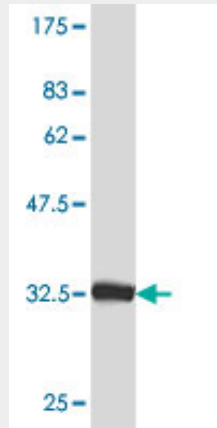
**MYL1 Antibody (monoclonal) (M01) - Protocols**

Provided below are standard protocols that you may find useful for product applications.

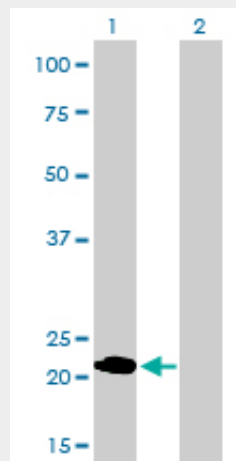
- [Western Blot](#)
- [Blocking Peptides](#)
- [Dot Blot](#)

- [Immunohistochemistry](#)
- [Immunofluorescence](#)
- [Immunoprecipitation](#)
- [Flow Cytometry](#)
- [Cell Culture](#)

### MYL1 Antibody (monoclonal) (M01) - Images



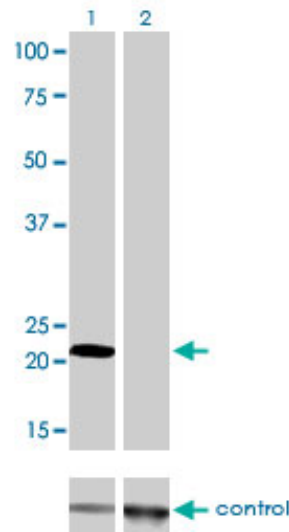
Antibody Reactive Against Recombinant Protein. Western Blot detection against Immunogen (34.54 KDa) .



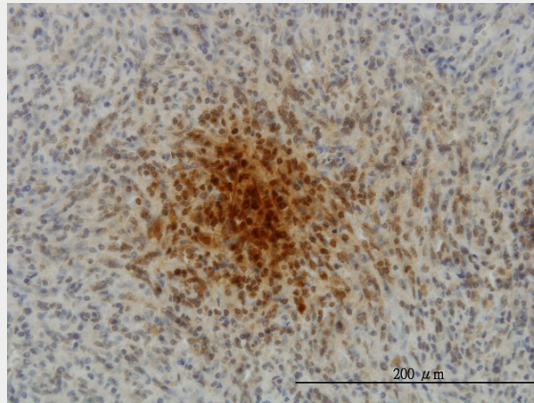
Western Blot analysis of MYL1 expression in transfected 293T cell line by MYL1 monoclonal antibody (M01), clone 2D9.

Lane 1: MYL1 transfected lysate(21.1 KDa).

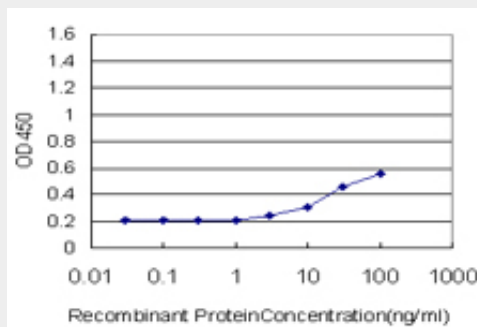
Lane 2: Non-transfected lysate.



Western blot analysis of MYL1 over-expressed 293 cell line, cotransfected with MYL1 Validated Chimera RNAi ( Cat # AT2951a )



Immunoperoxidase of monoclonal antibody to MYL1 on formalin-fixed paraffin-embedded human spleen. [antibody concentration 3 ug/ml]



Detection limit for recombinant GST tagged MYL1 is approximately 3ng/ml as a capture antibody.

### MYL1 Antibody (monoclonal) (M01) - Background

Myosin is a hexameric ATPase cellular motor protein. It is composed of two heavy chains, two nonphosphorylatable alkali light chains, and two phosphorylatable regulatory light chains. This gene encodes a myosin alkali light chain expressed in fast skeletal muscle. Two transcript variants have been identified for this gene.

### MYL1 Antibody (monoclonal) (M01) - References

Diversification of transcriptional modulation: large-scale identification and characterization of putative alternative promoters of human genes. Kimura K, et al. *Genome Res*, 2006 Jan. PMID 16344560. The status, quality, and expansion of the NIH full-length cDNA project: the Mammalian Gene Collection (MGC). Gerhard DS, et al. *Genome Res*, 2004 Oct. PMID 15489334. Generation and initial analysis of more than 15,000 full-length human and mouse cDNA sequences. Strausberg RL, et al. *Proc Natl Acad Sci U S A*, 2002 Dec 24. PMID 12477932. Interaction of ADP-ribosylated actin with actin binding proteins. Ballweber E, et al. *FEBS Lett*, 2001 Nov 9. PMID 11707283. A nonerythroid isoform of protein 4.1R interacts with components of the contractile apparatus in skeletal myofibers. Kontrogianni-Konstantopoulos A, et al. *Mol Biol Cell*, 2000 Nov. PMID 11071908.