

MYBL2 Antibody (monoclonal) (M02)

Mouse monoclonal antibody raised against a partial recombinant MYBL2.

Catalog # AT2942a

Specification

MYBL2 Antibody (monoclonal) (M02) - Product Information

Application	IF, WB, E
Primary Accession	P10244
Other Accession	BC053555
Reactivity	Human
Host	mouse
Clonality	Monoclonal
Isotype	IgG1 Kappa
Calculated MW	78764

MYBL2 Antibody (monoclonal) (M02) - Additional Information**Gene ID** 4605**Other Names**

Myb-related protein B, B-Myb, Myb-like protein 2, MYBL2, BMYB

Target/Specificity

MYBL2 (AAH53555, 601 a.a. ~ 700 a.a) partial recombinant protein with GST tag. MW of the GST tag alone is 26 KDa.

Dilution

WB ~ ~ 1:500 ~ 1000

Format

Clear, colorless solution in phosphate buffered saline, pH 7.2 .

Storage

Store at -20°C or lower. Aliquot to avoid repeated freezing and thawing.

Precautions

MYBL2 Antibody (monoclonal) (M02) is for research use only and not for use in diagnostic or therapeutic procedures.

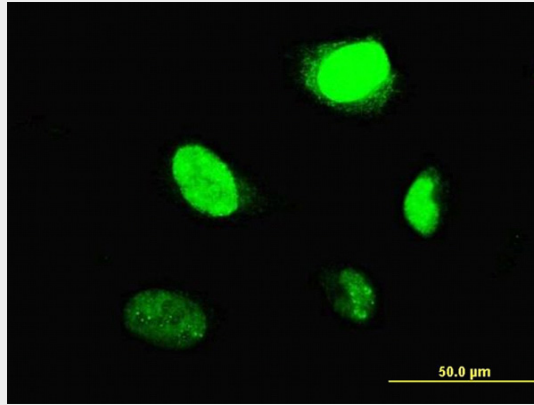
MYBL2 Antibody (monoclonal) (M02) - Protocols

Provided below are standard protocols that you may find useful for product applications.

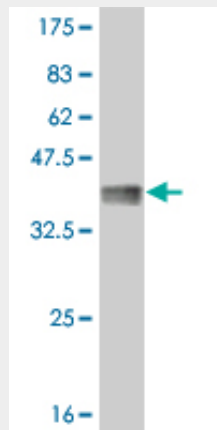
- [Western Blot](#)
- [Blocking Peptides](#)
- [Dot Blot](#)
- [Immunohistochemistry](#)

- [Immunofluorescence](#)
- [Immunoprecipitation](#)
- [Flow Cytometry](#)
- [Cell Culture](#)

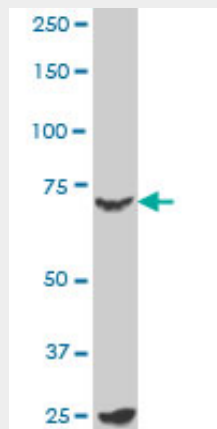
MYBL2 Antibody (monoclonal) (M02) - Images



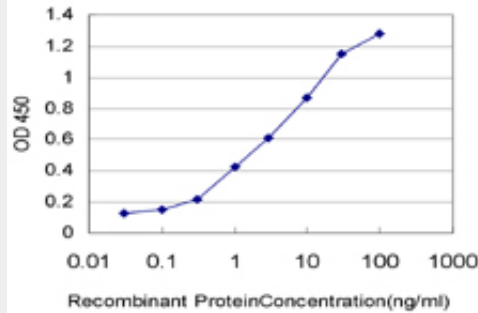
Immunofluorescence of monoclonal antibody to MYBL2 on HeLa cell. [antibody concentration 10 ug/ml]



Antibody Reactive Against Recombinant Protein. Western Blot detection against Immunogen (36.63 KDa) .



MYBL2 monoclonal antibody (M02), clone 1C7 Western Blot analysis of MYBL2 expression in K-562 ((Cat # AT2942a)



Detection limit for recombinant GST tagged MYBL2 is approximately 0.03ng/ml as a capture antibody.

MYBL2 Antibody (monoclonal) (M02) - Background

The protein encoded by this gene, a member of the MYB family of transcription factor genes, is a nuclear protein involved in cell cycle progression. The encoded protein is phosphorylated by cyclin A/cyclin-dependent kinase 2 during the S-phase of the cell cycle and possesses both activator and repressor activities. It has been shown to activate the cell division cycle 2, cyclin D1, and insulin-like growth factor-binding protein 5 genes. Transcript variants may exist for this gene, but their full-length natures have not been determined.

MYBL2 Antibody (monoclonal) (M02) - References

Focal amplifications are associated with high grade and recurrences in stage Ta bladder carcinoma. Nord H, et al. *Int J Cancer*, 2010 Mar 15. PMID 19821490. Genetic susceptibility to distinct bladder cancer subphenotypes. Guey LT, et al. *Eur Urol*, 2010 Feb. PMID 19692168. PTEN identified as important risk factor of chronic obstructive pulmonary disease. Hosgood HD 3rd, et al. *Respir Med*, 2009 Dec. PMID 19625176. B-MYB is required for recovery from the DNA damage-induced G2 checkpoint in p53 mutant cells. Mannefeld M, et al. *Cancer Res*, 2009 May 1. PMID 19383908. Polymorphisms in innate immunity genes and lung cancer risk in Xuanwei, China. Shen M, et al. *Environ Mol Mutagen*, 2009 May. PMID 19170196.