

## **MSI2 Antibody (monoclonal) (M08)**

Mouse monoclonal antibody raised against a full length recombinant MSI2.

Catalog # AT2915a

### **Specification**

---

#### **MSI2 Antibody (monoclonal) (M08) - Product Information**

Application	WB, E
Primary Accession	<a href="#">O96DH6</a>
Other Accession	<a href="#">BC001526</a>
Reactivity	Human
Host	mouse
Clonality	Monoclonal
Isotype	IgG2a Kappa
Calculated MW	35197

#### **MSI2 Antibody (monoclonal) (M08) - Additional Information**

**Gene ID** 124540

##### **Other Names**

RNA-binding protein Musashi homolog 2, Musashi-2, MSI2

##### **Target/Specificity**

MSI2 (AAH01526, 1 a.a. ~ 328 a.a) full-length recombinant protein with GST tag. MW of the GST tag alone is 26 KDa.

##### **Dilution**

WB~~1:500~1000

##### **Format**

Clear, colorless solution in phosphate buffered saline, pH 7.2 .

##### **Storage**

Store at -20°C or lower. Aliquot to avoid repeated freezing and thawing.

##### **Precautions**

MSI2 Antibody (monoclonal) (M08) is for research use only and not for use in diagnostic or therapeutic procedures.

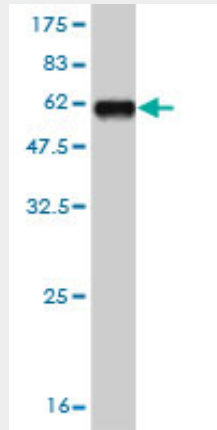
#### **MSI2 Antibody (monoclonal) (M08) - Protocols**

Provided below are standard protocols that you may find useful for product applications.

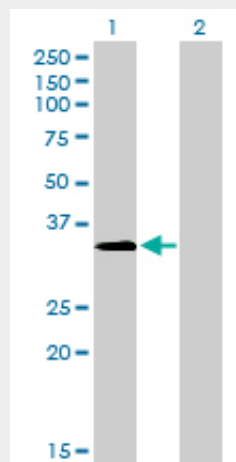
- [Western Blot](#)
- [Blocking Peptides](#)
- [Dot Blot](#)
- [Immunohistochemistry](#)

- [Immunofluorescence](#)
- [Immunoprecipitation](#)
- [Flow Cytometry](#)
- [Cell Culture](#)

### MSI2 Antibody (monoclonal) (M08) - Images

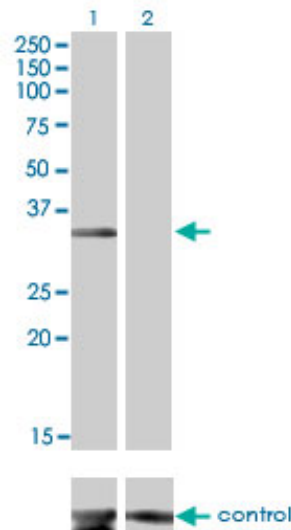


Antibody Reactive Against Recombinant Protein. Western Blot detection against Immunogen (61.82 KDa) .

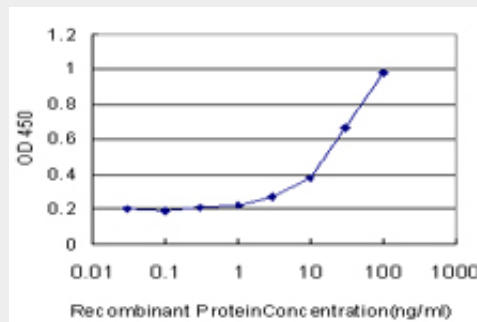


Western Blot analysis of MSI2 expression in transfected 293T cell line by MSI2 monoclonal antibody (M08), clone 2D12.

Lane 1: MSI2 transfected lysate(35.2 KDa).  
Lane 2: Non-transfected lysate.



Western blot analysis of MSI2 over-expressed 293 cell line, cotransfected with MSI2 Validated Chimera RNAi ( (Cat # AT2915a )



Detection limit for recombinant GST tagged MSI2 is approximately 1ng/ml as a capture antibody.

### MSI2 Antibody (monoclonal) (M08) - Background

This gene encodes a protein containing two conserved tandem RNA recognition motifs. Similar proteins in other species function as RNA-binding proteins and play central roles in posttranscriptional gene regulation. Two transcript variants encoding distinct isoforms have been identified for this gene.

### MSI2 Antibody (monoclonal) (M08) - References

Variation at the NFATC2 Locus Increases the Risk of Thiazolidinedione-Induced Edema in the Diabetes REduction Assessment with ramipril and rosiglitazone Medication (DREAM) Study. Bailey SD, et al. Diabetes Care, 2010 Jul 13. PMID 20628086. Personalized smoking cessation: interactions between nicotine dose, dependence and quit-success genotype score. Rose JE, et al. Mol Med, 2010 Jul-Aug. PMID 20379614. Gene-centric association signals for lipids and apolipoproteins identified via the HumanCVD BeadChip. Talmud PJ, et al. Am J Hum Genet, 2009 Nov. PMID 19913121. EVI1 overexpression in t(3;17) positive myeloid malignancies results from juxtaposition of EVI1 to the MSI2 locus at 17q22. De Weer A, et al. Haematologica, 2008 Dec. PMID 18815193. The status, quality, and expansion of the NIH full-length cDNA project: the Mammalian Gene Collection (MGC). Gerhard DS, et al. Genome Res, 2004 Oct. PMID 15489334.