

MSI1 Antibody (monoclonal) (M05)

Mouse monoclonal antibody raised against a full length recombinant MSI1.

Catalog # AT2914a

Specification

MSI1 Antibody (monoclonal) (M05) - Product Information

Application	IF, WB, IHC, E
Primary Accession	O43347
Other Accession	NM_002442
Reactivity	Human
Host	mouse
Clonality	Monoclonal
Isotype	IgG2b Kappa
Calculated MW	39125

MSI1 Antibody (monoclonal) (M05) - Additional Information**Gene ID** 4440**Other Names**

RNA-binding protein Musashi homolog 1, Musashi-1, MSI1

Target/Specificity

MSI1 (NP_002433, 1 a.a. ~ 87 a.a) full length recombinant protein with GST tag. MW of the GST tag alone is 26 KDa.

Dilution

WB~~1:500~1000

Format

Clear, colorless solution in phosphate buffered saline, pH 7.2 .

Storage

Store at -20°C or lower. Aliquot to avoid repeated freezing and thawing.

Precautions

MSI1 Antibody (monoclonal) (M05) is for research use only and not for use in diagnostic or therapeutic procedures.

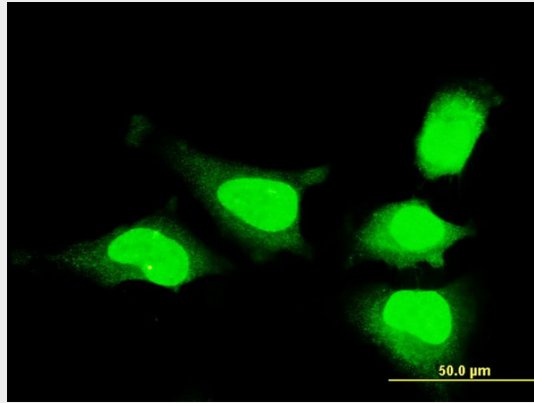
MSI1 Antibody (monoclonal) (M05) - Protocols

Provided below are standard protocols that you may find useful for product applications.

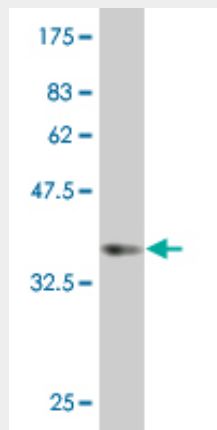
- [Western Blot](#)
- [Blocking Peptides](#)
- [Dot Blot](#)
- [Immunohistochemistry](#)

- [Immunofluorescence](#)
- [Immunoprecipitation](#)
- [Flow Cytometry](#)
- [Cell Culture](#)

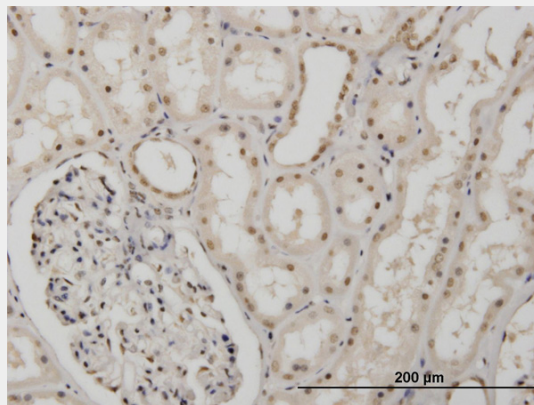
MSI1 Antibody (monoclonal) (M05) - Images



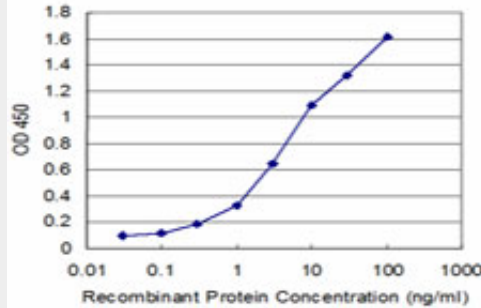
Immunofluorescence of monoclonal antibody to MSI1 on HeLa cell . [antibody concentration 10 ug/ml]



Antibody Reactive Against Recombinant Protein. Western Blot detection against Immunogen (35.57 KDa) .



Immunoperoxidase of monoclonal antibody to MSI1 on formalin-fixed paraffin-embedded human kidney. [antibody concentration 3 ug/ml]



Detection limit for recombinant GST tagged MSI1 is approximately 0.3ng/ml as a capture antibody.

MSI1 Antibody (monoclonal) (M05) - Background

This gene encodes a protein containing two conserved tandem RNA recognition motifs. Similar proteins in other species function as RNA-binding proteins and play central roles in posttranscriptional gene regulation. Expression of this gene has been correlated with the grade of the malignancy and proliferative activity in gliomas and melanomas. A pseudogene for this gene is located on chromosome 11q13.

MSI1 Antibody (monoclonal) (M05) - References

Expression of putative stem cell genes Musashi-1 and beta1-integrin in human colorectal adenomas and adenocarcinomas. Fan LF, et al. *Int J Colorectal Dis*, 2010 Jan. PMID 19714342. Genomic analyses of musashi1 downstream targets show a strong association with cancer-related processes. de Sousa Abreu R, et al. *J Biol Chem*, 2009 May 1. PMID 19258308. Musashi-1 suppresses expression of Paneth cell-specific genes in human intestinal epithelial cells. Murayama M, et al. *J Gastroenterol*, 2009. PMID 19214660. Musashi1 modulates cell proliferation genes in the medulloblastoma cell line Daoy. Sanchez-Diaz PC, et al. *BMC Cancer*, 2008 Sep 30. PMID 18826648. Increased expression of the adult stem cell marker Musashi-1 in endometriosis and endometrial carcinoma. G?tte M, et al. *J Pathol*, 2008 Jul. PMID 18473332.