

## MSI1 Antibody (monoclonal) (M04)

Mouse monoclonal antibody raised against a full length recombinant MSI1.

Catalog # AT2913a

### Specification

---

#### MSI1 Antibody (monoclonal) (M04) - Product Information

Application	IF, WB, IHC, E
Primary Accession	<a href="#">O43347</a>
Other Accession	<a href="#">NM_002442</a>
Reactivity	Human
Host	mouse
Clonality	Monoclonal
Isotype	IgG2a Kappa
Calculated MW	39125

#### MSI1 Antibody (monoclonal) (M04) - Additional Information

Gene ID 4440

#### Other Names

RNA-binding protein Musashi homolog 1, Musashi-1, MSI1

#### Target/Specificity

MSI1 (NP\_002433, 1 a.a. ~ 87 a.a) full length recombinant protein with GST tag. MW of the GST tag alone is 26 KDa.

#### Dilution

WB~~1:500~1000

#### Format

Clear, colorless solution in phosphate buffered saline, pH 7.2 .

#### Storage

Store at -20°C or lower. Aliquot to avoid repeated freezing and thawing.

#### Precautions

MSI1 Antibody (monoclonal) (M04) is for research use only and not for use in diagnostic or therapeutic procedures.

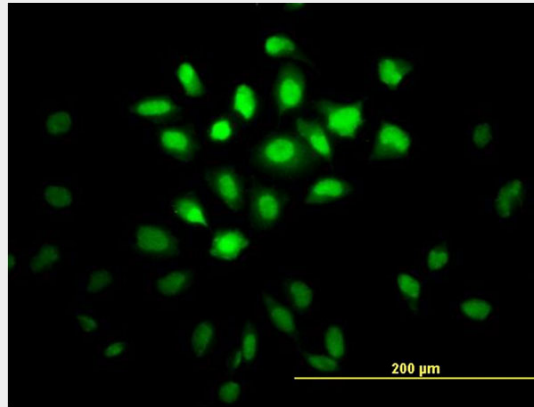
#### MSI1 Antibody (monoclonal) (M04) - Protocols

Provided below are standard protocols that you may find useful for product applications.

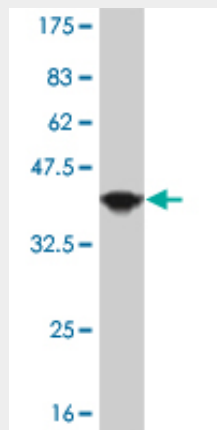
- [Western Blot](#)
- [Blocking Peptides](#)
- [Dot Blot](#)
- [Immunohistochemistry](#)

- [Immunofluorescence](#)
- [Immunoprecipitation](#)
- [Flow Cytometry](#)
- [Cell Culture](#)

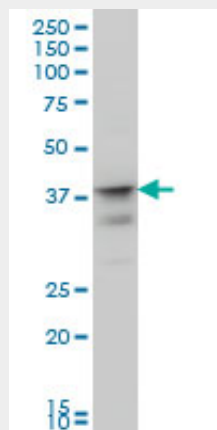
### MSI1 Antibody (monoclonal) (M04) - Images



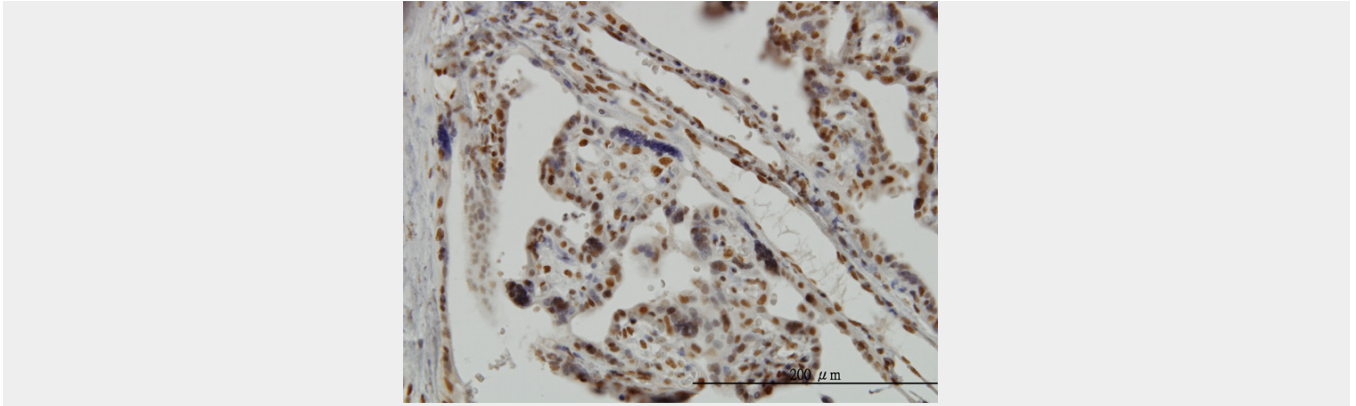
Immunofluorescence of monoclonal antibody to MSI1 on HeLa cell. [antibody concentration 10 ug/ml]



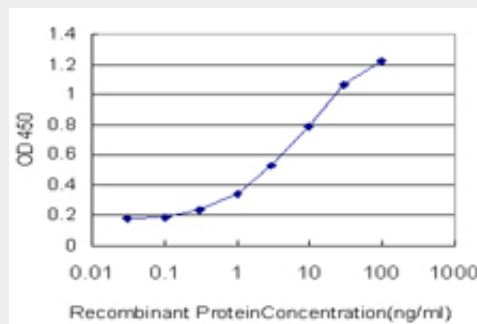
Antibody Reactive Against Recombinant Protein. Western Blot detection against Immunogen (35.57 KDa) .



MSI1 monoclonal antibody (M04), clone 3F2 Western Blot analysis of MSI1 expression in IMR-32 (Cat # AT2913a )



Immunoperoxidase of monoclonal antibody to MSI1 on formalin-fixed paraffin-embedded human placenta. [antibody concentration 3 ug/ml]



Detection limit for recombinant GST tagged MSI1 is approximately 0.3ng/ml as a capture antibody.

### **MSI1 Antibody (monoclonal) (M04) - Background**

This gene encodes a protein containing two conserved tandem RNA recognition motifs. Similar proteins in other species function as RNA-binding proteins and play central roles in posttranscriptional gene regulation. Expression of this gene has been correlated with the grade of the malignancy and proliferative activity in gliomas and melanomas. A pseudogene for this gene is located on chromosome 11q13.

### **MSI1 Antibody (monoclonal) (M04) - References**

1. Drug-resistant colon cancer cells produce high carcinoembryonic antigen and might not be cancer-initiating cells. Lee HC, Ling QD, Yu WC, Hung CM, Kao TC, Huang YW, Higuchi A. *Drug Des Devel Ther.* 2013 Jun 17;7:491-502. doi: 10.2147/DDDT.S45890. Print 2013.