

## **MS4A1 Antibody (monoclonal) (M01)**

Mouse monoclonal antibody raised against a partial recombinant MS4A1.

Catalog # AT2907a

### **Specification**

---

#### **MS4A1 Antibody (monoclonal) (M01) - Product Information**

|                   |                          |
|-------------------|--------------------------|
| Application       | WB, E                    |
| Primary Accession | <a href="#">P11836</a>   |
| Other Accession   | <a href="#">BC002807</a> |
| Reactivity        | Human                    |
| Host              | mouse                    |
| Clonality         | Monoclonal               |
| Isotype           | IgG1 Kappa               |
| Calculated MW     | 33077                    |

#### **MS4A1 Antibody (monoclonal) (M01) - Additional Information**

**Gene ID** 931

##### **Other Names**

B-lymphocyte antigen CD20, B-lymphocyte surface antigen B1, Bp35, Leukocyte surface antigen Leu-16, Membrane-spanning 4-domains subfamily A member 1, CD20, MS4A1, CD20

##### **Target/Specificity**

MS4A1 (AAH02807, 210 a.a. ~ 297 a.a) partial recombinant protein with GST tag. MW of the GST tag alone is 26 KDa.

##### **Dilution**

WB~~1:500~1000

##### **Format**

Clear, colorless solution in phosphate buffered saline, pH 7.2 .

##### **Storage**

Store at -20°C or lower. Aliquot to avoid repeated freezing and thawing.

##### **Precautions**

MS4A1 Antibody (monoclonal) (M01) is for research use only and not for use in diagnostic or therapeutic procedures.

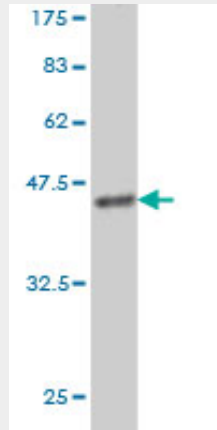
#### **MS4A1 Antibody (monoclonal) (M01) - Protocols**

Provided below are standard protocols that you may find useful for product applications.

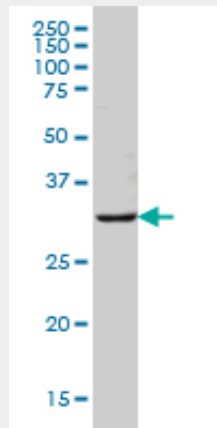
- [Western Blot](#)
- [Blocking Peptides](#)
- [Dot Blot](#)

- [Immunohistochemistry](#)
- [Immunofluorescence](#)
- [Immunoprecipitation](#)
- [Flow Cytometry](#)
- [Cell Culture](#)

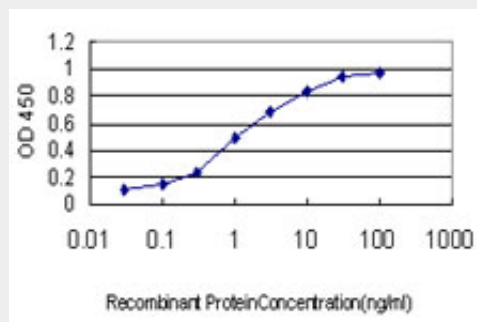
### MS4A1 Antibody (monoclonal) (M01) - Images



Antibody Reactive Against Recombinant Protein. Western Blot detection against Immunogen (35.42 KDa) .



MS4A1 monoclonal antibody (M01), clone 5C11 Western Blot analysis of MS4A1 expression in HeLa S3 NE ( (Cat # AT2907a )



Detection limit for recombinant GST tagged MS4A1 is approximately 0.1ng/ml as a capture antibody.

### MS4A1 Antibody (monoclonal) (M01) - Background

This gene encodes a member of the membrane-spanning 4A gene family. Members of this nascent protein family are characterized by common structural features and similar intron/exon splice boundaries and display unique expression patterns among hematopoietic cells and nonlymphoid tissues. This gene encodes a B-lymphocyte surface molecule which plays a role in the development and differentiation of B-cells into plasma cells. This family member is localized to 11q12, among a cluster of family members. Alternative splicing of this gene results in two transcript variants which encode the same protein.

#### **MS4A1 Antibody (monoclonal) (M01) - References**

Double-Hit mature B-cell lymphomas show a common immunophenotype by flow cytometry that includes decreased CD20 expression. Wu D, et al. Am J Clin Pathol, 2010 Aug. PMID 20660329. In vivo cytotoxicity of type I CD20 antibodies critically depends on Fc receptor ITAM signaling. de Haij S, et al. Cancer Res, 2010 Apr 15. PMID 20354182. CD20 as a target for therapeutic type I and II monoclonal antibodies. Beers SA, et al. Semin Hematol, 2010 Apr. PMID 20350657. New genetic associations detected in a host response study to hepatitis B vaccine. Davila S, et al. Genes Immun, 2010 Apr. PMID 20237496. CD20 deficiency in humans results in impaired T cell-independent antibody responses. Kuijpers TW, et al. J Clin Invest, 2010 Jan 4. PMID 20038800.