

MRPS25 Antibody (monoclonal) (M01)**Mouse monoclonal antibody raised against a full-length recombinant MRPS25.****Catalog # AT2903a****Specification**

MRPS25 Antibody (monoclonal) (M01) - Product Information

Application	WB
Primary Accession	P82663
Other Accession	BC003590
Reactivity	Human, Mouse, Rat
Host	mouse
Clonality	Monoclonal
Isotype	IgG2a Kappa
Calculated MW	20116

MRPS25 Antibody (monoclonal) (M01) - Additional Information**Gene ID** 64432**Other Names**

28S ribosomal protein S25, mitochondrial, MRP-S25, S25mt, MRPS25, RPMS25

Target/Specificity

MRPS25 (AAH03590, 1 a.a. ~ 173 a.a) full-length recombinant protein with GST tag. MW of the GST tag alone is 26 KDa.

Dilution

WB~~1:500~1000

Format

Clear, colorless solution in phosphate buffered saline, pH 7.2 .

Storage

Store at -20°C or lower. Aliquot to avoid repeated freezing and thawing.

Precautions

MRPS25 Antibody (monoclonal) (M01) is for research use only and not for use in diagnostic or therapeutic procedures.

MRPS25 Antibody (monoclonal) (M01) - Protocols

Provided below are standard protocols that you may find useful for product applications.

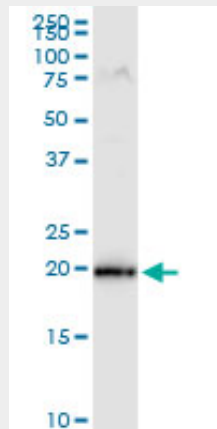
- [Western Blot](#)
- [Blocking Peptides](#)
- [Dot Blot](#)
- [Immunohistochemistry](#)

- [Immunofluorescence](#)
- [Immunoprecipitation](#)
- [Flow Cytometry](#)
- [Cell Culture](#)

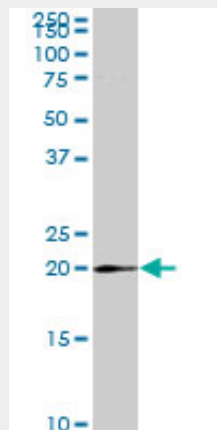
MRPS25 Antibody (monoclonal) (M01) - Images



Antibody Reactive Against Recombinant Protein. Western Blot detection against Immunogen (44.77 kDa) .



MRPS25 monoclonal antibody (M01), clone 3E6. Western Blot analysis of MRPS25 expression in PC-12 (Cat # AT2903a)



MRPS25 monoclonal antibody (M01), clone 3E6. Western Blot analysis of MRPS25 expression in

NIH/3T3 ((Cat # AT2903a)

MRPS25 Antibody (monoclonal) (M01) - Background

Mammalian mitochondrial ribosomal proteins are encoded by nuclear genes and help in protein synthesis within the mitochondrion. Mitochondrial ribosomes (mitoribosomes) consist of a small 28S subunit and a large 39S subunit. They have an estimated 75% protein to rRNA composition compared to prokaryotic ribosomes, where this ratio is reversed. Another difference between mammalian mitoribosomes and prokaryotic ribosomes is that the latter contain a 5S rRNA. Among different species, the proteins comprising the mitoribosome differ greatly in sequence, and sometimes in biochemical properties, which prevents easy recognition by sequence homology. This gene encodes a 28S subunit protein. A pseudogene corresponding to this gene is found on chromosome 4.

MRPS25 Antibody (monoclonal) (M01) - References

Large-scale mapping of human protein-protein interactions by mass spectrometry. Ewing RM, et al. *Mol Syst Biol*, 2007. PMID 17353931. The status, quality, and expansion of the NIH full-length cDNA project: the Mammalian Gene Collection (MGC). Gerhard DS, et al. *Genome Res*, 2004 Oct. PMID 15489334. Complete sequencing and characterization of 21,243 full-length human cDNAs. Ota T, et al. *Nat Genet*, 2004 Jan. PMID 14702039. Identification and characterization of over 100 mitochondrial ribosomal protein pseudogenes in the human genome. Zhang Z, et al. *Genomics*, 2003 May. PMID 12706105. Generation and initial analysis of more than 15,000 full-length human and mouse cDNA sequences. Strausberg RL, et al. *Proc Natl Acad Sci U S A*, 2002 Dec 24. PMID 12477932.