

**MMP28 Antibody (monoclonal) (M01)**

Mouse monoclonal antibody raised against a partial recombinant MMP28.

Catalog # AT2882a

**Specification**

---

**MMP28 Antibody (monoclonal) (M01) - Product Information**

|                   |                           |
|-------------------|---------------------------|
| Application       | WB, E                     |
| Primary Accession | <a href="#">O9H239</a>    |
| Other Accession   | <a href="#">NM_024302</a> |
| Reactivity        | Human                     |
| Host              | mouse                     |
| Clonality         | Monoclonal                |
| Isotype           | IgG2a Kappa               |
| Calculated MW     | 58939                     |

**MMP28 Antibody (monoclonal) (M01) - Additional Information****Gene ID** 79148**Other Names**

Matrix metalloproteinase-28, MMP-28, 3424-, Epilysin, MMP28, MMP25

**Target/Specificity**

MMP28 (NP\_077278, 441 a.a. ~ 520 a.a) partial recombinant protein with GST tag. MW of the GST tag alone is 26 KDa.

**Dilution**

WB~~1:500~1000

**Format**

Clear, colorless solution in phosphate buffered saline, pH 7.2 .

**Storage**

Store at -20°C or lower. Aliquot to avoid repeated freezing and thawing.

**Precautions**

MMP28 Antibody (monoclonal) (M01) is for research use only and not for use in diagnostic or therapeutic procedures.

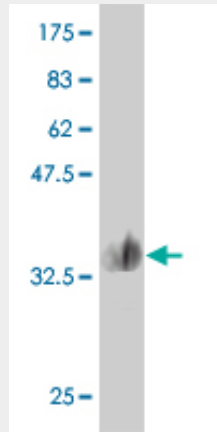
**MMP28 Antibody (monoclonal) (M01) - Protocols**

Provided below are standard protocols that you may find useful for product applications.

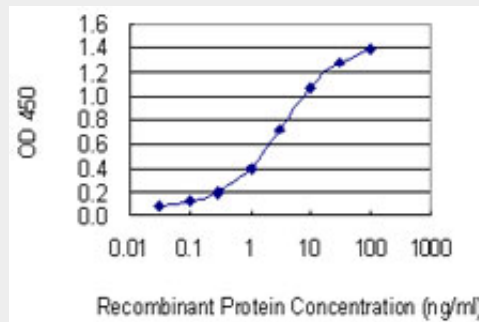
- [Western Blot](#)
- [Blocking Peptides](#)
- [Dot Blot](#)
- [Immunohistochemistry](#)

- [Immunofluorescence](#)
- [Immunoprecipitation](#)
- [Flow Cytometry](#)
- [Cell Culture](#)

### MMP28 Antibody (monoclonal) (M01) - Images



Antibody Reactive Against Recombinant Protein. Western Blot detection against Immunogen (34.54 KDa) .



Detection limit for recombinant GST tagged MMP28 is 0.03 ng/ml as a capture antibody.

### MMP28 Antibody (monoclonal) (M01) - Background

Proteins of the matrix metalloproteinase (MMP) family are involved in the breakdown of extracellular matrix for both normal physiological processes, such as embryonic development, reproduction and tissue remodeling, and disease processes, such as asthma and metastasis. This gene encodes a secreted enzyme that degrades casein. Its expression pattern suggests that it plays a role in tissue homeostasis and in wound repair. Transcript variants encoding different isoforms have been described.

### MMP28 Antibody (monoclonal) (M01) - References

MMP28 gene expression is regulated by Sp1 transcription factor acetylation. Swingler TE, et al. *Biochem J*, 2010 Apr 14. PMID 20144149. Matrix metalloproteinase 28, a novel matrix metalloproteinase, is constitutively expressed in human intervertebral disc tissue and is present in matrix of more degenerated discs. Gruber HE, et al. *Arthritis Res Ther*, 2009. PMID 20003223. Expression of MMP-10, MMP-21, MMP-26, and MMP-28 in Merkel cell carcinoma. Suomela S, et al. *Virchows Arch*, 2009 Dec. PMID 19921252. Epilysin (MMP-28) is deposited to the basolateral extracellular matrix of epithelial cells. Heiskanen TJ, et al. *Matrix Biol*, 2009 Mar. PMID 19379669. Expression and function of matrix metalloproteinase (MMP)-28. Rodgers UR, et al. *Matrix Biol*, 2009 Jun. PMID 19375502.