

## **MKRN2 Antibody (monoclonal) (M01)**

Mouse monoclonal antibody raised against a partial recombinant MKRN2.

Catalog # AT2876a

### **Specification**

---

#### **MKRN2 Antibody (monoclonal) (M01) - Product Information**

Application	IF, WB, E
Primary Accession	<a href="#">O9H000</a>
Other Accession	<a href="#">NM_014160</a>
Reactivity	Human
Host	mouse
Clonality	Monoclonal
Isotype	IgG1 Kappa
Calculated MW	46940

#### **MKRN2 Antibody (monoclonal) (M01) - Additional Information**

**Gene ID** 23609

##### **Other Names**

Probable E3 ubiquitin-protein ligase makorin-2, 632-, RING finger protein 62, MKRN2, RNF62

##### **Target/Specificity**

MKRN2 (NP\_054879, 317 a.a. ~ 415 a.a) partial recombinant protein with GST tag. MW of the GST tag alone is 26 KDa.

##### **Dilution**

WB ~ ~ 1:500 ~ 1000

##### **Format**

Clear, colorless solution in phosphate buffered saline, pH 7.2 .

##### **Storage**

Store at -20°C or lower. Aliquot to avoid repeated freezing and thawing.

##### **Precautions**

MKRN2 Antibody (monoclonal) (M01) is for research use only and not for use in diagnostic or therapeutic procedures.

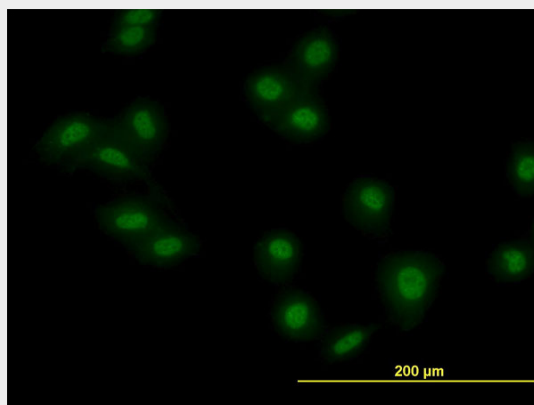
#### **MKRN2 Antibody (monoclonal) (M01) - Protocols**

Provided below are standard protocols that you may find useful for product applications.

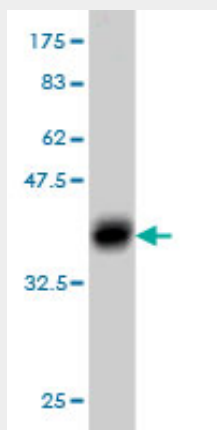
- [Western Blot](#)
- [Blocking Peptides](#)
- [Dot Blot](#)
- [Immunohistochemistry](#)

- [Immunofluorescence](#)
- [Immunoprecipitation](#)
- [Flow Cytometry](#)
- [Cell Culture](#)

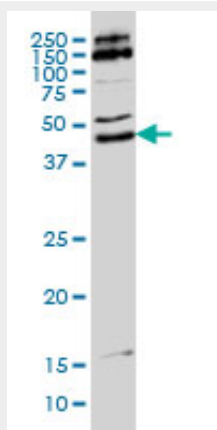
### MKRN2 Antibody (monoclonal) (M01) - Images



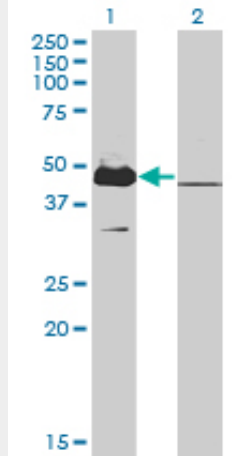
Immunofluorescence of monoclonal antibody to MKRN2 on HeLa cell. [antibody concentration 10 ug/ml]



Antibody Reactive Against Recombinant Protein. Western Blot detection against Immunogen (36.63 KDa) .



MKRN2 monoclonal antibody (M01), clone 5F8 Western Blot analysis of MKRN2 expression in HeLa S3 NE ( (Cat # AT2876a )

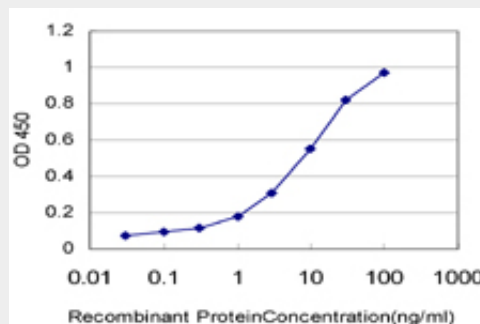


Western Blot analysis of MKRN2 expression in transfected 293T cell line by MKRN2 monoclonal antibody (M01), clone 5F8.

Lane 1: MKRN2 transfected lysate(46.9 KDa).  
 Lane 2: Non-transfected lysate.



Western blot analysis of MKRN2 over-expressed 293 cell line, cotransfected with MKRN2 Validated Chimera RNAi ( (Cat # AT2876a )



Detection limit for recombinant GST tagged MKRN2 is approximately 0.1ng/ml as a capture antibody.

### MKRN2 Antibody (monoclonal) (M01) - Background

Members of the makorin family, including MKRN2, have a characteristic zinc finger composition that suggests that they are ribonucleoproteins (Gray et al., 2001 [PubMed 11597136]).

### **MKRN2 Antibody (monoclonal) (M01) - References**

The status, quality, and expansion of the NIH full-length cDNA project: the Mammalian Gene Collection (MGC). Gerhard DS, et al. Genome Res, 2004 Oct. PMID 15489334. Complete sequencing and characterization of 21,243 full-length human cDNAs. Ota T, et al. Nat Genet, 2004 Jan. PMID 14702039. Generation and initial analysis of more than 15,000 full-length human and mouse cDNA sequences. Strausberg RL, et al. Proc Natl Acad Sci U S A, 2002 Dec 24. PMID 12477932. Phylogenetic conservation of the makorin-2 gene, encoding a multiple zinc-finger protein, antisense to the RAF1 proto-oncogene. Gray TA, et al. Genomics, 2001 Oct. PMID 11597136. Cloning and functional analysis of cDNAs with open reading frames for 300 previously undefined genes expressed in CD34+ hematopoietic stem/progenitor cells. Zhang QH, et al. Genome Res, 2000 Oct. PMID 11042152.