

MEIS2 Antibody (monoclonal) (M01)

Mouse monoclonal antibody raised against a full length recombinant MEIS2.

Catalog # AT2841a

Specification

MEIS2 Antibody (monoclonal) (M01) - Product Information

Application	IF, WB, IHC, E
Primary Accession	O14770
Other Accession	BC001516
Reactivity	Human
Host	mouse
Clonality	Monoclonal
Isotype	IgG1 kappa
Calculated MW	51790

MEIS2 Antibody (monoclonal) (M01) - Additional Information

Gene ID 4212

Other Names

Homeobox protein Meis2, Meis1-related protein 1, MEIS2, MRG1

Target/Specificity

MEIS2 (AAH01516, 1 a.a. ~ 381 a.a) full-length recombinant protein with GST tag. MW of the GST tag alone is 26 KDa.

Dilution

WB~~1:500~1000

Format

Clear, colorless solution in phosphate buffered saline, pH 7.2 .

Storage

Store at -20°C or lower. Aliquot to avoid repeated freezing and thawing.

Precautions

MEIS2 Antibody (monoclonal) (M01) is for research use only and not for use in diagnostic or therapeutic procedures.

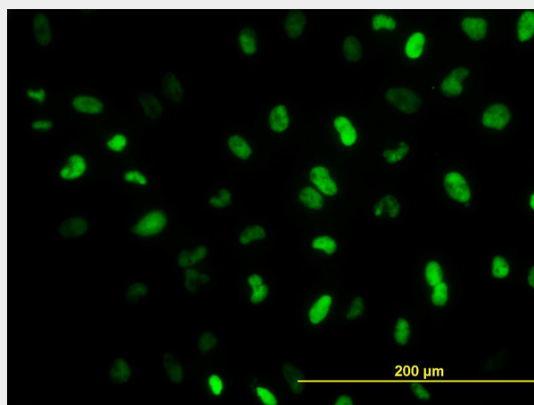
MEIS2 Antibody (monoclonal) (M01) - Protocols

Provided below are standard protocols that you may find useful for product applications.

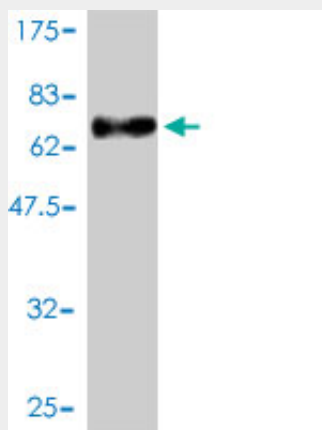
- [Western Blot](#)
- [Blocking Peptides](#)
- [Dot Blot](#)
- [Immunohistochemistry](#)

- [Immunofluorescence](#)
- [Immunoprecipitation](#)
- [Flow Cytometry](#)
- [Cell Culture](#)

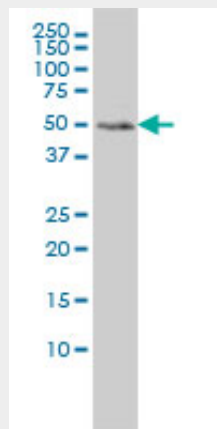
MEIS2 Antibody (monoclonal) (M01) - Images



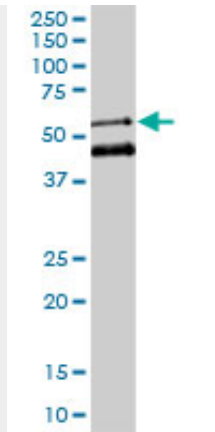
Immunofluorescence of monoclonal antibody to MEIS2 on HeLa cell. [antibody concentration 10 ug/ml]



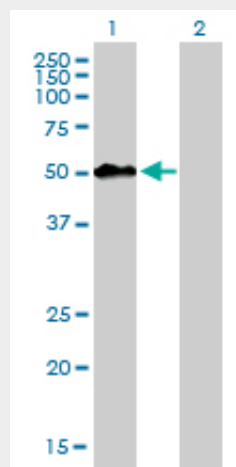
Antibody Reactive Against Recombinant Protein. Western Blot detection against Immunogen (67.65 KDa) .



MEIS2 monoclonal antibody (M01), clone 1H4 Western Blot analysis of MEIS2 expression in HeLa (Cat # AT2841a)



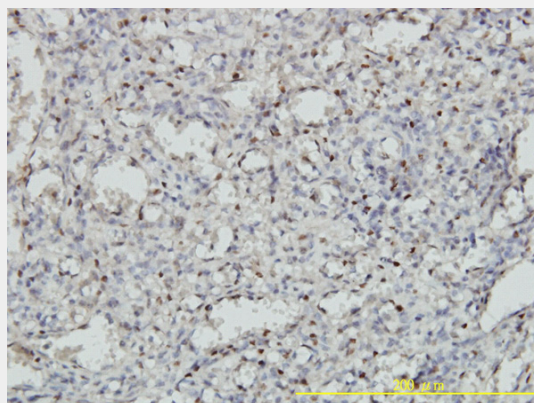
MEIS2 monoclonal antibody (M01), clone 1H4. Western Blot analysis of MEIS2 expression in K-562 (Cat # AT2841a)



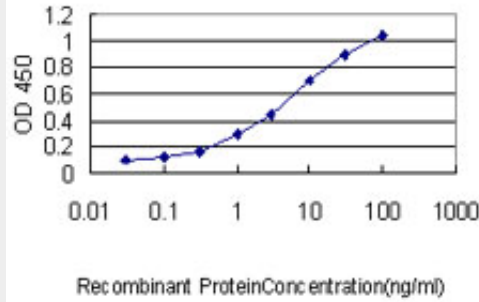
Western Blot analysis of MEIS2 expression in transfected 293T cell line by MEIS2 monoclonal antibody (M01), clone 1H4.

Lane 1: MEIS2 transfected lysate(51.1 KDa).

Lane 2: Non-transfected lysate.



Immunoperoxidase of monoclonal antibody to MEIS2 on formalin-fixed paraffin-embedded human spleen tissue. [antibody concentration 1 ug/ml]



Detection limit for recombinant GST tagged MEIS2 is approximately 0.03ng/ml as a capture antibody.

MEIS2 Antibody (monoclonal) (M01) - Background

This gene encodes a homeobox protein belonging to the TALE ('three amino acid loop extension') family of homeodomain-containing proteins. TALE homeobox proteins are highly conserved transcription regulators, and several members have been shown to be essential contributors to developmental programs. Multiple transcript variants encoding distinct isoforms have been described for this gene.

MEIS2 Antibody (monoclonal) (M01) - References

1.Cooperative transcriptional activation by klf4, meis2, and pbx1.Bjerke GA, Hyman-Walsh C, Wotton D.Mol Cell Biol. 2011 Sep;31(18):3723-33. Epub 2011 Jul 11.2.A neuronal migratory pathway crossing from diencephalon to telencephalon populates amygdala nuclei.Garcia-Moreno F, Pedraza M, Di Giovannantonio LG, Di Salvio M, Lopez-Mascaraque L, Simeone A, De Carlos JA.Nat Neurosci. 2010 Jun;13(6):680-9. Epub 2010 May 23.