

## **MEF2A Antibody (monoclonal) (M15)**

Mouse monoclonal antibody raised against a partial recombinant MEF2A.

Catalog # AT2835a

### **Specification**

---

#### **MEF2A Antibody (monoclonal) (M15) - Product Information**

Application	IF, WB, E
Primary Accession	<a href="#">Q02078</a>
Other Accession	<a href="#">BC013437</a>
Reactivity	Human
Host	mouse
Clonality	Monoclonal
Isotype	IgG2a Kappa
Calculated MW	54811

#### **MEF2A Antibody (monoclonal) (M15) - Additional Information**

**Gene ID** 4205

#### **Other Names**

Myocyte-specific enhancer factor 2A, Serum response factor-like protein 1, MEF2A, MEF2

#### **Target/Specificity**

MEF2A (AAH13437, 71 a.a. ~ 170 a.a) partial recombinant protein with GST tag. MW of the GST tag alone is 26 KDa.

#### **Dilution**

WB ~ ~ 1:500 ~ 1000

#### **Format**

Clear, colorless solution in phosphate buffered saline, pH 7.2 .

#### **Storage**

Store at -20°C or lower. Aliquot to avoid repeated freezing and thawing.

#### **Precautions**

MEF2A Antibody (monoclonal) (M15) is for research use only and not for use in diagnostic or therapeutic procedures.

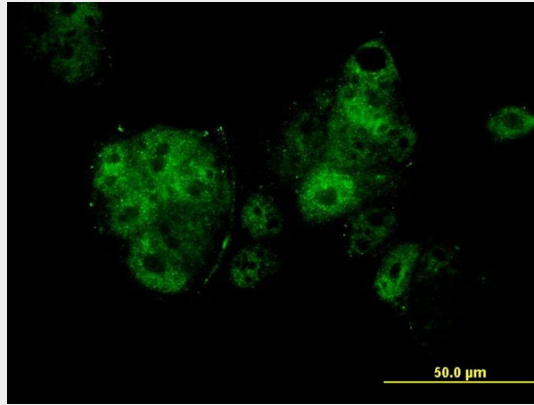
#### **MEF2A Antibody (monoclonal) (M15) - Protocols**

Provided below are standard protocols that you may find useful for product applications.

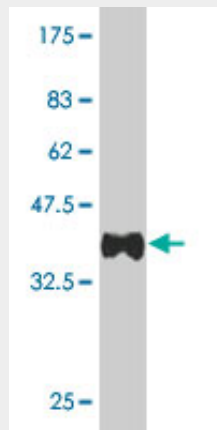
- [Western Blot](#)
- [Blocking Peptides](#)
- [Dot Blot](#)
- [Immunohistochemistry](#)

- [Immunofluorescence](#)
- [Immunoprecipitation](#)
- [Flow Cytometry](#)
- [Cell Culture](#)

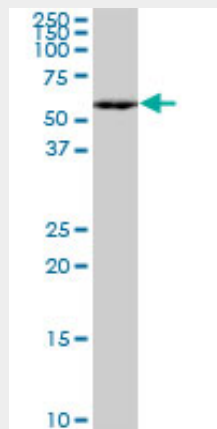
### MEF2A Antibody (monoclonal) (M15) - Images



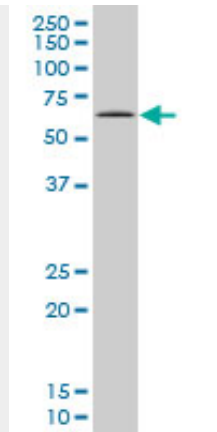
Immunofluorescence of monoclonal antibody to MEF2A on MCF-7 cell . [antibody concentration 10 ug/ml]



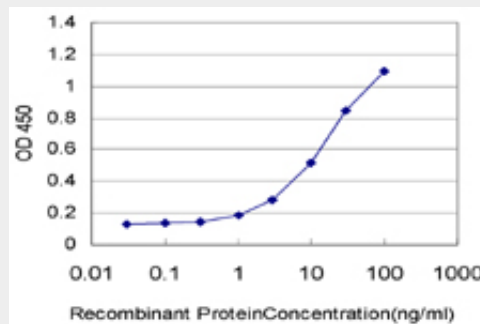
Antibody Reactive Against Recombinant Protein. Western Blot detection against Immunogen (37 KDa) .



MEF2A monoclonal antibody (M15), clone 1C8. Western Blot analysis of MEF2A expression in HepG2 ( (Cat # AT2835a )



MEF2A monoclonal antibody (M15), clone 1C8 Western Blot analysis of MEF2A expression in MCF-7 (Cat # AT2835a)



Detection limit for recombinant GST tagged MEF2A is approximately 0.3ng/ml as a capture antibody.

### MEF2A Antibody (monoclonal) (M15) - Background

The protein encoded by this gene is a DNA-binding transcription factor that activates many muscle-specific, growth factor-induced, and stress-induced genes. The encoded protein can act as a homodimer or as a heterodimer and is involved in several cellular processes, including muscle development, neuronal differentiation, cell growth control, and apoptosis. Defects in this gene could be a cause of autosomal dominant coronary artery disease 1 with myocardial infarction (ADCAD1). Several transcript variants encoding different isoforms have been found for this gene.

### MEF2A Antibody (monoclonal) (M15) - References

COMMON VARIANTS IN 40 GENES ASSESSED FOR DIABETES INCIDENCE AND RESPONSE TO METFORMIN AND LIFESTYLE INTERVENTIONS IN THE DIABETES PREVENTION PROGRAM. Jablonski KA, et al. *Diabetes*, 2010 Aug 3. PMID 20682687. Variation at the NFATC2 Locus Increases the Risk of Thiazolidinedione-Induced Edema in the Diabetes REduction Assessment with ramipril and rosiglitazone Medication (DREAM) Study. Bailey SD, et al. *Diabetes Care*, 2010 Jul 13. PMID 20628086. Dual roles for MEF2A and MEF2D during human macrophage terminal differentiation and c-Jun expression. Aude-Garcia C, et al. *Biochem J*, 2010 Sep 1. PMID 20590529. Structural changes in exon 11 of MEF2A are not related to sporadic coronary artery disease in Han Chinese population. Dai DP, et al. *Eur J Clin Invest*, 2010 Aug. PMID 20546016. Personalized smoking cessation: interactions between nicotine dose, dependence and quit-success genotype score. Rose JE, et al. *Mol Med*, 2010 Jul-Aug. PMID 20379614.