

MEF2A Antibody (monoclonal) (M08)

Mouse monoclonal antibody raised against a partial recombinant MEF2A.

Catalog # AT2834a

Specification

MEF2A Antibody (monoclonal) (M08) - Product Information

Application	IF, WB, E
Primary Accession	Q02078
Other Accession	BC013437
Reactivity	Human
Host	mouse
Clonality	Monoclonal
Isotype	IgG2a Kappa
Calculated MW	54811

MEF2A Antibody (monoclonal) (M08) - Additional Information**Gene ID** 4205**Other Names**

Myocyte-specific enhancer factor 2A, Serum response factor-like protein 1, MEF2A, MEF2

Target/Specificity

MEF2A (AAH13437, 71 a.a. ~ 170 a.a) partial recombinant protein with GST tag. MW of the GST tag alone is 26 KDa.

Dilution

WB ~ ~ 1:500 ~ 1000

Format

Clear, colorless solution in phosphate buffered saline, pH 7.2 .

Storage

Store at -20°C or lower. Aliquot to avoid repeated freezing and thawing.

Precautions

MEF2A Antibody (monoclonal) (M08) is for research use only and not for use in diagnostic or therapeutic procedures.

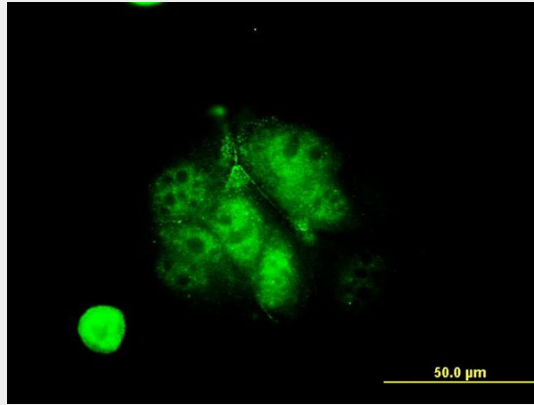
MEF2A Antibody (monoclonal) (M08) - Protocols

Provided below are standard protocols that you may find useful for product applications.

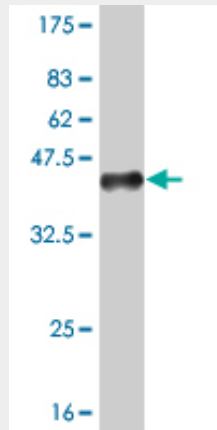
- [Western Blot](#)
- [Blocking Peptides](#)
- [Dot Blot](#)
- [Immunohistochemistry](#)

- [Immunofluorescence](#)
- [Immunoprecipitation](#)
- [Flow Cytometry](#)
- [Cell Culture](#)

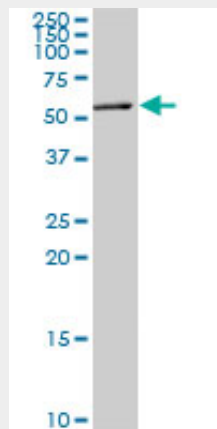
MEF2A Antibody (monoclonal) (M08) - Images



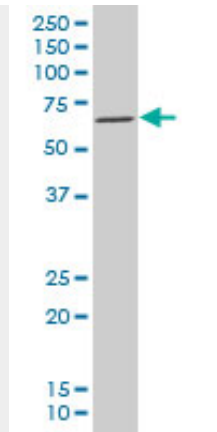
Immunofluorescence of monoclonal antibody to MEF2A on MCF-7 cell . [antibody concentration 10 ug/ml]



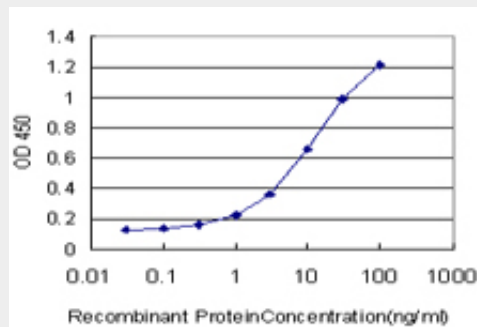
Antibody Reactive Against Recombinant Protein. Western Blot detection against Immunogen (37 KDa) .



MEF2A monoclonal antibody (M08), clone 1F8. Western Blot analysis of MEF2A expression in HepG2 ((Cat # AT2834a)



MEF2A monoclonal antibody (M08), clone 1F8 Western Blot analysis of MEF2A expression in MCF-7 (Cat # AT2834a)



Detection limit for recombinant GST tagged MEF2A is approximately 0.1ng/ml as a capture antibody.

MEF2A Antibody (monoclonal) (M08) - Background

The protein encoded by this gene is a DNA-binding transcription factor that activates many muscle-specific, growth factor-induced, and stress-induced genes. The encoded protein can act as a homodimer or as a heterodimer and is involved in several cellular processes, including muscle development, neuronal differentiation, cell growth control, and apoptosis. Defects in this gene could be a cause of autosomal dominant coronary artery disease 1 with myocardial infarction (ADCAD1). Several transcript variants encoding different isoforms have been found for this gene.

MEF2A Antibody (monoclonal) (M08) - References

COMMON VARIANTS IN 40 GENES ASSESSED FOR DIABETES INCIDENCE AND RESPONSE TO METFORMIN AND LIFESTYLE INTERVENTIONS IN THE DIABETES PREVENTION PROGRAM. Jablonski KA, et al. *Diabetes*, 2010 Aug 3. PMID 20682687. Variation at the NFATC2 Locus Increases the Risk of Thiazolidinedione-Induced Edema in the Diabetes REduction Assessment with ramipril and rosiglitazone Medication (DREAM) Study. Bailey SD, et al. *Diabetes Care*, 2010 Jul 13. PMID 20628086. Dual roles for MEF2A and MEF2D during human macrophage terminal differentiation and c-Jun expression. Aude-Garcia C, et al. *Biochem J*, 2010 Sep 1. PMID 20590529. Structural changes in exon 11 of MEF2A are not related to sporadic coronary artery disease in Han Chinese population. Dai DP, et al. *Eur J Clin Invest*, 2010 Aug. PMID 20546016. Personalized smoking cessation: interactions between nicotine dose, dependence and quit-success genotype score. Rose JE, et al. *Mol Med*, 2010 Jul-Aug. PMID 20379614.