

ME1 Antibody (monoclonal) (M03)**Mouse monoclonal antibody raised against a full length recombinant ME1.****Catalog # AT2830a****Specification**

ME1 Antibody (monoclonal) (M03) - Product Information

Application	WB, IHC, E
Primary Accession	P48163
Other Accession	BC025246
Reactivity	Human
Host	mouse
Clonality	Monoclonal
Isotype	IgG1 Kappa
Calculated MW	64150

ME1 Antibody (monoclonal) (M03) - Additional Information**Gene ID** 4199**Other Names**

NADP-dependent malic enzyme, NADP-ME, Malic enzyme 1, ME1

Target/Specificity

ME1 (AAH25246, 1 a.a. ~ 572 a.a) full-length recombinant protein with GST tag. MW of the GST tag alone is 26 KDa.

Dilution

WB~~1:500~1000

Format

Clear, colorless solution in phosphate buffered saline, pH 7.2 .

Storage

Store at -20°C or lower. Aliquot to avoid repeated freezing and thawing.

Precautions

ME1 Antibody (monoclonal) (M03) is for research use only and not for use in diagnostic or therapeutic procedures.

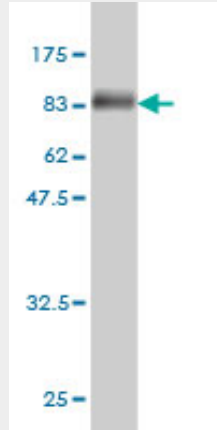
ME1 Antibody (monoclonal) (M03) - Protocols

Provided below are standard protocols that you may find useful for product applications.

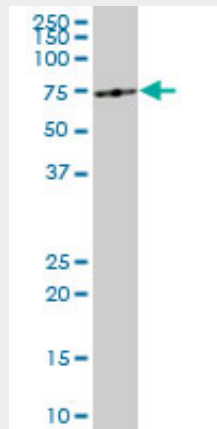
- [Western Blot](#)
- [Blocking Peptides](#)
- [Dot Blot](#)
- [Immunohistochemistry](#)

- [Immunofluorescence](#)
- [Immunoprecipitation](#)
- [Flow Cytometry](#)
- [Cell Culture](#)

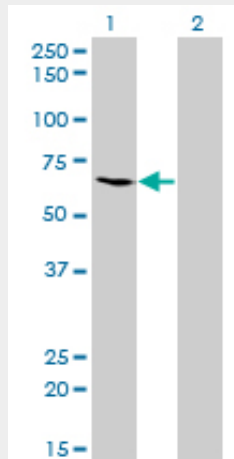
ME1 Antibody (monoclonal) (M03) - Images



Antibody Reactive Against Recombinant Protein. Western Blot detection against Immunogen (88.66 KDa) .

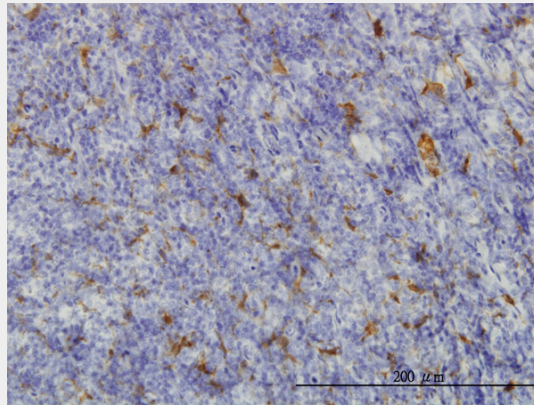


ME1 monoclonal antibody (M03), clone 3H5. Western Blot analysis of ME1 expression in HepG2 (Cat # AT2830a)

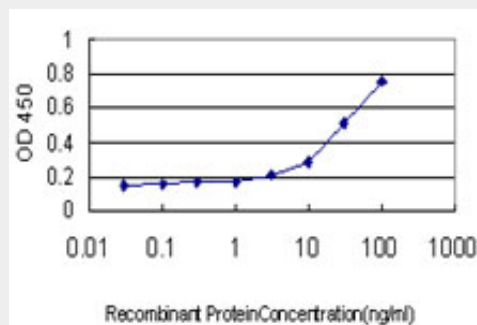


Western Blot analysis of ME1 expression in transfected 293T cell line by ME1 monoclonal antibody (M03), clone 3H5.

Lane 1: ME1 transfected lysate(64.1 KDa).
 Lane 2: Non-transfected lysate.



Immunoperoxidase of monoclonal antibody to ME1 on formalin-fixed paraffin-embedded human tonsil. [antibody concentration 0.5 ug/ml]



Detection limit for recombinant GST tagged ME1 is approximately 1ng/ml as a capture antibody.

ME1 Antibody (monoclonal) (M03) - Background

This gene encodes a cytosolic, NADP-dependent enzyme that generates NADPH for fatty acid biosynthesis. The activity of this enzyme, the reversible oxidative decarboxylation of malate, links the glycolytic and citric acid cycles. The regulation of expression for this gene is complex. Increased expression can result from elevated levels of thyroid hormones or by higher proportions of carbohydrates in the diet.

ME1 Antibody (monoclonal) (M03) - References

1.Role for malic enzyme, pyruvate carboxylation and mitochondrial malate import in the glucose-stimulated insulin secretion.Heart E, Cline GW, Collis LP, Pongratz RL, Gray J, Smith PJ. Am J Physiol Endocrinol Metab. 2009 Jun;296(6):E1354-62. Epub 2009 Mar 17.