

## MCC Antibody (monoclonal) (M01)

Mouse monoclonal antibody raised against a partial recombinant MCC.

Catalog # AT2815a

### Specification

---

#### MCC Antibody (monoclonal) (M01) - Product Information

Application	WB, E
Primary Accession	<a href="#">P23508</a>
Other Accession	<a href="#">BC009279</a>
Reactivity	Human
Host	mouse
Clonality	Monoclonal
Isotype	IgG1 Kappa
Calculated MW	93027

#### MCC Antibody (monoclonal) (M01) - Additional Information

**Gene ID** 4163

#### Other Names

Colorectal mutant cancer protein, Protein MCC, MCC

#### Target/Specificity

MCC (AAH09279, 31 a.a. ~ 130 a.a) partial recombinant protein with GST tag. MW of the GST tag alone is 26 KDa.

#### Dilution

WB~~1:500~1000

#### Format

Clear, colorless solution in phosphate buffered saline, pH 7.2 .

#### Storage

Store at -20°C or lower. Aliquot to avoid repeated freezing and thawing.

#### Precautions

MCC Antibody (monoclonal) (M01) is for research use only and not for use in diagnostic or therapeutic procedures.

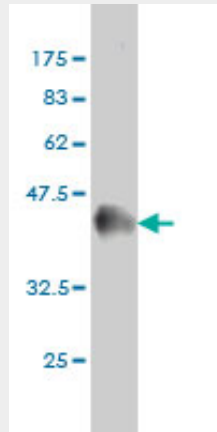
#### MCC Antibody (monoclonal) (M01) - Protocols

Provided below are standard protocols that you may find useful for product applications.

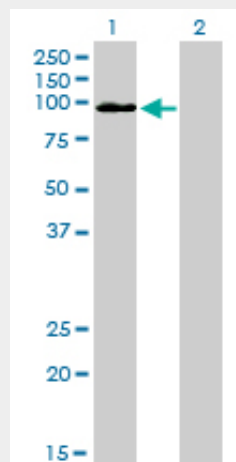
- [Western Blot](#)
- [Blocking Peptides](#)
- [Dot Blot](#)
- [Immunohistochemistry](#)

- [Immunofluorescence](#)
- [Immunoprecipitation](#)
- [Flow Cytometry](#)
- [Cell Culture](#)

### MCC Antibody (monoclonal) (M01) - Images

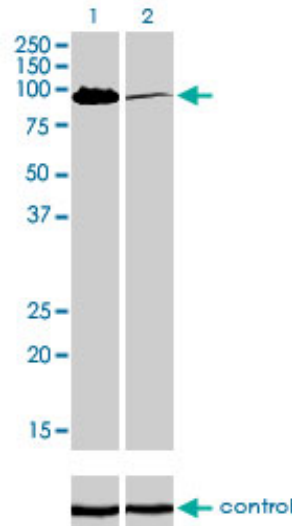


Antibody Reactive Against Recombinant Protein. Western Blot detection against Immunogen (36.63 kDa) .

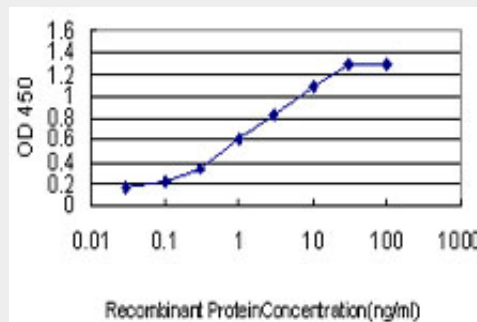


Western Blot analysis of MCC expression in transfected 293T cell line by MCC monoclonal antibody (M01), clone 1A7.

Lane 1: MCC transfected lysate(93.1 kDa).  
Lane 2: Non-transfected lysate.



Western blot analysis of MCC over-expressed 293 cell line, cotransfected with MCC Validated Chimera RNAi ( (Cat # AT2815a )



Detection limit for recombinant GST tagged MCC is approximately 0.03ng/ml as a capture antibody.

### MCC Antibody (monoclonal) (M01) - Background

This gene is a candidate colorectal tumor suppressor gene that is thought to negatively regulate cell cycle progression. The orthologous gene in the mouse expresses a phosphoprotein associated with the plasma membrane and membrane organelles, and overexpression of the mouse protein inhibits entry into S phase. Multiple transcript variants encoding different isoforms have been found for this gene.

### MCC Antibody (monoclonal) (M01) - References

Personalized smoking cessation: interactions between nicotine dose, dependence and quit-success genotype score. Rose JE, et al. Mol Med, 2010 Jul-Aug. PMID 20379614. Association of genetic variants with hemorrhagic stroke in Japanese individuals. Yoshida T, et al. Int J Mol Med, 2010 Apr. PMID 20198315. Assessment of a polymorphism of SDK1 with hypertension in Japanese Individuals. Oguri M, et al. Am J Hypertens, 2010 Jan. PMID 19851296. MCC, a new interacting protein for Scrib, is required for cell migration in epithelial cells. Arnaud C, et al. FEBS Lett, 2009 Jul 21. PMID 19555689. Mutated in colorectal cancer, a putative tumor suppressor for serrated colorectal cancer, selectively represses beta-catenin-dependent transcription. Fukuyama R, et al. Oncogene, 2008 Oct 9. PMID 18591935.