

## **MAD2L1 Antibody (monoclonal) (M01)**

Mouse monoclonal antibody raised against a full length recombinant MAD2L1.

Catalog # AT2758a

### **Specification**

---

#### **MAD2L1 Antibody (monoclonal) (M01) - Product Information**

Application	WB, E
Primary Accession	<a href="#">O13257</a>
Other Accession	<a href="#">BC000356</a>
Reactivity	Human
Host	mouse
Clonality	Monoclonal
Isotype	IgG2b kappa
Calculated MW	23510

#### **MAD2L1 Antibody (monoclonal) (M01) - Additional Information**

**Gene ID** 4085

##### **Other Names**

Mitotic spindle assembly checkpoint protein MAD2A, HsMAD2, Mitotic arrest deficient 2-like protein 1, MAD2-like protein 1, MAD2L1, MAD2

##### **Target/Specificity**

MAD2L1 (AAH00356, 1 a.a. ~ 205 a.a) full-length recombinant protein with GST tag. MW of the GST tag alone is 26 KDa.

##### **Dilution**

WB~~1:500~1000

##### **Format**

Clear, colorless solution in phosphate buffered saline, pH 7.2 .

##### **Storage**

Store at -20°C or lower. Aliquot to avoid repeated freezing and thawing.

##### **Precautions**

MAD2L1 Antibody (monoclonal) (M01) is for research use only and not for use in diagnostic or therapeutic procedures.

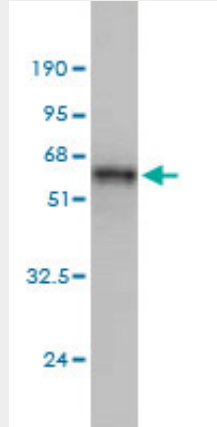
#### **MAD2L1 Antibody (monoclonal) (M01) - Protocols**

Provided below are standard protocols that you may find useful for product applications.

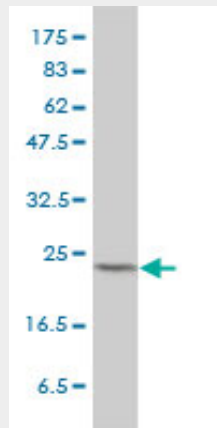
- [Western Blot](#)
- [Blocking Peptides](#)
- [Dot Blot](#)

- [Immunohistochemistry](#)
- [Immunofluorescence](#)
- [Immunoprecipitation](#)
- [Flow Cytometry](#)
- [Cell Culture](#)

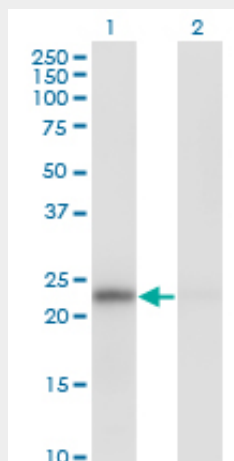
### MAD2L1 Antibody (monoclonal) (M01) - Images



Antibody Reactive Against Recombinant Protein. Western Blot detection against Immunogen (48.29 KDa) .

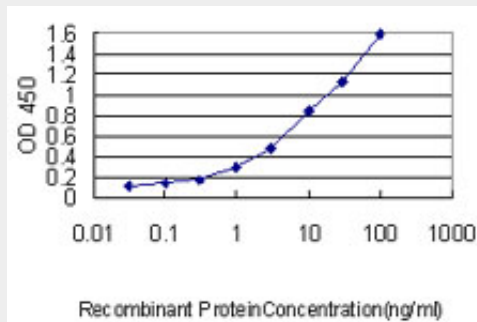


MAD2L1 monoclonal antibody (M01), clone 2E2-1D6 Western Blot analysis of MAD2L1 expression in HeLa ( (Cat # AT2758a )



Western Blot analysis of MAD2L1 expression in transfected 293T cell line by MAD2L1 monoclonal antibody (M01), clone 2E2-1D6.

Lane 1: MAD2L1 transfected lysate(23.5 KDa).  
Lane 2: Non-transfected lysate.



Detection limit for recombinant GST tagged MAD2L1 is approximately 0.03ng/ml as a capture antibody.

### **MAD2L1 Antibody (monoclonal) (M01) - Background**

MAD2L1 is a component of the mitotic spindle assembly checkpoint that prevents the onset of anaphase until all chromosomes are properly aligned at the metaphase plate. MAD2L1 is related to the MAD2L2 gene located on chromosome 1. A MAD2 pseudogene has been mapped to chromosome 14.

### **MAD2L1 Antibody (monoclonal) (M01) - References**

1. RED, a spindle pole-associated protein, is required for kinetochore localization of MAD1, mitotic progression, and activation of the spindle assembly checkpoint. Yeh PC, Yeh CC, Chen YC, Juang YL. J Biol Chem. 2012 Apr 6;287(15):11704-16. Epub 2012 Feb 18.