

**LILRB1 Antibody (monoclonal) (M01)****Mouse monoclonal antibody raised against a full length recombinant LILRB1.****Catalog # AT2715a****Specification**

---

**LILRB1 Antibody (monoclonal) (M01) - Product Information**

Application	<b>WB, E</b>
Primary Accession	<a href="#">O8NHL6</a>
Other Accession	<a href="#">BC015731</a>
Reactivity	<b>Human</b>
Host	<b>mouse</b>
Clonality	<b>Monoclonal</b>
Isotype	<b>IgG1 kappa</b>
Calculated MW	<b>70819</b>

**LILRB1 Antibody (monoclonal) (M01) - Additional Information****Gene ID** 10859**Other Names**

Leukocyte immunoglobulin-like receptor subfamily B member 1, LIR-1, Leukocyte immunoglobulin-like receptor 1, CD85 antigen-like family member J, Immunoglobulin-like transcript 2, ILT-2, Monocyte/macrophage immunoglobulin-like receptor 7, MIR-7, CD85j, LILRB1, ILT2, LIR1, MIR7

**Target/Specificity**

LILRB1 (AAH15731, 18 a.a. ~ 650 a.a) full-length recombinant protein with GST tag. MW of the GST tag alone is 26 KDa.

**Dilution**

WB~~1:500~1000

**Format**

Clear, colorless solution in phosphate buffered saline, pH 7.2 .

**Storage**

Store at -20°C or lower. Aliquot to avoid repeated freezing and thawing.

**Precautions**

LILRB1 Antibody (monoclonal) (M01) is for research use only and not for use in diagnostic or therapeutic procedures.

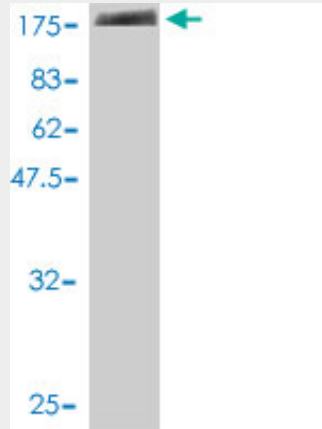
**LILRB1 Antibody (monoclonal) (M01) - Protocols**

Provided below are standard protocols that you may find useful for product applications.

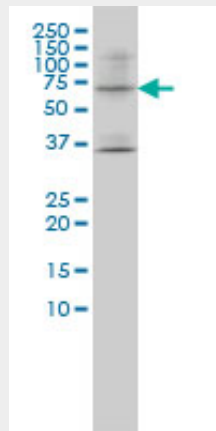
- [Western Blot](#)

- [Blocking Peptides](#)
- [Dot Blot](#)
- [Immunohistochemistry](#)
- [Immunofluorescence](#)
- [Immunoprecipitation](#)
- [Flow Cytometry](#)
- [Cell Culture](#)

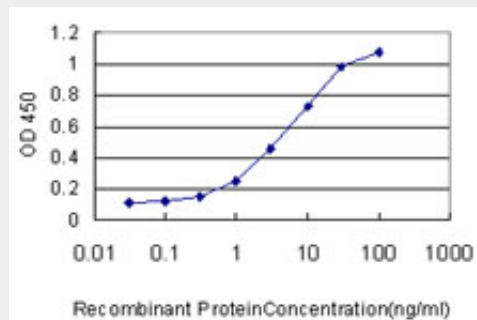
**LILRB1 Antibody (monoclonal) (M01) - Images**



Antibody Reactive Against Recombinant Protein. Western Blot detection against Immunogen (95.37 KDa) .



LILRB1 monoclonal antibody (M01), clone 3D3-1D12 Western Blot analysis of LILRB1 expression in SW-13 ( (Cat # AT2715a )



Detection limit for recombinant GST tagged LILRB1 is approximately 0.1ng/ml as a capture antibody.

### **LILRB1 Antibody (monoclonal) (M01) - Background**

This gene is a member of the leukocyte immunoglobulin-like receptor (LIR) family, which is found in a gene cluster at chromosomal region 19q13.4. The encoded protein belongs to the subfamily B class of LIR receptors which contain two or four extracellular immunoglobulin domains, a transmembrane domain, and two to four cytoplasmic immunoreceptor tyrosine-based inhibitory motifs (ITIMs). The receptor is expressed on immune cells where it binds to MHC class I molecules on antigen-presenting cells and transduces a negative signal that inhibits stimulation of an immune response. It is thought to control inflammatory responses and cytotoxicity to help focus the immune response and limit autoreactivity. Multiple transcript variants encoding different isoforms have been found for this gene.

### **LILRB1 Antibody (monoclonal) (M01) - References**

Variation at the NFATC2 Locus Increases the Risk of Thiazolinedinedione-Induced Edema in the Diabetes REduction Assessment with ramipril and rosiglitazone Medication (DREAM) Study. Bailey SD, et al. Diabetes Care, 2010 Jul 13. PMID 20628086. Promoter choice and translational repression determine cell type-specific cell surface density of the inhibitory receptor CD85j expressed on different hematopoietic lineages. Lamar DL, et al. Blood, 2010 Apr 22. PMID 20194892. Natural killer cell killing of acute myelogenous leukemia and acute lymphoblastic leukemia blasts by killer cell immunoglobulin-like receptor-negative natural killer cells after NKG2A and LIR-1 blockade. Godal R, et al. Biol Blood Marrow Transplant, 2010 May. PMID 20139023. Gene-centric association signals for lipids and apolipoproteins identified via the HumanCVD BeadChip. Talmud PJ, et al. Am J Hum Genet, 2009 Nov. PMID 19913121. ILT2/HLA-G interaction impairs NK-cell functions through the inhibition of the late but not the early events of the NK-cell activating synapse. Favier B, et al. FASEB J, 2010 Mar. PMID 19841038.