

LHX1 Antibody (monoclonal) (M01)

Mouse monoclonal antibody raised against a partial recombinant LHX1.

Catalog # AT2705a

Specification

LHX1 Antibody (monoclonal) (M01) - Product Information

Application	IF, IHC, E
Primary Accession	P48742
Other Accession	NM_005568
Reactivity	Human
Host	mouse
Clonality	Monoclonal
Isotype	IgG2a Kappa
Calculated MW	44808

LHX1 Antibody (monoclonal) (M01) - Additional Information

Gene ID 3975

Other Names

LIM/homeobox protein Lhx1, LIM homeobox protein 1, Homeobox protein Lim-1, hLim-1, LHX1, LIM-1, LIM1

Target/Specificity

LHX1 (NP_005559, 1 a.a. ~ 100 a.a) partial recombinant protein with GST tag. MW of the GST tag alone is 26 KDa.

Format

Clear, colorless solution in phosphate buffered saline, pH 7.2 .

Storage

Store at -20°C or lower. Aliquot to avoid repeated freezing and thawing.

Precautions

LHX1 Antibody (monoclonal) (M01) is for research use only and not for use in diagnostic or therapeutic procedures.

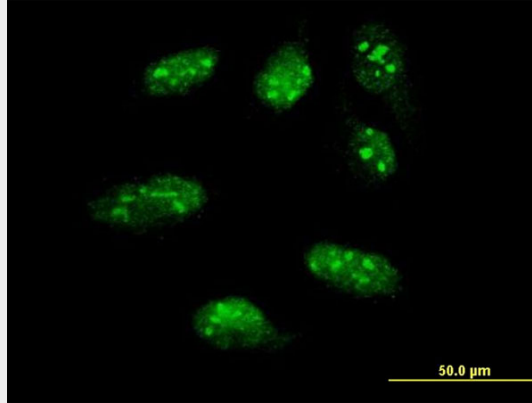
LHX1 Antibody (monoclonal) (M01) - Protocols

Provided below are standard protocols that you may find useful for product applications.

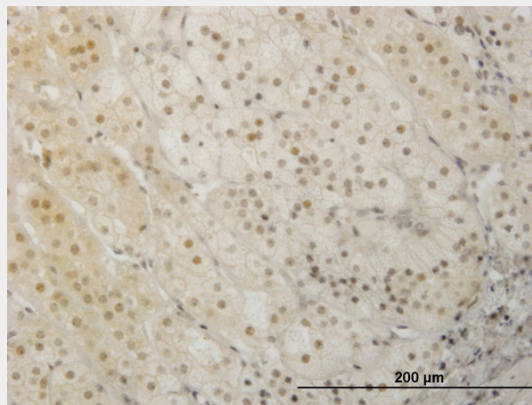
- [Western Blot](#)
- [Blocking Peptides](#)
- [Dot Blot](#)
- [Immunohistochemistry](#)
- [Immunofluorescence](#)
- [Immunoprecipitation](#)

- [Flow Cytometry](#)
- [Cell Culture](#)

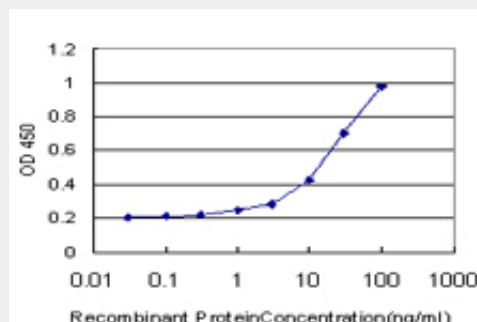
LHX1 Antibody (monoclonal) (M01) - Images



Immunofluorescence of monoclonal antibody to LHX1 on HeLa cell . [antibody concentration 10 ug/ml]



Immunoperoxidase of monoclonal antibody to LHX1 on formalin-fixed paraffin-embedded human adrenal gland. [antibody concentration 0.8 ug/ml]



Detection limit for recombinant GST tagged LHX1 is approximately 1ng/ml as a capture antibody.

LHX1 Antibody (monoclonal) (M01) - Background

This gene encodes a member of a large protein family which contains the LIM domain, a unique cysteine-rich zinc-binding domain. The encoded protein may function as a transcriptional regulator and be involved in control of differentiation and development of neural and lymphoid cells. A similar protein in mice is an essential regulator of the vertebrate head organizer.

LHX1 Antibody (monoclonal) (M01) - References

The role of genes in the development of Mullerian anomalies: where are we today? Christopoulos P, et al. *Obstet Gynecol Surv*, 2009 Nov. PMID 19849868. Transcriptional control of axonal guidance and sorting in dorsal interneurons by the Lim-HD proteins Lhx9 and Lhx1. Avraham O, et al. *Neural Dev*, 2009 Jun 19. PMID 19545367. Lim1 is essential for the correct laminar positioning of retinal horizontal cells. Poch RA, et al. *J Neurosci*, 2007 Dec 19. PMID 18094249. DNA sequence of human chromosome 17 and analysis of rearrangement in the human lineage. Zody MC, et al. *Nature*, 2006 Apr 20. PMID 16625196. The status, quality, and expansion of the NIH full-length cDNA project: the Mammalian Gene Collection (MGC). Gerhard DS, et al. *Genome Res*, 2004 Oct. PMID 15489334.