

LGALS1 Antibody (monoclonal) (M01)

Mouse monoclonal antibody raised against a full length recombinant LGALS1.

Catalog # AT2700a

Specification

LGALS1 Antibody (monoclonal) (M01) - Product Information

Application	IF, IP, WB, E
Primary Accession	P09382
Other Accession	BC001693
Reactivity	Human
Host	Mouse
Clonality	Monoclonal
Isotype	IgG2b Lambda
Calculated MW	14716

LGALS1 Antibody (monoclonal) (M01) - Additional Information

Gene ID 3956

Other Names

Galectin-1, Gal-1, 14 kDa laminin-binding protein, HLBP14, 14 kDa lectin, Beta-galactoside-binding lectin L-14-I, Galaptin, HBL, HPL, Lactose-binding lectin 1, Lectin galactoside-binding soluble 1, Putative MAPK-activating protein PM12, S-Lac lectin 1, LGALS1

Target/Specificity

LGALS1 (AAH01693, 1 a.a. ~ 135 a.a) full-length recombinant protein with GST tag. MW of the GST tag alone is 26 kDa.

Dilution

WB~~1:500~1000

Format

Clear, colorless solution in phosphate buffered saline, pH 7.2 .

Storage

Store at -20°C or lower. Aliquot to avoid repeated freezing and thawing.

Precautions

LGALS1 Antibody (monoclonal) (M01) is for research use only and not for use in diagnostic or therapeutic procedures.

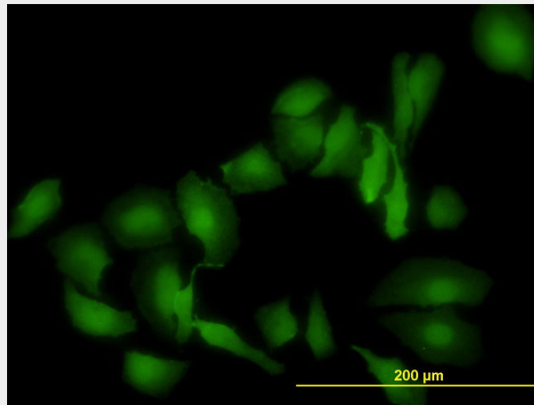
LGALS1 Antibody (monoclonal) (M01) - Protocols

Provided below are standard protocols that you may find useful for product applications.

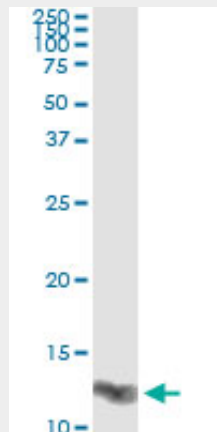
- [Western Blot](#)
- [Blocking Peptides](#)

- [Dot Blot](#)
- [Immunohistochemistry](#)
- [Immunofluorescence](#)
- [Immunoprecipitation](#)
- [Flow Cytometry](#)
- [Cell Culture](#)

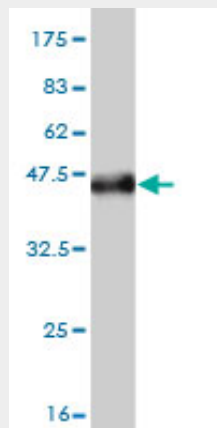
LGALS1 Antibody (monoclonal) (M01) - Images



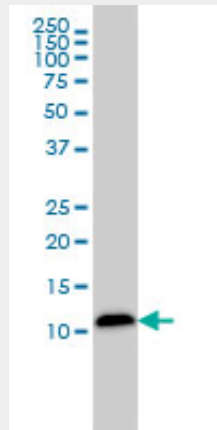
Immunofluorescence of monoclonal antibody to LGALS1 on HeLa cell. [antibody concentration 10 ug/ml]



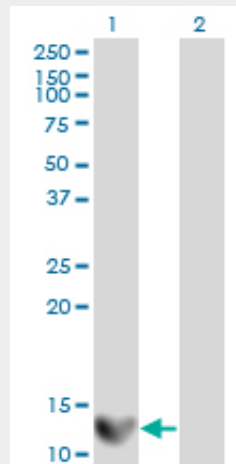
Immunoprecipitation of LGALS1 transfected lysate using anti-LGALS1 monoclonal antibody and Protein A Magnetic Bead ([U0007](#)), and immunoblotted with LGALS1 MaxPab rabbit polyclonal antibody.



Antibody Reactive Against Recombinant Protein. Western Blot detection against Immunogen (40.59 KDa) .

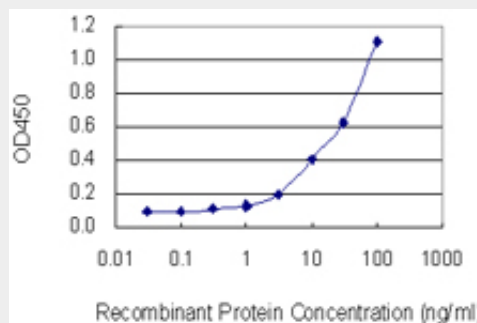


LGALS1 monoclonal antibody (M01), clone 1E8-1B2 Western Blot analysis of LGALS1 expression in HepG2 ((Cat # AT2700a)



Western Blot analysis of LGALS1 expression in transfected 293T cell line by LGALS1 monoclonal antibody (M01), clone 1E8-1B2.

Lane 1: LGALS1 transfected lysate(14.7 KDa).
 Lane 2: Non-transfected lysate.



Detection limit for recombinant GST tagged LGALS1 is 1 ng/ml as a capture antibody.

LGALS1 Antibody (monoclonal) (M01) - Background

The galectins are a family of beta-galactoside-binding proteins implicated in modulating cell-cell

and cell-matrix interactions. This gene product may act as an autocrine negative growth factor that regulates cell proliferation.

LGALS1 Antibody (monoclonal) (M01) - References

1. Galectin-1 and Galectin-3 Mediate Protocadherin-24-Dependent Membrane Localization of β -catenin in Colon Cancer Cell Line HCT116. Ose R, Ohara O, Nagase T. *Current Chemical Genomics*, 2012, 6, (Suppl 1-M3) 18-262. Quantitative and temporal proteome analysis of butyrate-treated colorectal cancer cells. Tan HT, Tan S, Lin Q, Lim TK, Hew CL, Chung MC. *Mol Cell Proteomics*. 2008 Jun;7(6):1174-85. Epub 2008 Mar 14.