

**LDHAL6B Antibody (monoclonal) (M01)**

Mouse monoclonal antibody raised against a partial recombinant LDHAL6B.

Catalog # AT2688a

**Specification**

---

**LDHAL6B Antibody (monoclonal) (M01) - Product Information**

Application	WB, E
Primary Accession	<a href="#">O9BYZ2</a>
Other Accession	<a href="#">NM_033195</a>
Reactivity	Human
Host	mouse
Clonality	Monoclonal
Isotype	IgG2b Kappa
Calculated MW	41943

**LDHAL6B Antibody (monoclonal) (M01) - Additional Information****Gene ID** 92483**Other Names**

L-lactate dehydrogenase A-like 6B, LDHAL6B, LDHAL6, LDHL

**Target/Specificity**

LDHAL6B (NP\_005497, 282 a.a. ~ 381 a.a) partial recombinant protein with GST tag. MW of the GST tag alone is 26 KDa.

**Dilution**

WB~~1:500~1000

**Format**

Clear, colorless solution in phosphate buffered saline, pH 7.2 .

**Storage**

Store at -20°C or lower. Aliquot to avoid repeated freezing and thawing.

**Precautions**

LDHAL6B Antibody (monoclonal) (M01) is for research use only and not for use in diagnostic or therapeutic procedures.

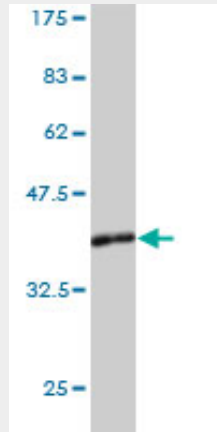
**LDHAL6B Antibody (monoclonal) (M01) - Protocols**

Provided below are standard protocols that you may find useful for product applications.

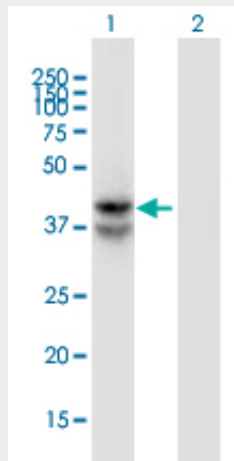
- [Western Blot](#)
- [Blocking Peptides](#)
- [Dot Blot](#)
- [Immunohistochemistry](#)

- [Immunofluorescence](#)
- [Immunoprecipitation](#)
- [Flow Cytometry](#)
- [Cell Culture](#)

**LDHAL6B Antibody (monoclonal) (M01) - Images**

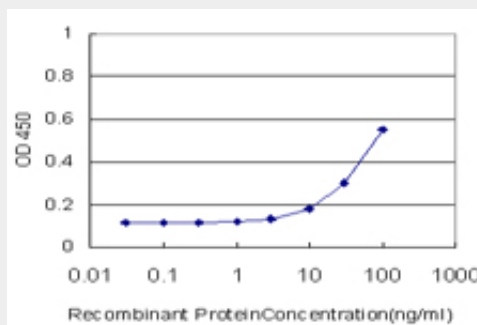


Antibody Reactive Against Recombinant Protein. Western Blot detection against Immunogen (36.74 KDa) .



Western Blot analysis of LDHAL6B expression in transfected 293T cell line by LDHAL6B monoclonal antibody (M01), clone 1A3.

Lane 1: LDHAL6B transfected lysate (Predicted MW: 42 KDa).  
 Lane 2: Non-transfected lysate.



Detection limit for recombinant GST tagged LDHAL6B is approximately 3ng/ml as a capture antibody.