

**LASS6 Antibody (monoclonal) (M02)**

Mouse monoclonal antibody raised against a partial recombinant LASS6.

Catalog # AT2678a

**Specification**

---

**LASS6 Antibody (monoclonal) (M02) - Product Information**

Application	WB, E
Primary Accession	<a href="#">O6ZMG9</a>
Other Accession	<a href="#">NM_203463</a>
Reactivity	Human, Rat
Host	mouse
Clonality	Monoclonal
Isotype	IgG2b Kappa
Calculated MW	44890

**LASS6 Antibody (monoclonal) (M02) - Additional Information**

Gene ID 253782

**Other Names**

Ceramide synthase 6, CerS6, LAG1 longevity assurance homolog 6, CERS6, LASS6

**Target/Specificity**

LASS6 (NP\_982288, 62 a.a. ~ 131 a.a) partial recombinant protein with GST tag. MW of the GST tag alone is 26 KDa.

**Dilution**

WB~~1:500~1000

**Format**

Clear, colorless solution in phosphate buffered saline, pH 7.2 .

**Storage**

Store at -20°C or lower. Aliquot to avoid repeated freezing and thawing.

**Precautions**

LASS6 Antibody (monoclonal) (M02) is for research use only and not for use in diagnostic or therapeutic procedures.

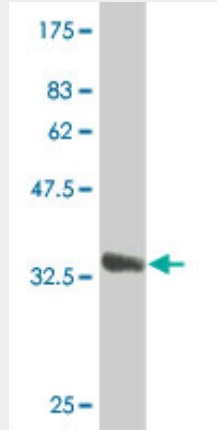
**LASS6 Antibody (monoclonal) (M02) - Protocols**

Provided below are standard protocols that you may find useful for product applications.

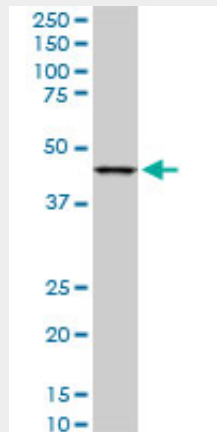
- [Western Blot](#)
- [Blocking Peptides](#)
- [Dot Blot](#)
- [Immunohistochemistry](#)

- [Immunofluorescence](#)
- [Immunoprecipitation](#)
- [Flow Cytometry](#)
- [Cell Culture](#)

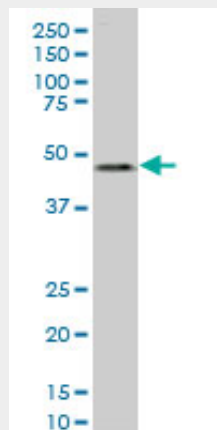
### LASS6 Antibody (monoclonal) (M02) - Images



Antibody Reactive Against Recombinant Protein. Western Blot detection against Immunogen (33.44 KDa) .

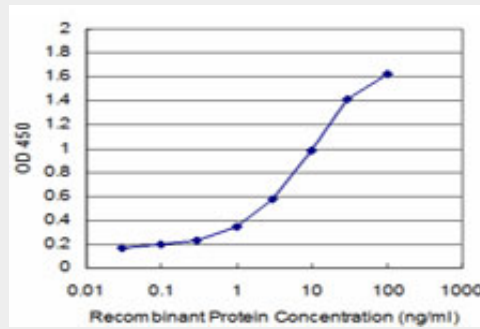


LASS6 monoclonal antibody (M02), clone 6B8. Western Blot analysis of LASS6 expression in PC-12 (Cat # AT2678a )



LASS6 monoclonal antibody (M02), clone 6B8 Western Blot analysis of LASS6 expression in Jurkat

( (Cat # AT2678a )



Detection limit for recombinant GST tagged LASS6 is approximately 0.1ng/ml as a capture antibody.

### **LASS6 Antibody (monoclonal) (M02) - References**

Ceramide synthases 2, 5, and 6 confer distinct roles in radiation-induced apoptosis in HeLa cells. Mesicek J, et al. *Cell Signal*, 2010 Sep. PMID 20406683. Personalized smoking cessation: interactions between nicotine dose, dependence and quit-success genotype score. Rose JE, et al. *Mol Med*, 2010 Jul-Aug. PMID 20379614. PERK-dependent regulation of ceramide synthase 6 and thioredoxin play a key role in mda-7/IL-24-induced killing of primary human glioblastoma multiforme cells. Yacoub A, et al. *Cancer Res*, 2010 Feb 1. PMID 20103619. Increased ceramide synthase 2 and 6 mRNA levels in breast cancer tissues and correlation with sphingosine kinase expression. Erez-Roman R, et al. *Biochem Biophys Res Commun*, 2010 Jan 1. PMID 19912991. Antiapoptotic roles of ceramide-synthase-6-generated C16-ceramide via selective regulation of the ATF6/CHOP arm of ER-stress-response pathways. Senkal CE, et al. *FASEB J*, 2010 Jan. PMID 19723703.