

## **LASP1 Antibody (monoclonal) (M05)**

Mouse monoclonal antibody raised against a full-length recombinant LASP1.

Catalog # AT2673a

### **Specification**

---

#### **LASP1 Antibody (monoclonal) (M05) - Product Information**

Application	WB
Primary Accession	<a href="#">O14847</a>
Other Accession	<a href="#">BC012460</a>
Reactivity	Human
Host	mouse
Clonality	Monoclonal
Isotype	IgG2a Kappa
Calculated MW	29717

#### **LASP1 Antibody (monoclonal) (M05) - Additional Information**

**Gene ID** 3927

##### **Other Names**

LIM and SH3 domain protein 1, LASP-1, Metastatic lymph node gene 50 protein, MLN 50, LASP1, MLN50

##### **Target/Specificity**

LASP1 (AAH12460, 1 a.a. ~ 261 a.a) full-length recombinant protein with GST tag. MW of the GST tag alone is 26 KDa.

##### **Dilution**

WB~~1:500~1000

##### **Format**

Clear, colorless solution in phosphate buffered saline, pH 7.2 .

##### **Storage**

Store at -20°C or lower. Aliquot to avoid repeated freezing and thawing.

##### **Precautions**

LASP1 Antibody (monoclonal) (M05) is for research use only and not for use in diagnostic or therapeutic procedures.

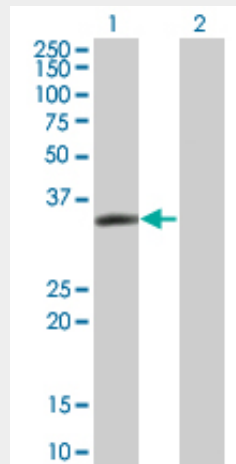
#### **LASP1 Antibody (monoclonal) (M05) - Protocols**

Provided below are standard protocols that you may find useful for product applications.

- [Western Blot](#)
- [Blocking Peptides](#)
- [Dot Blot](#)

- [Immunohistochemistry](#)
- [Immunofluorescence](#)
- [Immunoprecipitation](#)
- [Flow Cytometry](#)
- [Cell Culture](#)

#### **LASP1 Antibody (monoclonal) (M05) - Images**



Western Blot analysis of LASP1 expression in transfected 293T cell line by LASP1 monoclonal antibody (M05), clone 4F5.

Lane 1: LASP1 transfected lysate(29.7 KDa).

Lane 2: Non-transfected lysate.

#### **LASP1 Antibody (monoclonal) (M05) - Background**

This gene encodes a member of a LIM protein subfamily characterized by a LIM motif and a domain of Src homology region 3. The encoded protein functions as an actin-binding protein and possibly in cytoskeletal organization.

#### **LASP1 Antibody (monoclonal) (M05) - References**

Nuclear localisation of LASP-1 correlates with poor long-term survival in female breast cancer. Frietsch JJ, et al. *Br J Cancer*, 2010 May 25. PMID 20461080. Personalized smoking cessation: interactions between nicotine dose, dependence and quit-success genotype score. Rose JE, et al. *Mol Med*, 2010 Jul-Aug. PMID 20379614. Integrin-dependent translocation of LASP-1 to the cytoskeleton of activated platelets correlates with LASP-1 phosphorylation at tyrosine 171 by Src-kinase. Traenka J, et al. *Thromb Haemost*, 2009 Sep. PMID 19718473. Proteomic identification of LASP-1 down-regulation after RNAi urokinase silencing in human hepatocellular carcinoma cells. Salvi A, et al. *Neoplasia*, 2009 Feb. PMID 19177205. LIM and SH3 protein 1 (Lasp1) is a novel p53 transcriptional target involved in hepatocellular carcinoma. Wang B, et al. *J Hepatol*, 2009 Mar. PMID 19155088.