

LAMB3 Antibody (monoclonal) (M01)

Mouse monoclonal antibody raised against a partial recombinant LAMB3.

Catalog # AT2670a

Specification

LAMB3 Antibody (monoclonal) (M01) - Product Information

Application	IF, WB, E
Primary Accession	O13751
Other Accession	NM_000228
Reactivity	Human
Host	Mouse
Clonality	Monoclonal
Isotype	IgG1 Kappa
Calculated MW	129572

LAMB3 Antibody (monoclonal) (M01) - Additional Information

Gene ID 3914

Other Names

Laminin subunit beta-3, Epiligrin subunit bata, Kalinin B1 chain, Kalinin subunit beta, Laminin B1k chain, Laminin-5 subunit beta, Nicein subunit beta, LAMB3, LAMNB1

Target/Specificity

LAMB3 (NP_000219, 1064 a.a. ~ 1171 a.a) partial recombinant protein with GST tag. MW of the GST tag alone is 26 KDa.

Dilution

WB~~1:500~1000

Format

Clear, colorless solution in phosphate buffered saline, pH 7.2 .

Storage

Store at -20°C or lower. Aliquot to avoid repeated freezing and thawing.

Precautions

LAMB3 Antibody (monoclonal) (M01) is for research use only and not for use in diagnostic or therapeutic procedures.

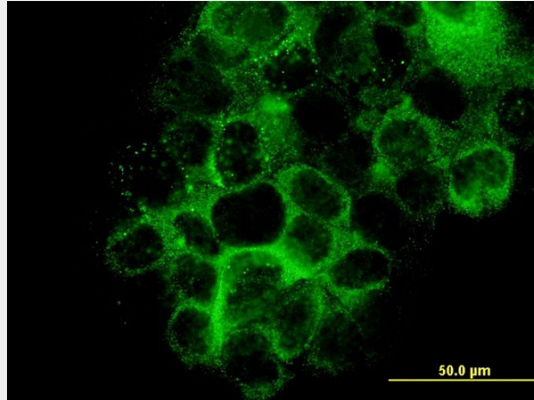
LAMB3 Antibody (monoclonal) (M01) - Protocols

Provided below are standard protocols that you may find useful for product applications.

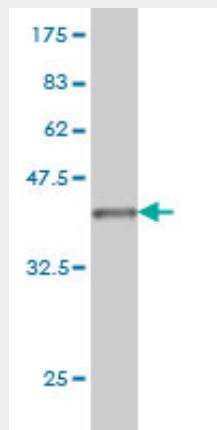
- [Western Blot](#)
- [Blocking Peptides](#)
- [Dot Blot](#)

- [Immunohistochemistry](#)
- [Immunofluorescence](#)
- [Immunoprecipitation](#)
- [Flow Cytometry](#)
- [Cell Culture](#)

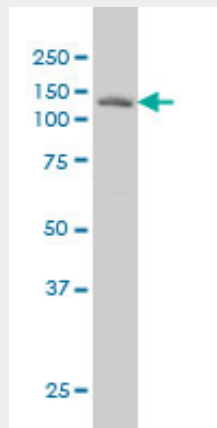
LAMB3 Antibody (monoclonal) (M01) - Images



Immunofluorescence of monoclonal antibody to LAMB3 on A-431 cell. [antibody concentration 10 ug/ml]

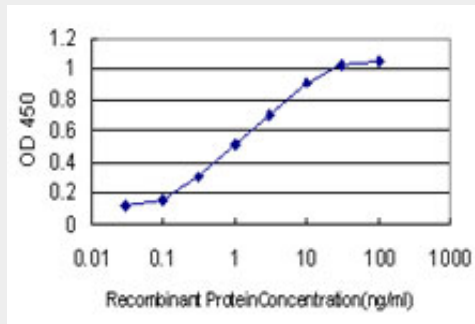


Antibody Reactive Against Recombinant Protein. Western Blot detection against Immunogen (37.62 KDa) .



LAMB3 monoclonal antibody (M01), clone 2G10 Western Blot analysis of LAMB3 expression in

A-431 ((Cat # AT2670a)



Detection limit for recombinant GST tagged LAMB3 is approximately 0.03ng/ml as a capture antibody.

LAMB3 Antibody (monoclonal) (M01) - Background

The product encoded by this gene is a laminin that belongs to a family of basement membrane proteins. This protein is a beta subunit laminin, which together with an alpha and a gamma subunit, forms laminin-5. Mutations in this gene cause epidermolysis bullosa junctional Herlitz type, and generalized atrophic benign epidermolysis bullosa, diseases that are characterized by blistering of the skin. Multiple alternatively spliced transcript variants that encode the same protein have been found for this gene.

LAMB3 Antibody (monoclonal) (M01) - References

1. Clinical significance of LAMB3 and COL7A1 mRNA in esophageal squamous cell carcinoma. Kita Y, Mimori K, Tanaka F, Matsumoto T, Haraguchi N, Ishikawa K, Matsuzaki S, Fukuyoshi Y, Inoue H, Natsugoe S, Aikou T, Mori M. *Eur J Surg Oncol.* 2009 Jan;35(1):52-58. Epub 2008 Mar 10.