

**KRT20 Antibody (monoclonal) (M01)**

Mouse monoclonal antibody raised against a full length recombinant KRT20.

Catalog # AT2657a

**Specification**

---

**KRT20 Antibody (monoclonal) (M01) - Product Information**

Application	IF, WB, IHC, E
Primary Accession	<a href="#">P35900</a>
Other Accession	<a href="#">BC031559</a>
Reactivity	Human
Host	mouse
Clonality	Monoclonal
Isotype	IgG1 kappa
Calculated MW	48487

**KRT20 Antibody (monoclonal) (M01) - Additional Information****Gene ID** 54474**Other Names**

Keratin, type I cytoskeletal 20, Cytokeratin-20, CK-20, Keratin-20, K20, Protein IT, KRT20

**Target/Specificity**

KRT20 (AAH31559, 1 a.a. ~ 424 a.a) full-length recombinant protein with GST tag. MW of the GST tag alone is 26 KDa.

**Dilution**

WB~~1:500~1000

**Format**

Clear, colorless solution in phosphate buffered saline, pH 7.2 .

**Storage**

Store at -20°C or lower. Aliquot to avoid repeated freezing and thawing.

**Precautions**

KRT20 Antibody (monoclonal) (M01) is for research use only and not for use in diagnostic or therapeutic procedures.

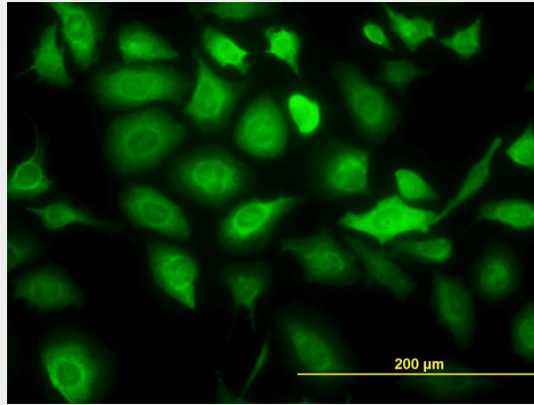
**KRT20 Antibody (monoclonal) (M01) - Protocols**

Provided below are standard protocols that you may find useful for product applications.

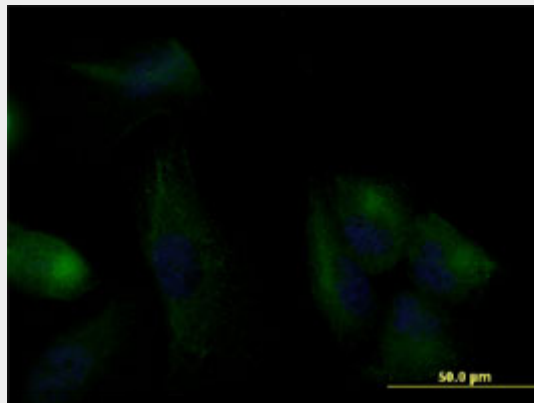
- [Western Blot](#)
- [Blocking Peptides](#)
- [Dot Blot](#)
- [Immunohistochemistry](#)

- [Immunofluorescence](#)
- [Immunoprecipitation](#)
- [Flow Cytometry](#)
- [Cell Culture](#)

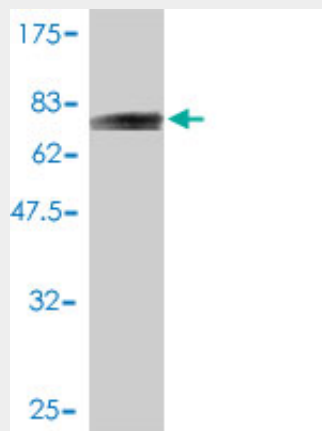
### KRT20 Antibody (monoclonal) (M01) - Images



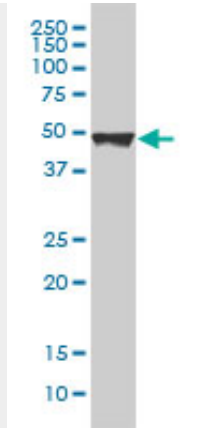
Immunofluorescence of monoclonal antibody to KRT20 on HeLa cell. [antibody concentration 10 ug/ml]



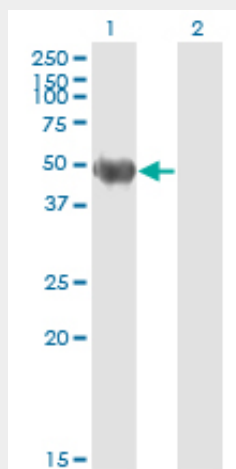
Immunofluorescence of monoclonal antibody to KRT20 on U-2 OS cell. [antibody concentration 10 ug/ml]



Antibody Reactive Against Recombinant Protein. Western Blot detection against Immunogen (72.38 KDa) .

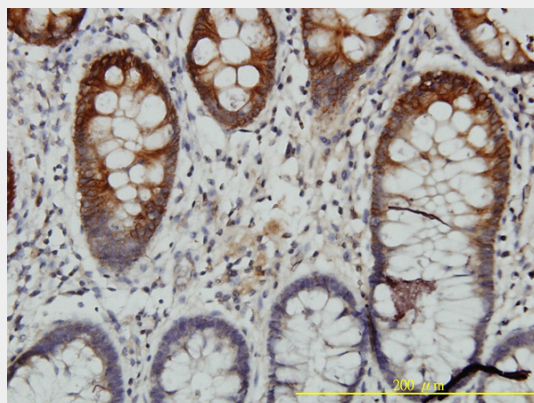


KRT20 monoclonal antibody (M01), clone 2G3-1C8 Western Blot analysis of KRT20 expression in A-431 ( Cat # AT2657a )

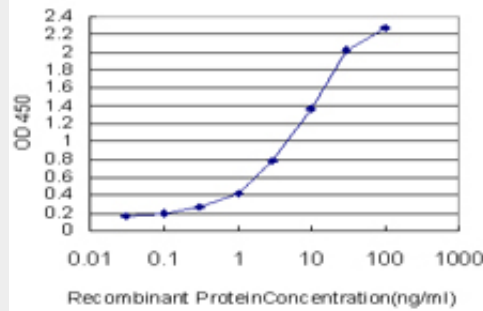


Western Blot analysis of KRT20 expression in transfected 293T cell line by KRT20 monoclonal antibody (M01), clone 2G3-1C8.

Lane 1: KRT20 transfected lysate(48.5 KDa).  
Lane 2: Non-transfected lysate.



Immunoperoxidase of monoclonal antibody to KRT20 on formalin-fixed paraffin-embedded human colon tissue. [antibody concentration 3 ug/ml]



Detection limit for recombinant GST tagged KRT20 is approximately 0.03ng/ml as a capture antibody.

### **KRT20 Antibody (monoclonal) (M01) - Background**

The protein encoded by this gene is a member of the keratin family. The keratins are intermediate filament proteins responsible for the structural integrity of epithelial cells and are subdivided into cytokeratins and hair keratins. The type I cytokeratins consist of acidic proteins which are arranged in pairs of heterotypic keratin chains. This cytokeratin is a major cellular protein of mature enterocytes and goblet cells and is specifically expressed in the gastric and intestinal mucosa. The type I cytokeratin genes are clustered in a region of chromosome 17q12-q21.

### **KRT20 Antibody (monoclonal) (M01) - References**

The clinical implications of MMP-11 and CK-20 expression in human breast cancer. Cheng CW, et al. Clin Chim Acta, 2010 Feb. PMID 19914229. Identification of 15 loci influencing height in a Korean population. Kim JJ, et al. J Hum Genet, 2010 Jan. PMID 19893584. Aberrant expression of class III beta-tubulin in basal cell carcinoma of the skin. Ishida M, et al. Oncol Rep, 2009 Oct. PMID 19724850. [Association of CK20 expression with the progression, metastasis and prognosis of breast cancer] Wang SM, et al. Xi Bao Yu Fen Zi Mian Yi Xue Za Zhi, 2009 Aug. PMID 19664394. Detection of epithelial cells by RT-PCR targeting CEA, CK20, and TEM-8 in colorectal carcinoma patients using OncoQuick density gradient centrifugation system. Lagoudianakis EE, et al. J Surg Res, 2009 Aug. PMID 19645077.