

KRT17 Antibody (monoclonal) (M02)

Mouse monoclonal antibody raised against a full length recombinant KRT17.

Catalog # AT2654a

Specification

KRT17 Antibody (monoclonal) (M02) - Product Information

Application	WB, IHC, E
Primary Accession	Q04695
Other Accession	BC000159
Reactivity	Human
Host	mouse
Clonality	Monoclonal
Isotype	IgG1 Kappa
Calculated MW	48106

KRT17 Antibody (monoclonal) (M02) - Additional Information

Gene ID 3872

Other Names

Keratin, type I cytoskeletal 17, Cytokeratin-17, CK-17, Keratin-17, K17, KRT17

Target/Specificity

KRT17 (AAH00159, 1 a.a. ~ 432 a.a) full-length recombinant protein with GST tag. MW of the GST tag alone is 26 KDa.

Dilution

WB~~1:500~1000

Format

Clear, colorless solution in phosphate buffered saline, pH 7.2 .

Storage

Store at -20°C or lower. Aliquot to avoid repeated freezing and thawing.

Precautions

KRT17 Antibody (monoclonal) (M02) is for research use only and not for use in diagnostic or therapeutic procedures.

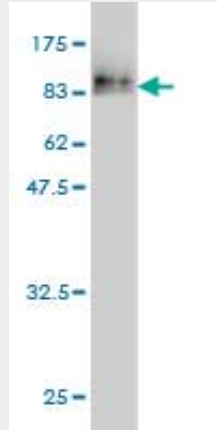
KRT17 Antibody (monoclonal) (M02) - Protocols

Provided below are standard protocols that you may find useful for product applications.

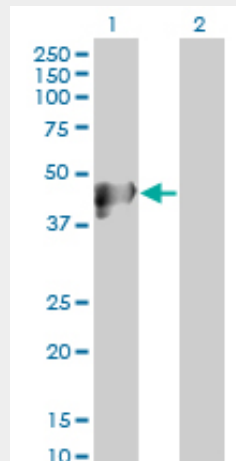
- [Western Blot](#)
- [Blocking Peptides](#)
- [Dot Blot](#)
- [Immunohistochemistry](#)

- [Immunofluorescence](#)
- [Immunoprecipitation](#)
- [Flow Cytometry](#)
- [Cell Culture](#)

KRT17 Antibody (monoclonal) (M02) - Images

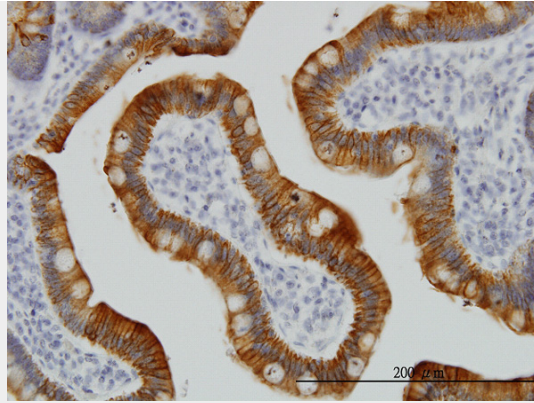


Antibody Reactive Against Recombinant Protein. Western Blot detection against Immunogen (73.26 KDa) .

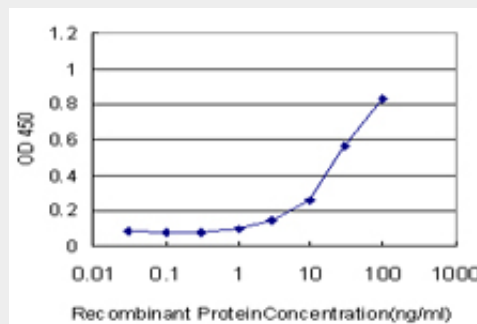


Western Blot analysis of KRT17 expression in transfected 293T cell line by KRT17 monoclonal antibody (M02), clone 2D10.

Lane 1: KRT17 transfected lysate (48.1 KDa).
Lane 2: Non-transfected lysate.



Immunoperoxidase of monoclonal antibody to KRT17 on formalin-fixed paraffin-embedded human small Intestine. [antibody concentration 3 ug/ml]



Detection limit for recombinant GST tagged KRT17 is approximately 3ng/ml as a capture antibody.

KRT17 Antibody (monoclonal) (M02) - Background

This gene encodes the type I intermediate filament chain keratin 17, expressed in nail bed, hair follicle, sebaceous glands, and other epidermal appendages. Mutations in this gene lead to Jackson-Lawler type pachyonychia congenita and steatocystoma multiplex.

KRT17 Antibody (monoclonal) (M02) - References

1. Molecular classification of nonsmall-cell lung cancer using a 4-protein quantitative assay. Anagnostou VK, Dimou AT, Botsis T, Killiam EJ, Gustavson MD, Homer RJ, Boffa D, Zolota V, Dougenis D, Tanoue L, Gettinger SN, Detterbeck FC, Syrigos KN, Bepler G, Rimm DL. *Cancer*. 2012 Mar 15;118(6):1607-18. doi: 10.1002/cncr.26450. Epub 2011 Aug 25.