

KRT17 Antibody (monoclonal) (M01)

Mouse monoclonal antibody raised against a full length recombinant KRT17.

Catalog # AT2653a

Specification

KRT17 Antibody (monoclonal) (M01) - Product Information

Application	IF, IP, WB, IHC
Primary Accession	Q04695
Other Accession	BC000159
Reactivity	Human
Host	mouse
Clonality	Monoclonal
Isotype	IgG1 kappa
Calculated MW	48106

KRT17 Antibody (monoclonal) (M01) - Additional Information**Gene ID** 3872**Other Names**

Keratin, type I cytoskeletal 17, Cytokeratin-17, CK-17, Keratin-17, K17, KRT17

Target/Specificity

KRT17 (AAH00159, 1 a.a. ~ 432 a.a) full-length recombinant protein with GST tag. MW of the GST tag alone is 26 KDa.

Dilution

WB~~1:500~1000

Format

Clear, colorless solution in phosphate buffered saline, pH 7.2 .

Storage

Store at -20°C or lower. Aliquot to avoid repeated freezing and thawing.

Precautions

KRT17 Antibody (monoclonal) (M01) is for research use only and not for use in diagnostic or therapeutic procedures.

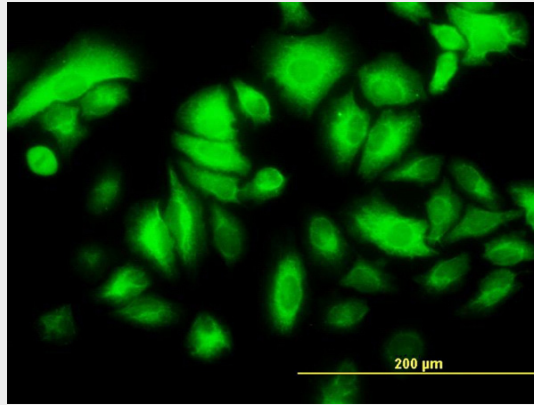
KRT17 Antibody (monoclonal) (M01) - Protocols

Provided below are standard protocols that you may find useful for product applications.

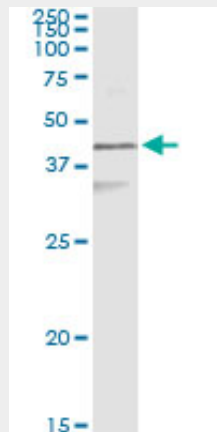
- [Western Blot](#)
- [Blocking Peptides](#)
- [Dot Blot](#)
- [Immunohistochemistry](#)

- [Immunofluorescence](#)
- [Immunoprecipitation](#)
- [Flow Cytometry](#)
- [Cell Culture](#)

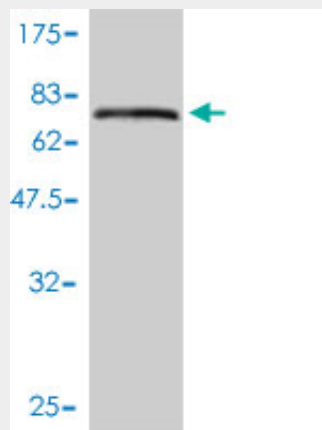
KRT17 Antibody (monoclonal) (M01) - Images



Immunofluorescence of monoclonal antibody to KRT17 on HeLa cell. [antibody concentration 25 ug/ml]

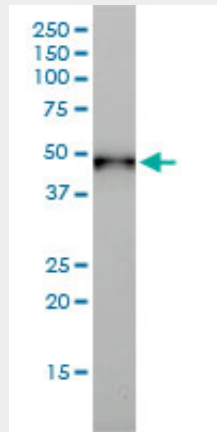


Immunoprecipitation of KRT17 transfected lysate using anti-KRT17 monoclonal antibody and Protein A Magnetic Bead ([U0007](#)), and immunoblotted with KRT17 MaxPab rabbit polyclonal antibody.

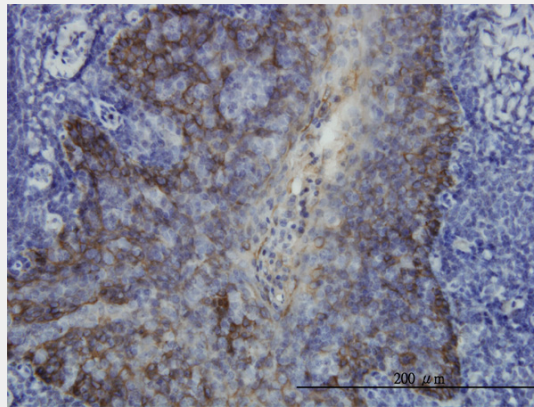


Antibody Reactive Against Recombinant Protein. Western Blot detection against Immunogen

(73.26 KDa) .



KRT17 monoclonal antibody (M01), clone 2D4-1G9 Western Blot analysis of KRT17 expression in A-431 ((Cat # AT2653a)



Immunoperoxidase of monoclonal antibody to KRT17 on formalin-fixed paraffin-embedded human tonsil. [antibody concentration 3 ug/ml]

KRT17 Antibody (monoclonal) (M01) - Background

This gene encodes the type I intermediate filament chain keratin 17, expressed in nail bed, hair follicle, sebaceous glands, and other epidermal appendages. Mutations in this gene lead to Jackson-Lawler type pachyonychia congenita and steatocystoma multiplex.

KRT17 Antibody (monoclonal) (M01) - References

1. Novel markers for differentiation of lobular and ductal invasive breast carcinomas by laser microdissection and microarray analysis. Turashvili G, Bouchal J, Baumforth K, Wei W, Dziechciarkova M, Ehrmann J, Klein J, Fridman E, Skarda J, Srovnal J, Hajduch M, Murray P, Kolar Z. BMC Cancer. 2007 Mar 27;7:55.