

## **KRAS Antibody (monoclonal) (M01)**

Mouse monoclonal antibody raised against a full length recombinant KRAS.

Catalog # AT2650a

### **Specification**

---

#### **KRAS Antibody (monoclonal) (M01) - Product Information**

Application	IF, WB, E
Primary Accession	<a href="#">P01116</a>
Other Accession	<a href="#">BC013572</a>
Reactivity	Human
Host	Mouse
Clonality	Monoclonal
Isotype	IgG1 Kappa
Calculated MW	21656

#### **KRAS Antibody (monoclonal) (M01) - Additional Information**

**Gene ID** 3845

##### **Other Names**

GTPase KRas, K-Ras 2, Ki-Ras, c-K-ras, c-Ki-ras, GTPase KRas, N-terminally processed, KRAS, KRAS2, RASK2

##### **Target/Specificity**

KRAS (AAH13572, 1 a.a. ~ 188 a.a) full-length recombinant protein with GST tag. MW of the GST tag alone is 26 KDa.

##### **Dilution**

WB~~1:500~1000

##### **Format**

Clear, colorless solution in phosphate buffered saline, pH 7.2 .

##### **Storage**

Store at -20°C or lower. Aliquot to avoid repeated freezing and thawing.

##### **Precautions**

KRAS Antibody (monoclonal) (M01) is for research use only and not for use in diagnostic or therapeutic procedures.

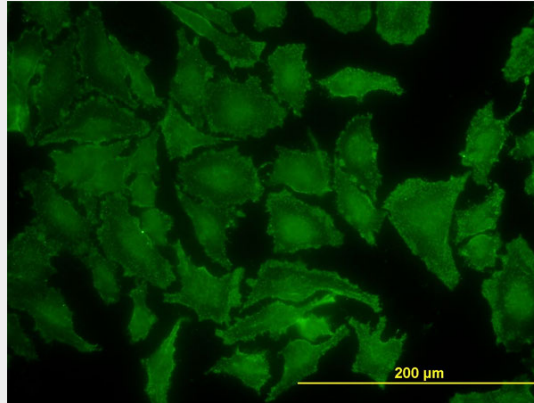
#### **KRAS Antibody (monoclonal) (M01) - Protocols**

Provided below are standard protocols that you may find useful for product applications.

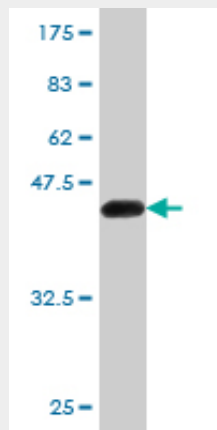
- [Western Blot](#)
- [Blocking Peptides](#)
- [Dot Blot](#)

- [Immunohistochemistry](#)
- [Immunofluorescence](#)
- [Immunoprecipitation](#)
- [Flow Cytometry](#)
- [Cell Culture](#)

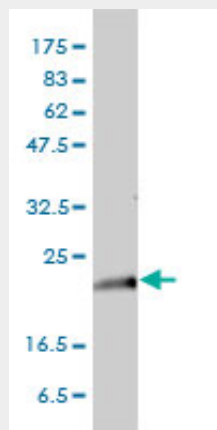
### KRAS Antibody (monoclonal) (M01) - Images



Immunofluorescence of monoclonal antibody to KRAS on HeLa cell. [antibody concentration 10 ug/ml]

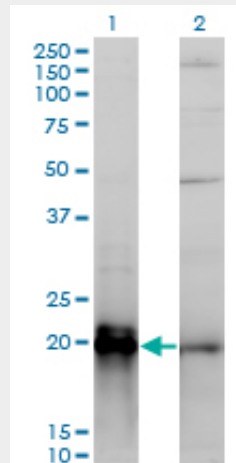


Antibody Reactive Against Recombinant Protein. Western Blot detection against Immunogen (46.42 KDa) .



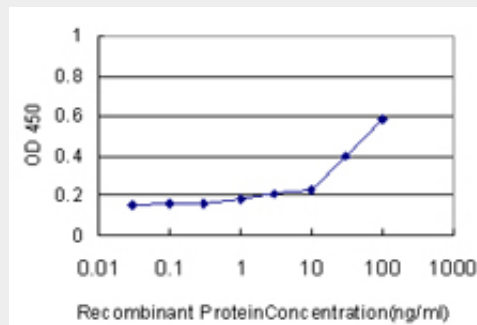
KRAS monoclonal antibody (M01), clone 3B10-2F2 Western Blot analysis of KRAS expression in

HeLa ( (Cat # AT2650a )



Western Blot analysis of KRAS expression in transfected 293T cell line by KRAS monoclonal antibody (M01), clone 3B10-2F2.

Lane 1: KRAS transfected lysate (21 KDa).  
Lane 2: Non-transfected lysate.



Detection limit for recombinant GST tagged KRAS is approximately 1ng/ml as a capture antibody.

### **KRAS Antibody (monoclonal) (M01) - Background**

This gene, a Kirsten ras oncogene homolog from the mammalian ras gene family, encodes a protein that is a member of the small GTPase superfamily. A single amino acid substitution is responsible for an activating mutation. The transforming protein that results is implicated in various malignancies, including lung adenocarcinoma, mucinous adenoma, ductal carcinoma of the pancreas and colorectal carcinoma. Alternative splicing leads to variants encoding two isoforms that differ in the C-terminal region.

### **KRAS Antibody (monoclonal) (M01) - References**

1. Evidence for aldosterone-dependent growth of renal cell carcinoma. King S, Bray S, Galbraith S, Christie L, Fleming S. *Int J Exp Pathol*. 2014 May 7. doi: 10.1111/iep.12074.  
2. KRAS gene amplification in colorectal cancer and impact on response to EGFR-targeted therapy. Valtorta E, Misale S, Sartore-Bianchi A, Nagtegaal ID, Paraf F, Lauricella C, Dimartino V, Hobor S, Jacobs B, Ercolani C, Lamba S, Scala E, Veronese S, Laurent-Puig P, Siena S, Tejpar S, Mottolese M, Punt CJ, Gambacorta M, Bardelli A, Di Nicolantonio F. *Int J Cancer*. 2013 Feb 12. doi: 10.1002/ijc.28106.  
3. Analysis of k-ras nuclear expression in fibroblasts and mesangial cells. Fuentes-Calvo I, Blazquez-Medela AM, Santos E, Lopez-Novoa JM, Martinez-Salgado C. *PLoS One*. 2010 Jan 14;5(1):e8703.

### **KRAS Antibody (monoclonal) (M01) - Citations**

- [p66\(Shc\) restrains Ras hyperactivation and suppresses metastatic behavior.](#)