

## **KNTC2 Antibody (monoclonal) (M01)**

Mouse monoclonal antibody raised against a partial recombinant KNTC2.

Catalog # AT2646a

### **Specification**

---

#### **KNTC2 Antibody (monoclonal) (M01) - Product Information**

Application	<b>WB, E</b>
Primary Accession	<a href="#">O14777</a>
Other Accession	<a href="#">BC035617</a>
Reactivity	<b>Human</b>
Host	<b>mouse</b>
Clonality	<b>Monoclonal</b>
Isotype	<b>IgG1 Kappa</b>
Calculated MW	<b>73913</b>

#### **KNTC2 Antibody (monoclonal) (M01) - Additional Information**

**Gene ID** 10403

##### **Other Names**

Kinetochores protein NDC80 homolog, Highly expressed in cancer protein, Kinetochores protein Hec1, HsHec1, Kinetochores-associated protein 2, Retinoblastoma-associated protein HEC, NDC80, HEC, HEC1, KNTC2

##### **Target/Specificity**

KNTC2 (AAH35617, 545 a.a. ~ 642 a.a) partial recombinant protein with GST tag. MW of the GST tag alone is 26 KDa.

##### **Dilution**

WB~~1:500~1000

##### **Format**

Clear, colorless solution in phosphate buffered saline, pH 7.2 .

##### **Storage**

Store at -20°C or lower. Aliquot to avoid repeated freezing and thawing.

##### **Precautions**

KNTC2 Antibody (monoclonal) (M01) is for research use only and not for use in diagnostic or therapeutic procedures.

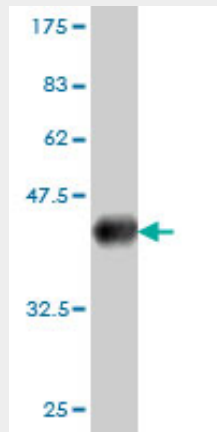
#### **KNTC2 Antibody (monoclonal) (M01) - Protocols**

Provided below are standard protocols that you may find useful for product applications.

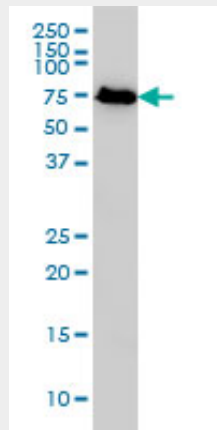
- [Western Blot](#)
- [Blocking Peptides](#)

- [Dot Blot](#)
- [Immunohistochemistry](#)
- [Immunofluorescence](#)
- [Immunoprecipitation](#)
- [Flow Cytometry](#)
- [Cell Culture](#)

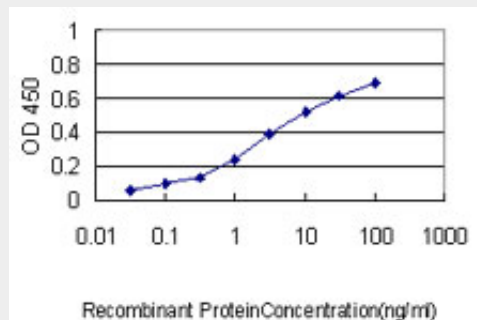
**KNTC2 Antibody (monoclonal) (M01) - Images**



Antibody Reactive Against Recombinant Protein. Western Blot detection against Immunogen (36.19 KDa) .



KNTC2 monoclonal antibody (M01), clone 1A10 Western Blot analysis of KNTC2 expression in Hela S3 NE ( (Cat # AT2646a )



Detection limit for recombinant GST tagged KNTC2 is approximately 0.1ng/ml as a capture antibody.

**KNTC2 Antibody (monoclonal) (M01) - Background**

HEC is one of several proteins involved in spindle checkpoint signaling. This surveillance mechanism assures correct segregation of chromosomes during cell division by detecting unaligned chromosomes and causing prometaphase arrest until the proper bipolar attachment of chromosomes is achieved.

**KNTC2 Antibody (monoclonal) (M01) - References**

1. Proinvasion metastasis drivers in early-stage melanoma are oncogenes. Scott KL, Nogueira C, Heffernan TP, van Doorn R, Dhakal S, Hanna JA, Min C, Jaskelioff M, Xiao Y, Wu CJ, Cameron LA, Perry SR, Zeid R, Feinberg T, Kim M, Vande Woude G, Granter SR, Bosenberg M, Chu GC, Depinho RA, Rimm DL, Chin L. *Cancer Cell*. 2011 Jul 12;20(1):92-103.