

## **KLF11 Antibody (monoclonal) (M01)**

Mouse monoclonal antibody raised against a partial recombinant KLF11.

Catalog # AT2628a

### **Specification**

---

#### **KLF11 Antibody (monoclonal) (M01) - Product Information**

Application	IF, WB, IHC, E
Primary Accession	<a href="#">O14901</a>
Other Accession	<a href="#">NM_003597</a>
Reactivity	Human
Host	mouse
Clonality	Monoclonal
Isotype	IgG2a Kappa
Calculated MW	55139

#### **KLF11 Antibody (monoclonal) (M01) - Additional Information**

**Gene ID** 8462

##### **Other Names**

Krueppel-like factor 11, Transforming growth factor-beta-inducible early growth response protein 2, TGFB-inducible early growth response protein 2, TIEG-2, KLF11, FKLF, TIEG2

##### **Target/Specificity**

KLF11 (NP\_003588, 404 a.a. ~ 512 a.a) partial recombinant protein with GST tag. MW of the GST tag alone is 26 KDa.

##### **Dilution**

WB~~1:500~1000

##### **Format**

Clear, colorless solution in phosphate buffered saline, pH 7.2 .

##### **Storage**

Store at -20°C or lower. Aliquot to avoid repeated freezing and thawing.

##### **Precautions**

KLF11 Antibody (monoclonal) (M01) is for research use only and not for use in diagnostic or therapeutic procedures.

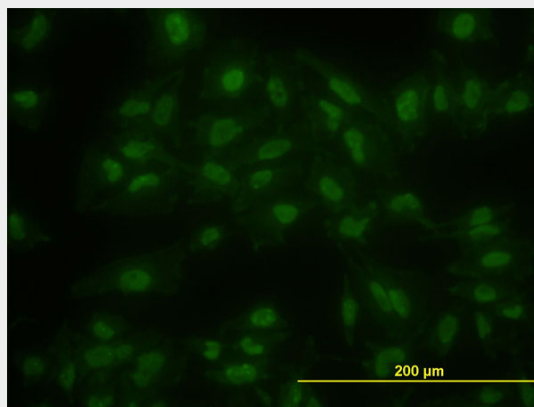
#### **KLF11 Antibody (monoclonal) (M01) - Protocols**

Provided below are standard protocols that you may find useful for product applications.

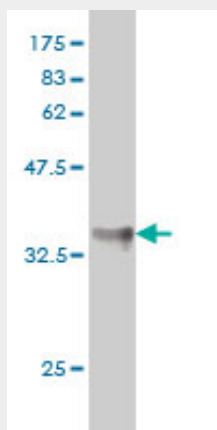
- [Western Blot](#)
- [Blocking Peptides](#)
- [Dot Blot](#)

- [Immunohistochemistry](#)
- [Immunofluorescence](#)
- [Immunoprecipitation](#)
- [Flow Cytometry](#)
- [Cell Culture](#)

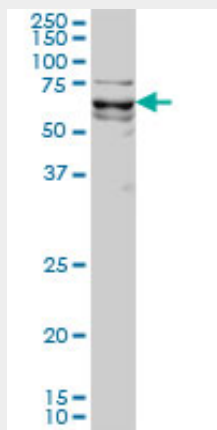
### KLF11 Antibody (monoclonal) (M01) - Images



Immunofluorescence of monoclonal antibody to KLF11 on HeLa cell. [antibody concentration 10 ug/ml]

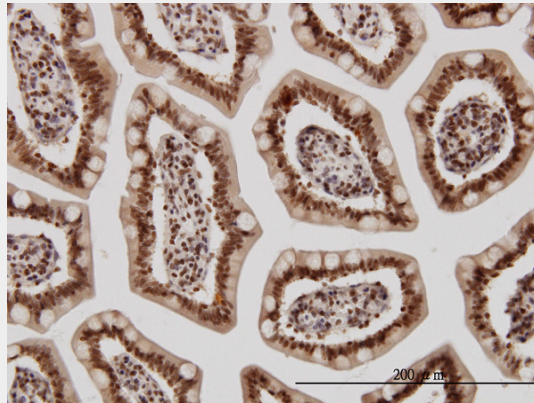


Antibody Reactive Against Recombinant Protein. Western Blot detection against Immunogen (37.73 KDa) .

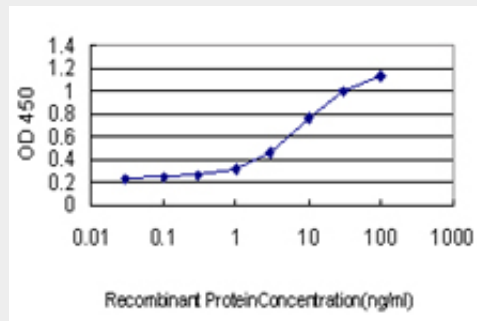


KLF11 monoclonal antibody (M01), clone 8F4 Western Blot analysis of KLF11 expression in HeLa

S3 NE ( (Cat # AT2628a )



Immunoperoxidase of monoclonal antibody to KLF11 on formalin-fixed paraffin-embedded human small Intestine. [antibody concentration 3 ug/ml]



Detection limit for recombinant GST tagged KLF11 is approximately 0.1ng/ml as a capture antibody.

**KLF11 Antibody (monoclonal) (M01) - Background**

The protein encoded by this gene is a zinc finger transcription factor that binds to SP1-like sequences in epsilon- and gamma-globin gene promoters. This binding inhibits cell growth and causes apoptosis. Defects in this gene are a cause of maturity-onset diabetes of the young type 7 (MODY7). Three transcript variants encoding two different isoforms have been found for this gene.

**KLF11 Antibody (monoclonal) (M01) - References**

1.A Novel Role of the Sp/KLF Transcription Factor KLF11 in Arresting Progression of Endometriosis. Daftary GS, Zheng Y, Tabbaa ZM, Schoolmeester JK, Gada RP, Grzenda AL, Mathison AJ, Keeney GL, Lomberk GA, Urrutia RPLoS One. 2013;8(3):e60165. doi: 10.1371/journal.pone.0060165. Epub 2013 Mar 28.