

KIAA0101 Antibody (monoclonal) (M01)

Mouse monoclonal antibody raised against a full length recombinant KIAA0101.

Catalog # AT2611a

Specification

KIAA0101 Antibody (monoclonal) (M01) - Product Information

Application	IF, WB, IHC, E
Primary Accession	Q15004
Other Accession	BC005832
Reactivity	Human
Host	mouse
Clonality	Monoclonal
Isotype	IgG1 Kappa
Calculated MW	11986

KIAA0101 Antibody (monoclonal) (M01) - Additional Information

Gene ID 9768

Other Names

PCNA-associated factor, Hepatitis C virus NS5A-transactivated protein 9, HCV NS5A-transactivated protein 9, Overexpressed in anaplastic thyroid carcinoma 1, OEATC-1, PCNA-associated factor of 15 kDa, PAF15, p15PAF, KIAA0101, NS5ATP9, PAF

Target/Specificity

KIAA0101 (AAH05832, 1 a.a. ~ 111 a.a) full-length recombinant protein with GST tag. MW of the GST tag alone is 26 kDa.

Dilution

WB~~1:500~1000

Format

Clear, colorless solution in phosphate buffered saline, pH 7.2 .

Storage

Store at -20°C or lower. Aliquot to avoid repeated freezing and thawing.

Precautions

KIAA0101 Antibody (monoclonal) (M01) is for research use only and not for use in diagnostic or therapeutic procedures.

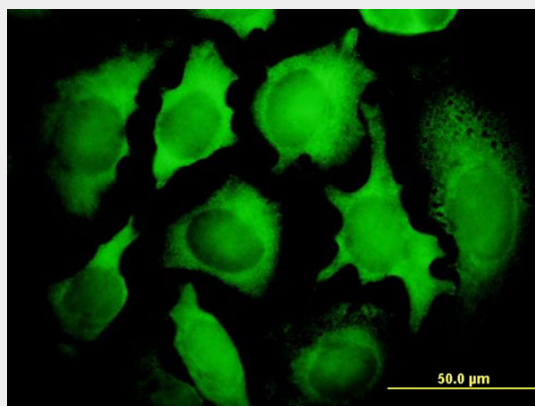
KIAA0101 Antibody (monoclonal) (M01) - Protocols

Provided below are standard protocols that you may find useful for product applications.

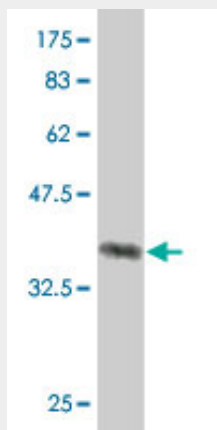
- [Western Blot](#)
- [Blocking Peptides](#)

- [Dot Blot](#)
- [Immunohistochemistry](#)
- [Immunofluorescence](#)
- [Immunoprecipitation](#)
- [Flow Cytometry](#)
- [Cell Culture](#)

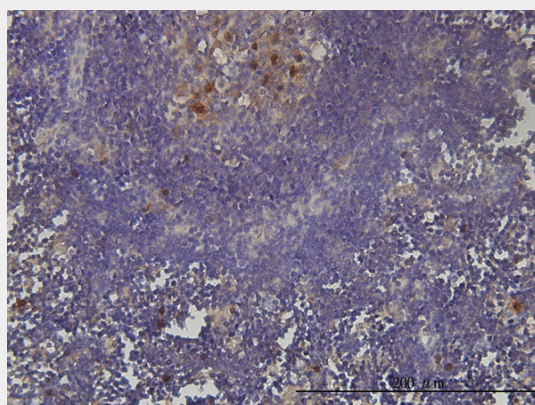
KIAA0101 Antibody (monoclonal) (M01) - Images



Immunofluorescence of monoclonal antibody to KIAA0101 on HeLa cell. [antibody concentration 10 ug/ml]

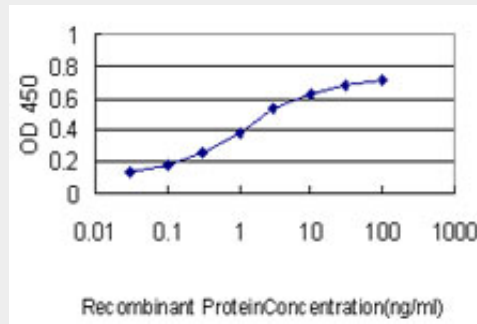


Antibody Reactive Against Recombinant Protein. Western Blot detection against Immunogen (37.95 KDa) .



Immunoperoxidase of monoclonal antibody to KIAA0101 on formalin-fixed paraffin-embedded

human lymph node tissue. [antibody concentration 3 ug/ml]



Detection limit for recombinant GST tagged KIAA0101 is approximately 0.03ng/ml as a capture antibody.

KIAA0101 Antibody (monoclonal) (M01) - References

1. p15PAF Is an Rb/E2F-Regulated S-Phase Protein Essential for DNA Synthesis and Cell Cycle Progression. Chang CN, Feng MJ, Chen YL, Yuan RH, Jeng Y. *PLoS One*. 2013 Apr 4;8(4):e61196. doi: 10.1371/journal.pone.0061196. Print 2013.

2. Elevated cyclin B2 expression in invasive breast carcinoma is associated with unfavorable clinical outcome. Shubbar E, Kovacs A, Hajizadeh S, Parris TZ, Nemes S, Gunnarsdottir K, Einbeigi Z, Karlsson P, Helou K. *BMC Cancer*. 2013 Jan 2;13:1. doi: 10.1186/1471-2407-13-1.

3. Overexpression of KIAA0101 predicts poor prognosis in primary lung cancer patients. Kato T, Daigo Y, Aragaki M, Ishikawa K, Sato M, Kaji M. *Lung Cancer*. 2011 Jun 18. [Epub ahead of print].

4. Overexpression of KIAA0101 Predicts High Stage, Early Tumor Recurrence, and Poor Prognosis of Hepatocellular Carcinoma. Yuan RH, Jeng YM, Pan HW, Hu FC, Lai PL, Lee PH, Hsu HC. *Clin Cancer Res*. 2007 Sep 15;13(18):5368-76.

KIAA0101 Antibody (monoclonal) (M01) - Citations

- [Paf15 expression correlates with rectal cancer prognosis, cell proliferation and radiation response.](#)