

K-ALPHA-1 Antibody (monoclonal) (M01)

Mouse monoclonal antibody raised against a full length recombinant TUBA1B.

Catalog # AT2589a

Specification

K-ALPHA-1 Antibody (monoclonal) (M01) - Product Information

Application	IF, WB, IHC
Primary Accession	P68363
Other Accession	BC008659
Reactivity	Human
Host	mouse
Clonality	Monoclonal
Isotype	IgG2b kappa
Calculated MW	50152

K-ALPHA-1 Antibody (monoclonal) (M01) - Additional Information

Gene ID 10376

Other Names

Tubulin alpha-1B chain, Alpha-tubulin ubiquitous, Tubulin K-alpha-1, Tubulin alpha-ubiquitous chain, TUBA1B

Target/Specificity

TUBA1B (AAH08659, 1 a.a. ~ 451 a.a) full-length recombinant protein with GST tag. MW of the GST tag alone is 26 KDa.

Dilution

WB~~1:500~1000

Format

Clear, colorless solution in phosphate buffered saline, pH 7.2 .

Storage

Store at -20°C or lower. Aliquot to avoid repeated freezing and thawing.

Precautions

K-ALPHA-1 Antibody (monoclonal) (M01) is for research use only and not for use in diagnostic or therapeutic procedures.

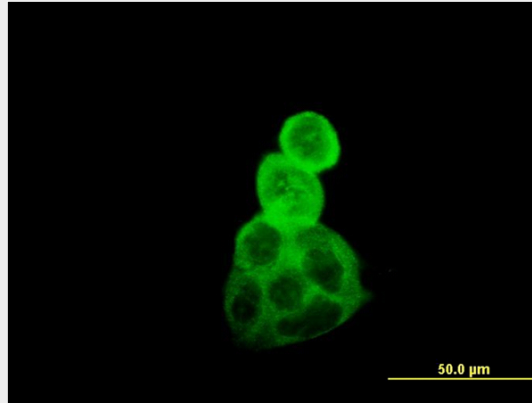
K-ALPHA-1 Antibody (monoclonal) (M01) - Protocols

Provided below are standard protocols that you may find useful for product applications.

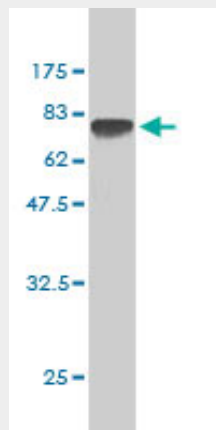
- [Western Blot](#)
- [Blocking Peptides](#)
- [Dot Blot](#)

- [Immunohistochemistry](#)
- [Immunofluorescence](#)
- [Immunoprecipitation](#)
- [Flow Cytometry](#)
- [Cell Culture](#)

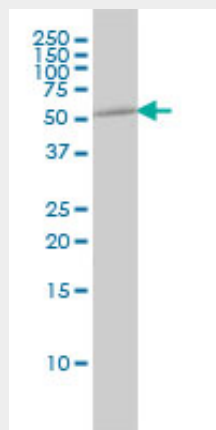
K-ALPHA-1 Antibody (monoclonal) (M01) - Images



Immunofluorescence of monoclonal antibody to TUBA1B on A-431 cell. [antibody concentration 10 ug/ml]

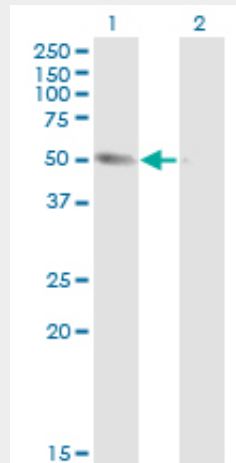


Antibody Reactive Against Recombinant Protein. Western Blot detection against Immunogen (75.35 KDa) .



TUBA1B monoclonal antibody (M01), clone 4D1 Western Blot analysis of TUBA1B expression in

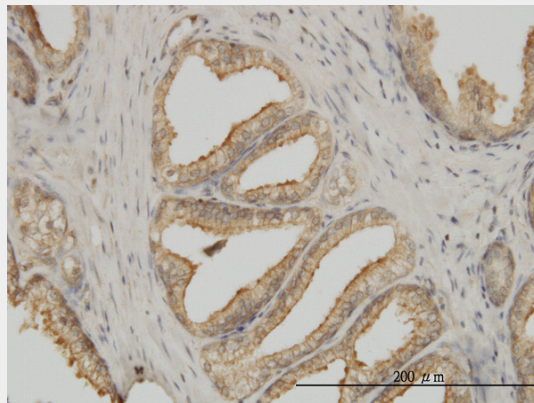
A-431 ((Cat # AT2589a)



Western Blot analysis of TUBA1B expression in transfected 293T cell line by TUBA1B monoclonal antibody (M01), clone 4D1.

Lane 1: TUBA1B transfected lysate(50.2 KDa).

Lane 2: Non-transfected lysate.



Immunoperoxidase of monoclonal antibody to TUBA1B on formalin-fixed paraffin-embedded human prostate. [antibody concentration 3 ug/ml]

K-ALPHA-1 Antibody (monoclonal) (M01) - References

1.De novo production of K- α 1 tubulin-specific antibodies: role in chronic lung allograft rejection.Goers TA, Ramachandran S, Aloush A, Trulock E, Patterson GA, Mohanakumar T.J Immunol. 2008 Apr 1;180(7):4487-94.