

**ITGA7 Antibody (monoclonal) (M01)**

Mouse monoclonal antibody raised against a partial recombinant ITGA7.

Catalog # AT2566a

**Specification**

---

**ITGA7 Antibody (monoclonal) (M01) - Product Information**

Application	WB, E
Primary Accession	<a href="#">O13683</a>
Other Accession	<a href="#">NM_002206</a>
Reactivity	Human
Host	mouse
Clonality	Monoclonal
Isotype	IgG2a Kappa
Calculated MW	128948

**ITGA7 Antibody (monoclonal) (M01) - Additional Information****Gene ID** 3679**Other Names**

Integrin alpha-7, Integrin alpha-7 heavy chain, Integrin alpha-7 light chain, Integrin alpha-7 70 kDa form, ITGA7

**Target/Specificity**

ITGA7 (NP\_002197, 478 a.a. ~ 577 a.a) partial recombinant protein with GST tag. MW of the GST tag alone is 26 kDa.

**Dilution**

WB~~1:500~1000

**Format**

Clear, colorless solution in phosphate buffered saline, pH 7.2 .

**Storage**

Store at -20°C or lower. Aliquot to avoid repeated freezing and thawing.

**Precautions**

ITGA7 Antibody (monoclonal) (M01) is for research use only and not for use in diagnostic or therapeutic procedures.

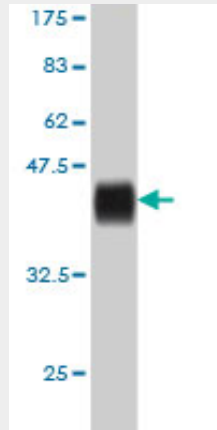
**ITGA7 Antibody (monoclonal) (M01) - Protocols**

Provided below are standard protocols that you may find useful for product applications.

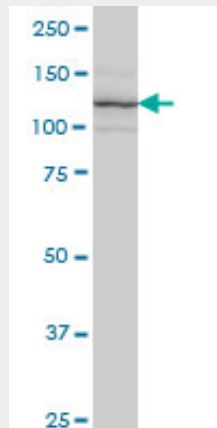
- [Western Blot](#)
- [Blocking Peptides](#)
- [Dot Blot](#)

- [Immunohistochemistry](#)
- [Immunofluorescence](#)
- [Immunoprecipitation](#)
- [Flow Cytometry](#)
- [Cell Culture](#)

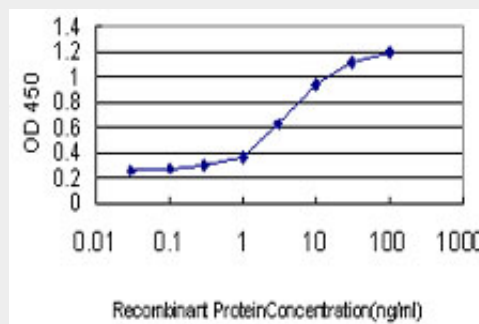
**ITGA7 Antibody (monoclonal) (M01) - Images**



Antibody Reactive Against Recombinant Protein. Western Blot detection against Immunogen (36.74 KDa) .



ITGA7 monoclonal antibody (M01), clone 8G2 Western Blot analysis of ITGA7 expression in Jurkat ( (Cat # AT2566a )



Detection limit for recombinant GST tagged ITGA7 is approximately 0.1ng/ml as a capture antibody.

**ITGA7 Antibody (monoclonal) (M01) - Background**

The protein encoded by this gene belongs to the integrin alpha chain family. Integrins are heterodimeric integral membrane proteins composed of an alpha chain and a beta chain. They mediate a wide spectrum of cell-cell and cell-matrix interactions, and thus play a role in cell migration, morphologic development, differentiation, and metastasis. This protein functions as a receptor for the basement membrane protein laminin-1. It is mainly expressed in skeletal and cardiac muscles and may be involved in differentiation and migration processes during myogenesis. Defects in this gene are associated with congenital myopathy. Alternatively spliced transcript variants encoding different isoforms have been noted for this gene.

#### **ITGA7 Antibody (monoclonal) (M01) - References**

Interaction of integrin-linked kinase and miniature chromosome maintenance 7-mediating integrin {alpha}7 induced cell growth suppression. Han YC, et al. Cancer Res, 2010 Jun 1. PMID 20460506. A Large-scale genetic association study of esophageal adenocarcinoma risk. Liu CY, et al. Carcinogenesis, 2010 Jul. PMID 20453000. Laminin-111 protein therapy prevents muscle disease in the mdx mouse model for Duchenne muscular dystrophy. Rooney JE, et al. Proc Natl Acad Sci U S A, 2009 May 12. PMID 19416897. Genetically determined proteolytic cleavage modulates alpha7beta1 integrin function. Liu J, et al. J Biol Chem, 2008 Dec 19. PMID 18940796. Toward a confocal subcellular atlas of the human proteome. Barbe L, et al. Mol Cell Proteomics, 2008 Mar. PMID 18029348.