

ITGA2 Antibody (monoclonal) (M01)
Mouse monoclonal antibody raised against a partial recombinant ITGA2.
Catalog # AT2563a

Specification

ITGA2 Antibody (monoclonal) (M01) - Product Information

Application	IF, WB, E
Primary Accession	P17301
Other Accession	NM_002203
Reactivity	Human
Host	mouse
Clonality	Monoclonal
Isotype	IgG1 Kappa
Calculated MW	129296

ITGA2 Antibody (monoclonal) (M01) - Additional Information

Gene ID 3673

Other Names

Integrin alpha-2, CD49 antigen-like family member B, Collagen receptor, Platelet membrane glycoprotein Ia, GPIa, VLA-2 subunit alpha, CD49b, ITGA2, CD49B

Target/Specificity

ITGA2 (NP_002194.2, 30 a.a. ~ 119 a.a) partial recombinant protein with GST tag. MW of the GST tag alone is 26 KDa.

Dilution

WB~~1:500~1000

Format

Clear, colorless solution in phosphate buffered saline, pH 7.2 .

Storage

Store at -20°C or lower. Aliquot to avoid repeated freezing and thawing.

Precautions

ITGA2 Antibody (monoclonal) (M01) is for research use only and not for use in diagnostic or therapeutic procedures.

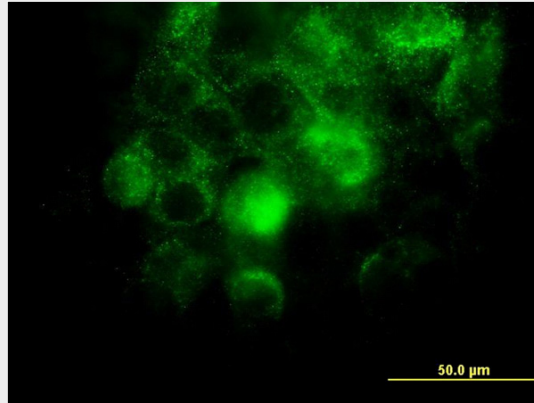
ITGA2 Antibody (monoclonal) (M01) - Protocols

Provided below are standard protocols that you may find useful for product applications.

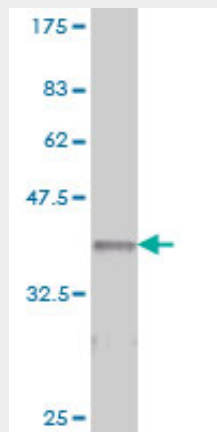
- [Western Blot](#)
- [Blocking Peptides](#)
- [Dot Blot](#)

- [Immunohistochemistry](#)
- [Immunofluorescence](#)
- [Immunoprecipitation](#)
- [Flow Cytometry](#)
- [Cell Culture](#)

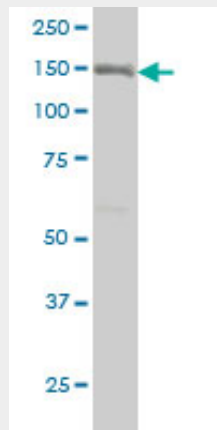
ITGA2 Antibody (monoclonal) (M01) - Images



Immunofluorescence of monoclonal antibody to ITGA2 on A-431 cell. [antibody concentration 10 ug/ml]

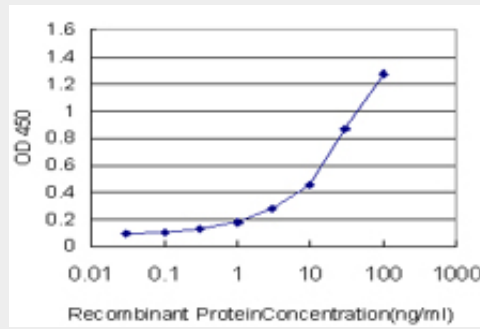


Antibody Reactive Against Recombinant Protein. Western Blot detection against Immunogen (35.53 KDa) .



ITGA2 monoclonal antibody (M01), clone 2B6 Western Blot analysis of ITGA2 expression in A-431

((Cat # AT2563a)



Detection limit for recombinant GST tagged ITGA2 is approximately 0.3ng/ml as a capture antibody.

ITGA2 Antibody (monoclonal) (M01) - Background

This gene product belongs to the integrin alpha chain family. Integrins are heterodimeric integral membrane glycoproteins composed of a distinct alpha chain and a common beta chain. They are found on a wide variety of cell types including, T cells, fibroblasts and platelets. Integrins are involved in cell adhesion and also participate in cell-surface mediated signalling.

ITGA2 Antibody (monoclonal) (M01) - References

1. Identification and Characterization of the Integrin $\alpha_2\beta_1$ Binding Motif in Chondroadherin Mediating Cell Attachment. Haglund L, Tillgren V, Addis L, Wenglen C, Recklies A, Heinegard D. *J Biol Chem.* 2011 Feb 4;286(5):3925-34. Epub 2010 Dec 2.