

ISL2 Antibody (monoclonal) (M03)

Mouse monoclonal antibody raised against a partial recombinant ISL2.

Catalog # AT2562a

Specification

ISL2 Antibody (monoclonal) (M03) - Product Information

Application	WB, E
Primary Accession	O96A47
Other Accession	NM_145805
Reactivity	Human
Host	mouse
Clonality	Monoclonal
Isotype	IgG2b Kappa
Calculated MW	39768

ISL2 Antibody (monoclonal) (M03) - Additional Information

Gene ID 64843

Other Names

Insulin gene enhancer protein ISL-2, Islet-2, ISL2

Target/Specificity

ISL2 (NP_665804.1, 261 a.a. ~ 358 a.a) partial recombinant protein with GST tag. MW of the GST tag alone is 26 KDa.

Dilution

WB~~1:500~1000

Format

Clear, colorless solution in phosphate buffered saline, pH 7.2 .

Storage

Store at -20°C or lower. Aliquot to avoid repeated freezing and thawing.

Precautions

ISL2 Antibody (monoclonal) (M03) is for research use only and not for use in diagnostic or therapeutic procedures.

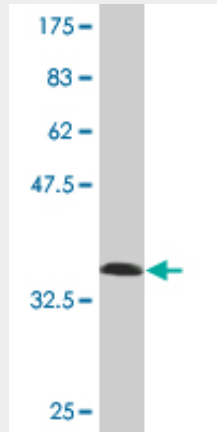
ISL2 Antibody (monoclonal) (M03) - Protocols

Provided below are standard protocols that you may find useful for product applications.

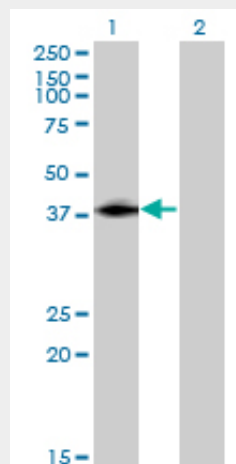
- [Western Blot](#)
- [Blocking Peptides](#)
- [Dot Blot](#)
- [Immunohistochemistry](#)

- [Immunofluorescence](#)
- [Immunoprecipitation](#)
- [Flow Cytometry](#)
- [Cell Culture](#)

ISL2 Antibody (monoclonal) (M03) - Images

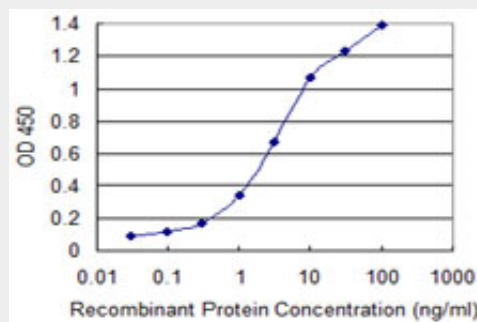


Antibody Reactive Against Recombinant Protein. Western Blot detection against Immunogen (36.52 KDa) .



Western Blot analysis of ISL2 expression in transfected 293T cell line by ISL2 monoclonal antibody (M03), clone 1D9.

Lane 1: ISL2 transfected lysate(39.8 KDa).
Lane 2: Non-transfected lysate.



Detection limit for recombinant GST tagged ISL2 is 0.03 ng/ml as a capture antibody.

ISL2 Antibody (monoclonal) (M03) - References

Cloning and expression of a novel human gene, Isl-2, encoded a LIM-homeodomain protein. Li Y, et al. Mol Biol Rep, 2007 Mar. PMID 17091338. The status, quality, and expansion of the NIH full-length cDNA project: the Mammalian Gene Collection (MGC). Gerhard DS, et al. Genome Res, 2004 Oct. PMID 15489334. Large-scale characterization of HeLa cell nuclear phosphoproteins. Beausoleil SA, et al. Proc Natl Acad Sci U S A, 2004 Aug 17. PMID 15302935. Complete sequencing and characterization of 21,243 full-length human cDNAs. Ota T, et al. Nat Genet, 2004 Jan. PMID 14702039. Generation and initial analysis of more than 15,000 full-length human and mouse cDNA sequences. Strausberg RL, et al. Proc Natl Acad Sci U S A, 2002 Dec 24. PMID 12477932.