

## **ING1 Antibody (monoclonal) (M05)**

Mouse monoclonal antibody raised against a partial recombinant ING1.

Catalog # AT2531a

### **Specification**

---

#### **ING1 Antibody (monoclonal) (M05) - Product Information**

Application	WB, E
Primary Accession	<a href="#">O9UK53</a>
Other Accession	<a href="#">NM_198219.1</a>
Reactivity	Human
Host	mouse
Clonality	Monoclonal
Isotype	IgM Kappa
Calculated MW	46738

#### **ING1 Antibody (monoclonal) (M05) - Additional Information**

**Gene ID** 3621

##### **Other Names**

Inhibitor of growth protein 1, ING1

##### **Target/Specificity**

ING1 (NP\_937862.1, 41 a.a. ~ 140 a.a) partial recombinant protein with GST tag. MW of the GST tag alone is 26 KDa.

##### **Dilution**

WB~~1:500~1000

##### **Format**

Clear, colorless solution in phosphate buffered saline, pH 7.2 .

##### **Storage**

Store at -20°C or lower. Aliquot to avoid repeated freezing and thawing.

##### **Precautions**

ING1 Antibody (monoclonal) (M05) is for research use only and not for use in diagnostic or therapeutic procedures.

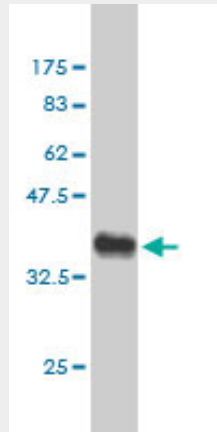
#### **ING1 Antibody (monoclonal) (M05) - Protocols**

Provided below are standard protocols that you may find useful for product applications.

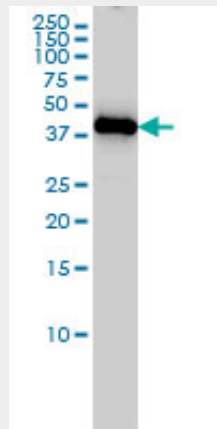
- [Western Blot](#)
- [Blocking Peptides](#)
- [Dot Blot](#)
- [Immunohistochemistry](#)

- [Immunofluorescence](#)
- [Immunoprecipitation](#)
- [Flow Cytometry](#)
- [Cell Culture](#)

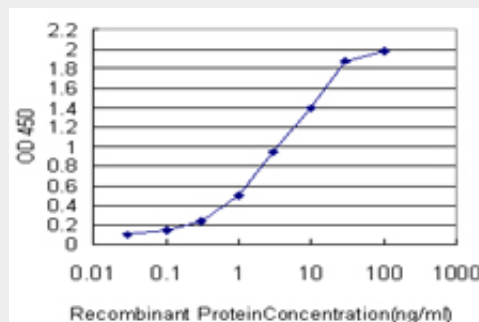
### ING1 Antibody (monoclonal) (M05) - Images



Antibody Reactive Against Recombinant Protein. Western Blot detection against Immunogen (36.74 kDa) .



ING1 monoclonal antibody (M05), clone 2F9 Western Blot analysis of ING1 expression in MCF-7 (Cat # AT2531a )



Detection limit for recombinant GST tagged ING1 is approximately 0.1ng/ml as a capture antibody.

### ING1 Antibody (monoclonal) (M05) - Background

This gene encodes a tumor suppressor protein that can induce cell growth arrest and apoptosis. The encoded protein is a nuclear protein that physically interacts with the tumor suppressor protein TP53 and is a component of the p53 signaling pathway. Reduced expression and rearrangement of this gene have been detected in various cancers. Multiple alternatively spliced transcript variants encoding distinct isoforms have been reported.

### **ING1 Antibody (monoclonal) (M05) - References**

The inhibitor of growth 1 (ING1) proteins suppress angiogenesis and differentially regulate angiopoietin expression in glioblastoma cells. Tallen G, et al. *Oncol Res*, 2009. PMID 20066899. Genetic variation in healthy oldest-old. Halaschek-Wiener J, et al. *PLoS One*, 2009 Aug 14. PMID 19680556. Nuclear exclusion of p33ING1b tumor suppressor protein: explored in HCC cells using a new highly specific antibody. Sayan B, et al. *Hybridoma (Larchmt)*, 2009 Feb. PMID 19132896. Human inhibitor of growth 1 inhibits hepatoma cell growth and influences p53 stability in a variant-dependent manner. Zhu Z, et al. *Hepatology*, 2009 Feb. PMID 19085961. Tethering by lamin A stabilizes and targets the ING1 tumour suppressor. Han X, et al. *Nat Cell Biol*, 2008 Nov. PMID 18836436.