

## IMPDH2 Antibody (monoclonal) (M01)

Mouse monoclonal antibody raised against a full length recombinant IMPDH2.

Catalog # AT2530a

### Specification

---

#### IMPDH2 Antibody (monoclonal) (M01) - Product Information

Application	IP, WB, E
Primary Accession	<a href="#">P12268</a>
Other Accession	<a href="#">BC012840</a>
Reactivity	Human
Host	mouse
Clonality	Monoclonal
Isotype	IgG1 kappa
Calculated MW	55805

#### IMPDH2 Antibody (monoclonal) (M01) - Additional Information

Gene ID 3615

##### Other Names

Inosine-5'-monophosphate dehydrogenase 2 {ECO:0000255|HAMAP-Rule:MF\_03156}, IMP dehydrogenase 2 {ECO:0000255|HAMAP-Rule:MF\_03156}, IMPD 2 {ECO:0000255|HAMAP-Rule:MF\_03156}, IMPDH 2 {ECO:0000255|HAMAP-Rule:MF\_03156}, 111205 {ECO:0000255|HAMAP-Rule:MF\_03156}, IMPDH-II, IMPDH2 {ECO:0000255|HAMAP-Rule:MF\_03156}, IMPD2

##### Target/Specificity

IMPDH2 (AAH12840, 1 a.a. ~ 514 a.a) full-length recombinant protein with GST tag. MW of the GST tag alone is 26 KDa.

##### Dilution

WB~~1:500~1000

##### Format

Clear, colorless solution in phosphate buffered saline, pH 7.2 .

##### Storage

Store at -20°C or lower. Aliquot to avoid repeated freezing and thawing.

##### Precautions

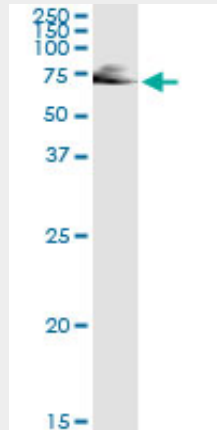
IMPDH2 Antibody (monoclonal) (M01) is for research use only and not for use in diagnostic or therapeutic procedures.

#### IMPDH2 Antibody (monoclonal) (M01) - Protocols

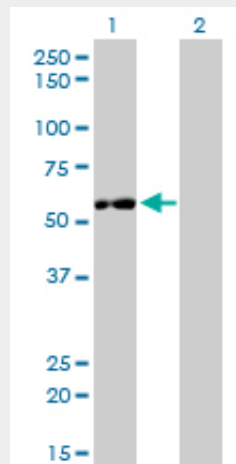
Provided below are standard protocols that you may find useful for product applications.

- [Western Blot](#)
- [Blocking Peptides](#)
- [Dot Blot](#)
- [Immunohistochemistry](#)
- [Immunofluorescence](#)
- [Immunoprecipitation](#)
- [Flow Cytometry](#)
- [Cell Culture](#)

### IMPDH2 Antibody (monoclonal) (M01) - Images



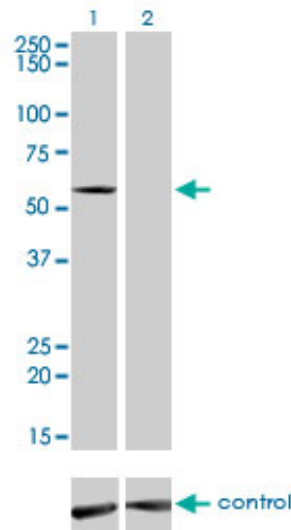
Immunoprecipitation of IMPDH2 transfected lysate using anti-IMPDH2 monoclonal antibody and Protein A Magnetic Bead ([U0007](#)), and immunoblotted with IMPDH2 MaxPab rabbit polyclonal antibody.



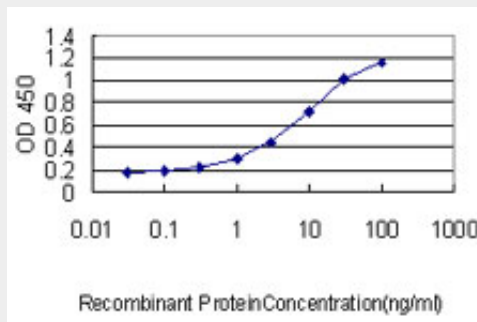
Western Blot analysis of IMPDH2 expression in transfected 293T cell line by IMPDH2 monoclonal antibody (M01), clone 1E12-B6.

Lane 1: IMPDH2 transfected lysate(55.8 KDa).

Lane 2: Non-transfected lysate.



Western blot analysis of IMPDH2 over-expressed 293 cell line, cotransfected with IMPDH2 Validated Chimera RNAi ( (Cat # AT2530a )



Detection limit for recombinant GST tagged IMPDH2 is approximately 0.3ng/ml as a capture antibody.

### IMPDH2 Antibody (monoclonal) (M01) - Background

This gene encodes the rate-limiting enzyme in the de novo guanine nucleotide biosynthesis. It is thus involved in maintaining cellular guanine deoxy- and ribonucleotide pools needed for DNA and RNA synthesis. The encoded protein catalyzes the NAD-dependent oxidation of inosine-5'-monophosphate into xanthine-5'-monophosphate, which is then converted into guanosine-5'-monophosphate. This gene is up-regulated in some neoplasms, suggesting it may play a role in malignant transformation.

### IMPDH2 Antibody (monoclonal) (M01) - References

1. Proteomic analysis of the effects of the immunomodulatory mycotoxin deoxynivalenol. da Costa AN, Mijal RS, Keen JN, Findlay JB, Wild CP. *Proteomics*. 2011 Mar 9. doi: 10.1002/pmic.201000580. [Epub ahead of print]