

## **IMPDH1 Antibody (monoclonal) (M01)**

Mouse monoclonal antibody raised against a partial recombinant IMPDH1.

Catalog # AT2529a

### **Specification**

---

#### **IMPDH1 Antibody (monoclonal) (M01) - Product Information**

Application	WB, E
Primary Accession	<a href="#">P20839</a>
Other Accession	<a href="#">NM_000883</a>
Reactivity	Human
Host	Mouse
Clonality	Monoclonal
Isotype	IgG1 Kappa
Calculated MW	55406

#### **IMPDH1 Antibody (monoclonal) (M01) - Additional Information**

**Gene ID** 3614

##### **Other Names**

Inosine-5'-monophosphate dehydrogenase 1 {ECO:0000255|HAMAP-Rule:MF\_03156}, IMP dehydrogenase 1 {ECO:0000255|HAMAP-Rule:MF\_03156}, IMPD 1 {ECO:0000255|HAMAP-Rule:MF\_03156}, IMPDH 1 {ECO:0000255|HAMAP-Rule:MF\_03156}, I11205 {ECO:0000255|HAMAP-Rule:MF\_03156}, IMPDH-I, IMPDH1 {ECO:0000255|HAMAP-Rule:MF\_03156}, IMPD1

##### **Target/Specificity**

IMPDH1 (NP\_000874, 201 a.a. ~ 300 a.a) partial recombinant protein with GST tag. MW of the GST tag alone is 26 KDa.

##### **Dilution**

WB~~1:500~1000

##### **Format**

Clear, colorless solution in phosphate buffered saline, pH 7.2 .

##### **Storage**

Store at -20°C or lower. Aliquot to avoid repeated freezing and thawing.

##### **Precautions**

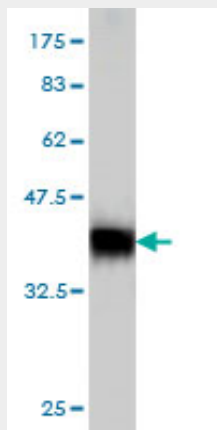
IMPDH1 Antibody (monoclonal) (M01) is for research use only and not for use in diagnostic or therapeutic procedures.

#### **IMPDH1 Antibody (monoclonal) (M01) - Protocols**

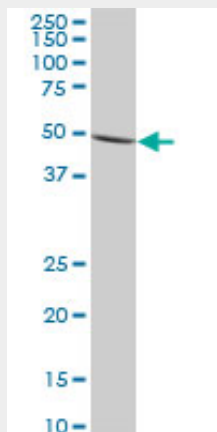
Provided below are standard protocols that you may find useful for product applications.

- [Western Blot](#)
- [Blocking Peptides](#)
- [Dot Blot](#)
- [Immunohistochemistry](#)
- [Immunofluorescence](#)
- [Immunoprecipitation](#)
- [Flow Cytometry](#)
- [Cell Culture](#)

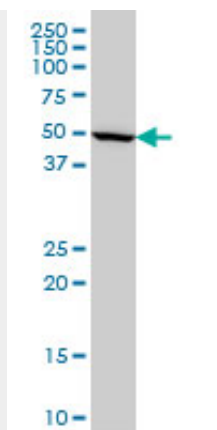
### IMPDH1 Antibody (monoclonal) (M01) - Images



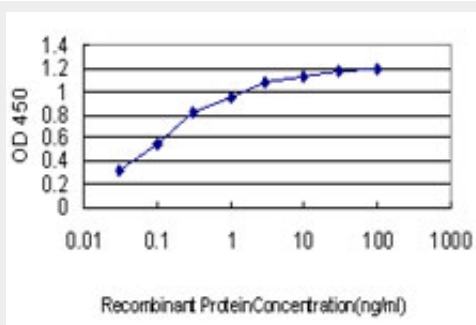
Antibody Reactive Against Recombinant Protein. Western Blot detection against Immunogen (36.74 KDa) .



IMPDH1 monoclonal antibody (M01), clone 3G6. Western Blot analysis of IMPDH1 expression in HeLa ( (Cat # AT2529a )



IMPDH1 monoclonal antibody (M01), clone 3G6 Western Blot analysis of IMPDH1 expression in HeLa S3 NE (Cat # AT2529a)



Detection limit for recombinant GST tagged IMPDH1 is approximately 0.03ng/ml as a capture antibody.

### IMPDH1 Antibody (monoclonal) (M01) - Background

The protein encoded by this gene acts as a homotetramer to regulate cell growth. The encoded protein is an enzyme that catalyzes the synthesis of xanthine monophosphate (XMP) from inosine-5'-monophosphate (IMP). This is the rate-limiting step in the de novo synthesis of guanine nucleotides. Defects in this gene are a cause of retinitis pigmentosa type 10 (RP10). Several transcript variants encoding different isoforms have been found for this gene.

### IMPDH1 Antibody (monoclonal) (M01) - References

1. Novel Direct Targets of miR-19a Identified in Breast Cancer Cells by a Quantitative Proteomic Approach. Ouchida M, Kanzaki H, Ito S, Hanafusa H, Jitsumori Y, Tamaru S, Shimizu K. *PLoS One*. 2012;7(8):e44095. Epub 2012 Aug 30.  
2. Hydroxamic acid derivatives of mycophenolic acid inhibit histone deacetylase at the cellular level. Batovska DI, Kim DH, Mitsuhashi S, Cho YS, Kwon HJ, Ubukata M. *Biosci Biotechnol Biochem*. 2008 Oct;72(10):2623-31. Epub 2008 Oct 7.