

IL20 Antibody (monoclonal) (M01)

Mouse monoclonal antibody raised against a partial recombinant IL20.

Catalog # AT2514a

Specification

IL20 Antibody (monoclonal) (M01) - Product Information

Application	IP, WB, E
Primary Accession	O9NYY1
Other Accession	NM_018724
Reactivity	Human
Host	mouse
Clonality	Monoclonal
Isotype	IgG1 Kappa
Calculated MW	20072

IL20 Antibody (monoclonal) (M01) - Additional Information**Gene ID** 50604**Other Names**

Interleukin-20, IL-20, Cytokine Zcyto10, IL20, ZCYTO10

Target/Specificity

IL20 (NP_061194, 67 a.a. ~ 176 a.a) partial recombinant protein with GST tag. MW of the GST tag alone is 26 KDa.

Dilution

WB~~1:500~1000

Format

Clear, colorless solution in phosphate buffered saline, pH 7.2 .

Storage

Store at -20°C or lower. Aliquot to avoid repeated freezing and thawing.

Precautions

IL20 Antibody (monoclonal) (M01) is for research use only and not for use in diagnostic or therapeutic procedures.

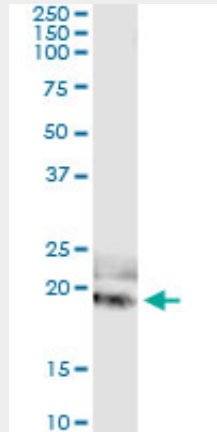
IL20 Antibody (monoclonal) (M01) - Protocols

Provided below are standard protocols that you may find useful for product applications.

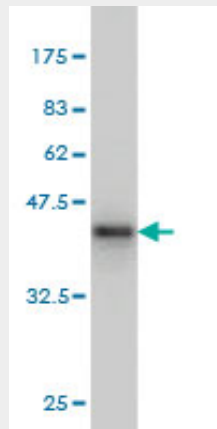
- [Western Blot](#)
- [Blocking Peptides](#)
- [Dot Blot](#)
- [Immunohistochemistry](#)

- [Immunofluorescence](#)
- [Immunoprecipitation](#)
- [Flow Cytometry](#)
- [Cell Culture](#)

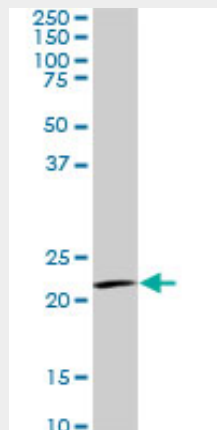
IL20 Antibody (monoclonal) (M01) - Images



Immunoprecipitation of IL20 transfected lysate using anti-IL20 monoclonal antibody and Protein A Magnetic Bead ([U0007](#)), and immunoblotted with IL20 MaxPab rabbit polyclonal antibody.

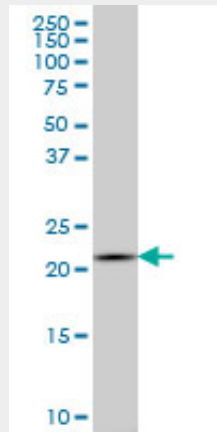


Antibody Reactive Against Recombinant Protein. Western Blot detection against Immunogen (37.84 KDa) .

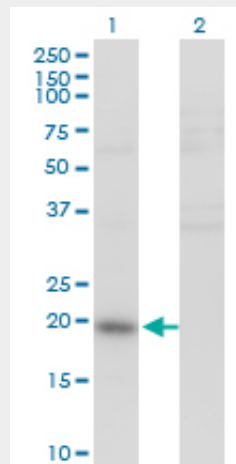


IL20 monoclonal antibody (M01), clone 2H8. Western Blot analysis of IL20 expression in A-431 (

(Cat # AT2514a)

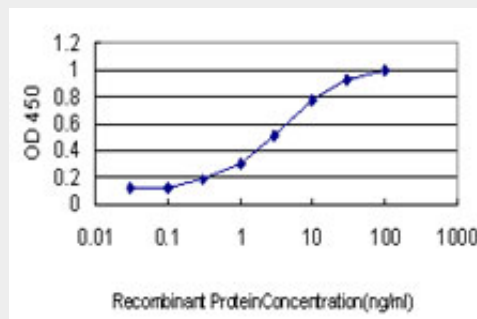


IL20 monoclonal antibody (M01), clone 2H8 Western Blot analysis of IL20 expression in K-562 (Cat # AT2514a)



Western Blot analysis of IL20 expression in transfected 293T cell line by IL20 monoclonal antibody (M01), clone 2H8.

Lane 1: IL20 transfected lysate(20.1 KDa).
 Lane 2: Non-transfected lysate.



Detection limit for recombinant GST tagged IL20 is approximately 0.3ng/ml as a capture antibody.

IL20 Antibody (monoclonal) (M01) - Background

The protein encoded by this gene is a cytokine structurally related to interleukin 10 (IL10). This

cytokine has been shown to transduce its signal through signal transducer and activator of transcription 3 (STAT3) in keratinocytes. A specific receptor for this cytokine is found to be expressed in skin and upregulated dramatically in psoriatic skin, suggesting a role for this protein in epidermal function and psoriasis.

IL20 Antibody (monoclonal) (M01) - References

Interleukin-9 polymorphism in infants with respiratory syncytial virus infection: an opposite effect in boys and girls. Schuurhof A, et al. *Pediatr Pulmonol*, 2010 Jun. PMID 20503287. New genetic associations detected in a host response study to hepatitis B vaccine. Davila S, et al. *Genes Immun*, 2010 Apr. PMID 20237496. IL-24 transgenic mice: in vivo evidence of overlapping functions for IL-20, IL-22, and IL-24 in the epidermis. He M, et al. *J Immunol*, 2010 Feb 15. PMID 20061404. The Th17 cytokine IL-22 induces IL-20 production in keratinocytes: a novel immunological cascade with potential relevance in psoriasis. Wolk K, et al. *Eur J Immunol*, 2009 Dec. PMID 19830738. Cytokine expression and signaling in drug-induced cellular senescence. Novakova Z, et al. *Oncogene*, 2010 Jan 14. PMID 19802007.