

**IL1A Antibody (monoclonal) (M01)**

Mouse monoclonal antibody raised against a partial recombinant IL1A.

Catalog # AT2508a

**Specification**

---

**IL1A Antibody (monoclonal) (M01) - Product Information**

|                   |                          |
|-------------------|--------------------------|
| Application       | WB, E                    |
| Primary Accession | <a href="#">P01583</a>   |
| Other Accession   | <a href="#">BC013142</a> |
| Reactivity        | Human                    |
| Host              | mouse                    |
| Clonality         | Monoclonal               |
| Isotype           | IgG1 Kappa               |
| Calculated MW     | 30607                    |

**IL1A Antibody (monoclonal) (M01) - Additional Information****Gene ID** 3552**Other Names**

Interleukin-1 alpha, IL-1 alpha, Hematopoietin-1, IL1A, IL1F1

**Target/Specificity**

IL1A (AAH13142, 172 a.a. ~ 271 a.a) partial recombinant protein with GST tag. MW of the GST tag alone is 26 KDa.

**Dilution**

WB~~1:500~1000

**Format**

Clear, colorless solution in phosphate buffered saline, pH 7.2 .

**Storage**

Store at -20°C or lower. Aliquot to avoid repeated freezing and thawing.

**Precautions**

IL1A Antibody (monoclonal) (M01) is for research use only and not for use in diagnostic or therapeutic procedures.

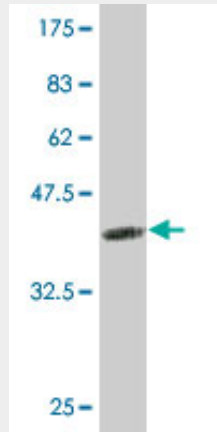
**IL1A Antibody (monoclonal) (M01) - Protocols**

Provided below are standard protocols that you may find useful for product applications.

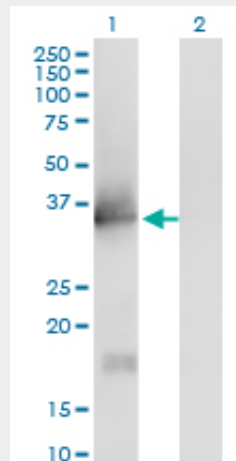
- [Western Blot](#)
- [Blocking Peptides](#)
- [Dot Blot](#)
- [Immunohistochemistry](#)

- [Immunofluorescence](#)
- [Immunoprecipitation](#)
- [Flow Cytometry](#)
- [Cell Culture](#)

**IL1A Antibody (monoclonal) (M01) - Images**

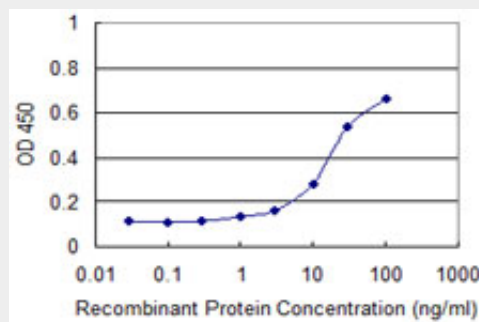


Antibody Reactive Against Recombinant Protein. Western Blot detection against Immunogen (36.63 KDa) .



Western Blot analysis of IL1A expression in transfected 293T cell line by IL1A monoclonal antibody (M01), clone 4B8.

Lane 1: IL1A transfected lysate(30.6 KDa).  
 Lane 2: Non-transfected lysate.



Detection limit for recombinant GST tagged IL1A is approximately 3ng/ml as a capture antibody.

### **IL1A Antibody (monoclonal) (M01) - Background**

The protein encoded by this gene is a member of the interleukin 1 cytokine family. This cytokine is a pleiotropic cytokine involved in various immune responses, inflammatory processes, and hematopoiesis. This cytokine is produced by monocytes and macrophages as a proprotein, which is proteolytically processed and released in response to cell injury, and thus induces apoptosis. This gene and eight other interleukin 1 family genes form a cytokine gene cluster on chromosome 2. It has been suggested that the polymorphism of these genes is associated with rheumatoid arthritis and Alzheimer's disease.

### **IL1A Antibody (monoclonal) (M01) - References**

CCL3 genotype and current depression increase risk of HIV-associated dementia. Levine AJ, et al. Neurobehav HIV Med, 2009 Nov. PMID 20725607. An approach based on a genome-wide association study reveals candidate loci for narcolepsy. Shimada M, et al. Hum Genet, 2010 Oct. PMID 20677014. A genetic association study of maternal and fetal candidate genes that predispose to preterm prelabor rupture of membranes (PROM). Romero R, et al. Am J Obstet Gynecol, 2010 Jul 29. PMID 20673868. Interleukin-1A +4845(G>T) polymorphism is a factor predisposing to acne vulgaris. Szab? K, et al. Tissue Antigens, 2010 Jul 11. PMID 20630038. Variation at the NFATC2 Locus Increases the Risk of Thiazolinedinedione-Induced Edema in the Diabetes REduction Assessment with ramipril and rosiglitazone Medication (DREAM) Study. Bailey SD, et al. Diabetes Care, 2010 Jul 13. PMID 20628086.