

IL13RA2 Antibody (monoclonal) (M01)

Mouse monoclonal antibody raised against a partial recombinant IL13RA2.

Catalog # AT2504a

Specification

IL13RA2 Antibody (monoclonal) (M01) - Product Information

Application	WB, E
Primary Accession	Q14627
Other Accession	NM_000640
Reactivity	Human
Host	mouse
Clonality	Monoclonal
Isotype	IgG2a Kappa
Calculated MW	44176

IL13RA2 Antibody (monoclonal) (M01) - Additional Information

Gene ID 3598

Other Names

Interleukin-13 receptor subunit alpha-2, IL-13 receptor subunit alpha-2, IL-13R subunit alpha-2, IL-13R-alpha-2, IL-13RA2, Interleukin-13-binding protein, CD213a2, IL13RA2, IL13R

Target/Specificity

IL13RA2 (NP_000631, 27 a.a. ~ 126 a.a) partial recombinant protein with GST tag. MW of the GST tag alone is 26 KDa.

Dilution

WB~~1:500~1000

Format

Clear, colorless solution in phosphate buffered saline, pH 7.2 .

Storage

Store at -20°C or lower. Aliquot to avoid repeated freezing and thawing.

Precautions

IL13RA2 Antibody (monoclonal) (M01) is for research use only and not for use in diagnostic or therapeutic procedures.

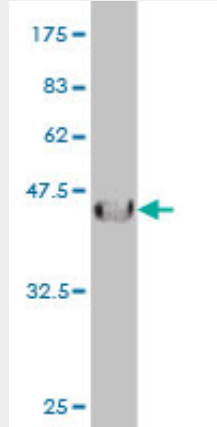
IL13RA2 Antibody (monoclonal) (M01) - Protocols

Provided below are standard protocols that you may find useful for product applications.

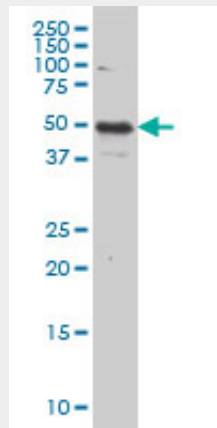
- [Western Blot](#)
- [Blocking Peptides](#)
- [Dot Blot](#)

- [Immunohistochemistry](#)
- [Immunofluorescence](#)
- [Immunoprecipitation](#)
- [Flow Cytometry](#)
- [Cell Culture](#)

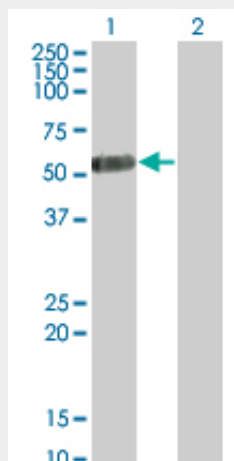
IL13RA2 Antibody (monoclonal) (M01) - Images



Antibody Reactive Against Recombinant Protein. Western Blot detection against Immunogen (36.74 KDa) .

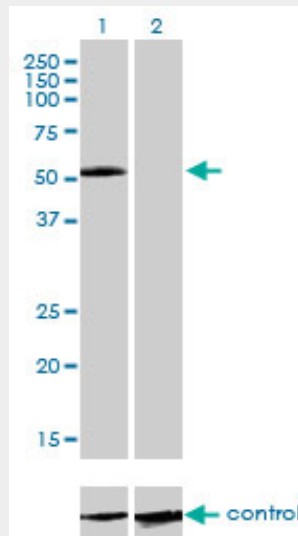


IL13RA2 monoclonal antibody (M01), clone 2E10. Western Blot analysis of IL13RA2 expression in HeLa.

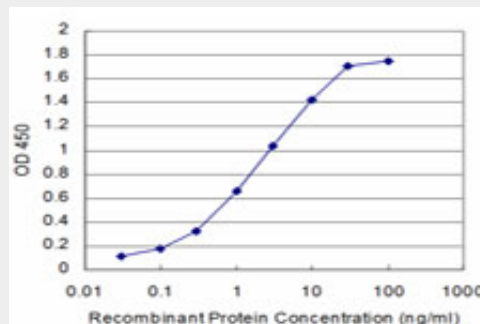


Western Blot analysis of IL13RA2 expression in transfected 293T cell line by IL13RA2 monoclonal antibody (M01), clone 2E10.

Lane 1: IL13RA2 transfected lysate(44.176 KDa).
Lane 2: Non-transfected lysate.



Western blot analysis of IL13RA2 over-expressed 293 cell line, cotransfected with IL13RA2 Validated Chimera RNAi ((Cat # AT2504a)



Detection limit for recombinant GST tagged IL13RA2 is approximately 0.1ng/ml as a capture antibody.

IL13RA2 Antibody (monoclonal) (M01) - Background

The protein encoded by this gene is closely related to IL13RA1, a subunit of the interleukin 13 receptor complex. This protein binds IL13 with high affinity, but lacks cytoplasmic domain, and does not appear to function as a signal mediator. It is reported to play a role in the internalization of IL13.

IL13RA2 Antibody (monoclonal) (M01) - References

1.Normal-appearing white matter in multiple sclerosis is in a subtle balance between inflammation and neuroprotection.Zeis T, Graumann U, Reynolds R, Schaeren-Wiemers N.Brain. 2008 Jan;131(Pt 1):288-303. Epub 2007 Dec 4.