

## **IFNA2 Antibody (monoclonal) (M38)**

Mouse monoclonal antibody raised against a partial recombinant IFNA2.

Catalog # AT2488a

### **Specification**

---

#### **IFNA2 Antibody (monoclonal) (M38) - Product Information**

Application	WB
Primary Accession	<a href="#">P01563</a>
Other Accession	<a href="#">NM_000605</a>
Reactivity	Human
Host	mouse
Clonality	Monoclonal
Isotype	IgG2b Kappa
Calculated MW	21578

#### **IFNA2 Antibody (monoclonal) (M38) - Additional Information**

**Gene ID** 3440

##### **Other Names**

Interferon alpha-2, IFN-alpha-2, Interferon alpha-A, LeIF A, IFNA2, IFNA2A, IFNA2B, IFNA2C

##### **Target/Specificity**

IFNA2 (NP\_000596, 24 a.a. ~ 188 a.a) partial recombinant protein.

##### **Dilution**

WB~~1:500~1000

##### **Format**

Clear, colorless solution in phosphate buffered saline, pH 7.2 .

##### **Storage**

Store at -20°C or lower. Aliquot to avoid repeated freezing and thawing.

##### **Precautions**

IFNA2 Antibody (monoclonal) (M38) is for research use only and not for use in diagnostic or therapeutic procedures.

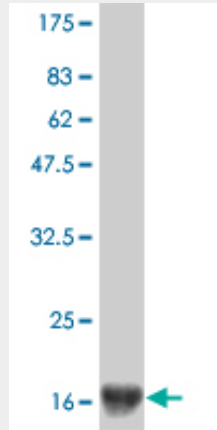
#### **IFNA2 Antibody (monoclonal) (M38) - Protocols**

Provided below are standard protocols that you may find useful for product applications.

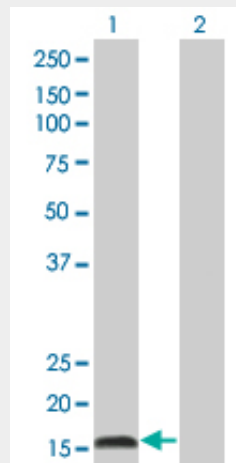
- [Western Blot](#)
- [Blocking Peptides](#)
- [Dot Blot](#)
- [Immunohistochemistry](#)
- [Immunofluorescence](#)

- [Immunoprecipitation](#)
- [Flow Cytometry](#)
- [Cell Culture](#)

### IFNA2 Antibody (monoclonal) (M38) - Images



Antibody Reactive Against Recombinant Protein. Western Blot detection against Immunogen (19.2 KDa) .



Western Blot analysis of IFNA2 expression in transfected 293T cell line by IFNA2 monoclonal antibody (M38), clone 2D10.

Lane 1: IFNA2 transfected lysate(21.6 KDa).

Lane 2: Non-transfected lysate.