

IFI35 Antibody (monoclonal) (M01)

Mouse monoclonal antibody raised against a partial recombinant IFI35.

Catalog # AT2486a

Specification

IFI35 Antibody (monoclonal) (M01) - Product Information

Application	WB, E
Primary Accession	P80217
Other Accession	NM_005533
Reactivity	Human
Host	mouse
Clonality	Monoclonal
Isotype	IgG1 Kappa
Calculated MW	31546

IFI35 Antibody (monoclonal) (M01) - Additional Information**Gene ID** 3430**Other Names**

Interferon-induced 35 kDa protein, IFP 35, Ifi-35, IFI35, IFP35

Target/Specificity

IFI35 (NP_005524, 189 a.a. ~ 288 a.a) partial recombinant protein with GST tag. MW of the GST tag alone is 26 KDa.

Dilution

WB~~1:500~1000

Format

Clear, colorless solution in phosphate buffered saline, pH 7.2 .

Storage

Store at -20°C or lower. Aliquot to avoid repeated freezing and thawing.

Precautions

IFI35 Antibody (monoclonal) (M01) is for research use only and not for use in diagnostic or therapeutic procedures.

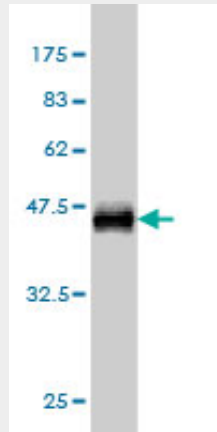
IFI35 Antibody (monoclonal) (M01) - Protocols

Provided below are standard protocols that you may find useful for product applications.

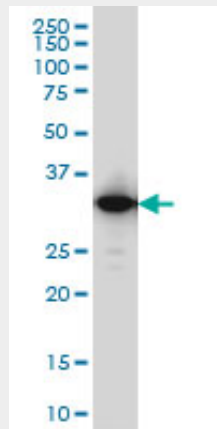
- [Western Blot](#)
- [Blocking Peptides](#)
- [Dot Blot](#)
- [Immunohistochemistry](#)

- [Immunofluorescence](#)
- [Immunoprecipitation](#)
- [Flow Cytometry](#)
- [Cell Culture](#)

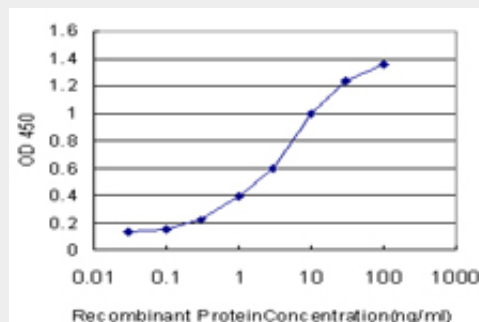
IFI35 Antibody (monoclonal) (M01) - Images



Antibody Reactive Against Recombinant Protein. Western Blot detection against Immunogen (36.74 KDa) .



IFI35 monoclonal antibody (M01), clone 3H6 Western Blot analysis of IFI35 expression in A-431 (Cat # AT2486a)



Detection limit for recombinant GST tagged IFI35 is approximately 0.1ng/ml as a capture antibody.

IFI35 Antibody (monoclonal) (M01) - References

1. Identification of Interferon- α induced genes associated with antiviral activity in Daudi cells, and characterization of IFIT3 as a novel antiviral gene. Schmeisser H, Mejido J, Balinsky CA, Morrow AN, Clark CR, Zhao T, Zoon KC. *J Virol*. 2010 Aug 4. [Epub ahead of print]